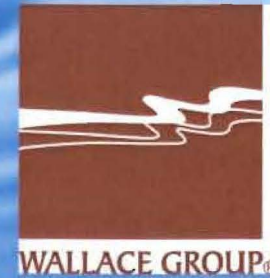




OCSD Water Supply Issues Northern Cities Groundwater Basin

October 28, 2009





Water Supply

- Existing Supply Summary:
 - GW, 900 AF
 - Lopez, 303 AF
 - State Water, 750 AF
 - Total: 1,953 AF
- Future Demand: 1,419 AFY (73%)
- Existing Demand: 910 AFY (47%)
- Buffer 534 AFY



Water Supply Reliability

- GW and Lopez Full Allocations
- State Water (750 AFY)
 - Drought Cycles
 - Environmental Factors (Bay-Delta Smelt)
 - Reliability (40% of allocation) ~300 AFY
- Current Adjusted Supply: 1,503 AFY
- Future Demand: 1,419 AFY
- Buffer w/40% SW: 84 AFY



Water Supply Recommendations From Draft WMP

- State Water Drought Buffer
- Continued Conservation Efforts
- Reduce Unaccounted-for Water
- Future Water Recycling Opportunities

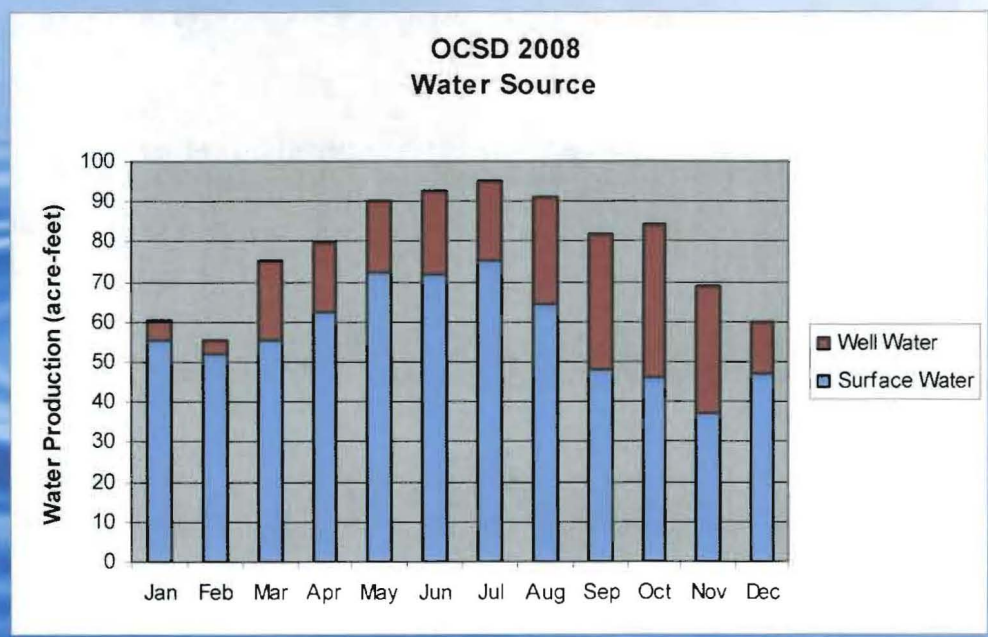


2008 Water Use Summary

- State Water – 377 AF
- Lopez Water – 278 AF
- GW – 247 AF
- Total – 902 AF

Surface Water – 73%

Groundwater – 27%





Cost of Water Supplies

- **State Water**
 - \$1,100/AF
 - Includes Wheeling Cost
- **State Water Drought Buffer**
 - \$75/AF
- **Lopez Water**
 - \$1,391/AF
- **Groundwater**
 - ~\$300/AF



**Total cost for 2008 is
approximately \$814,500
or \$900/AF for all sources
combined (902 AF)**



Oceano Community Services District

Oceano Production and Monitoring Wells



Wells No. 7 and 8



**Oceano Production Wells
Closest to Ocean—well
depth and WL above MSL**

Well No. 7 162' (0.5')

Well No. 8 525' (3.8')

Oceano Monitoring Wells Depot Parking Lot



Oceano monitoring wells

Green, Blue, Yellow and Silver





Oceano Monitoring Wells

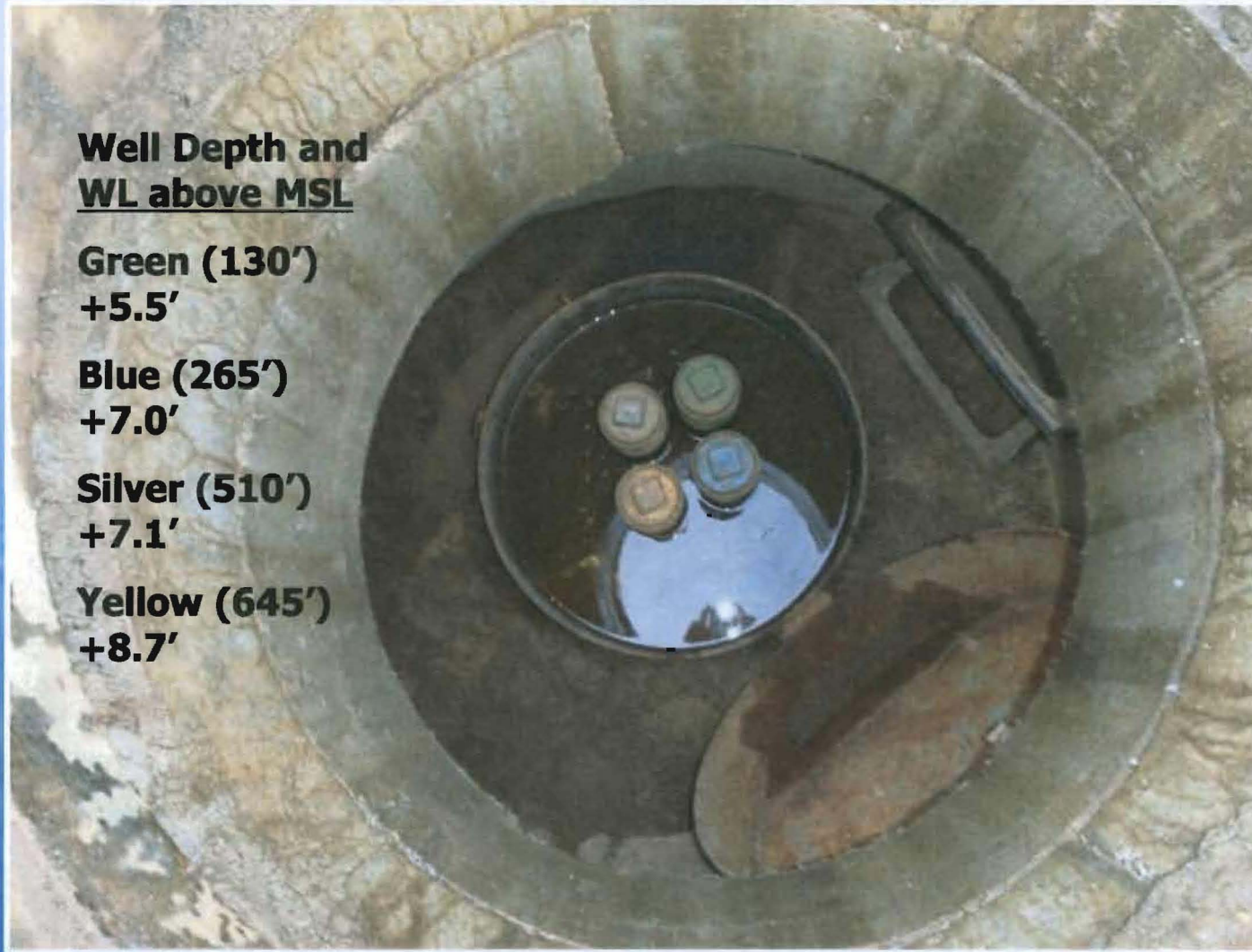
Well Depth and WL above MSL

**Green (130')
+5.5'**

**Blue (265')
+7.0'**

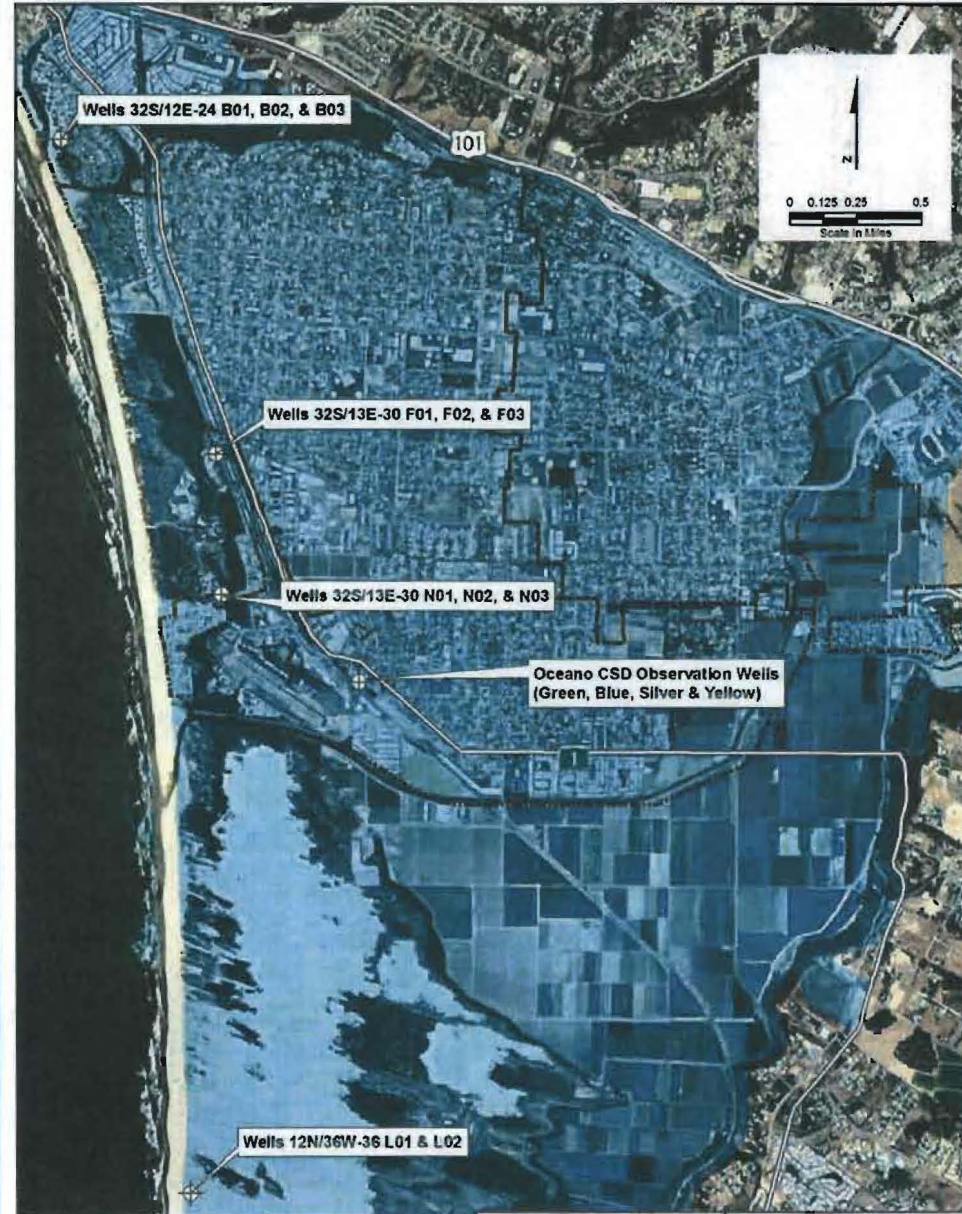
**Silver (510')
+7.1'**

**Yellow (645')
+8.7'**



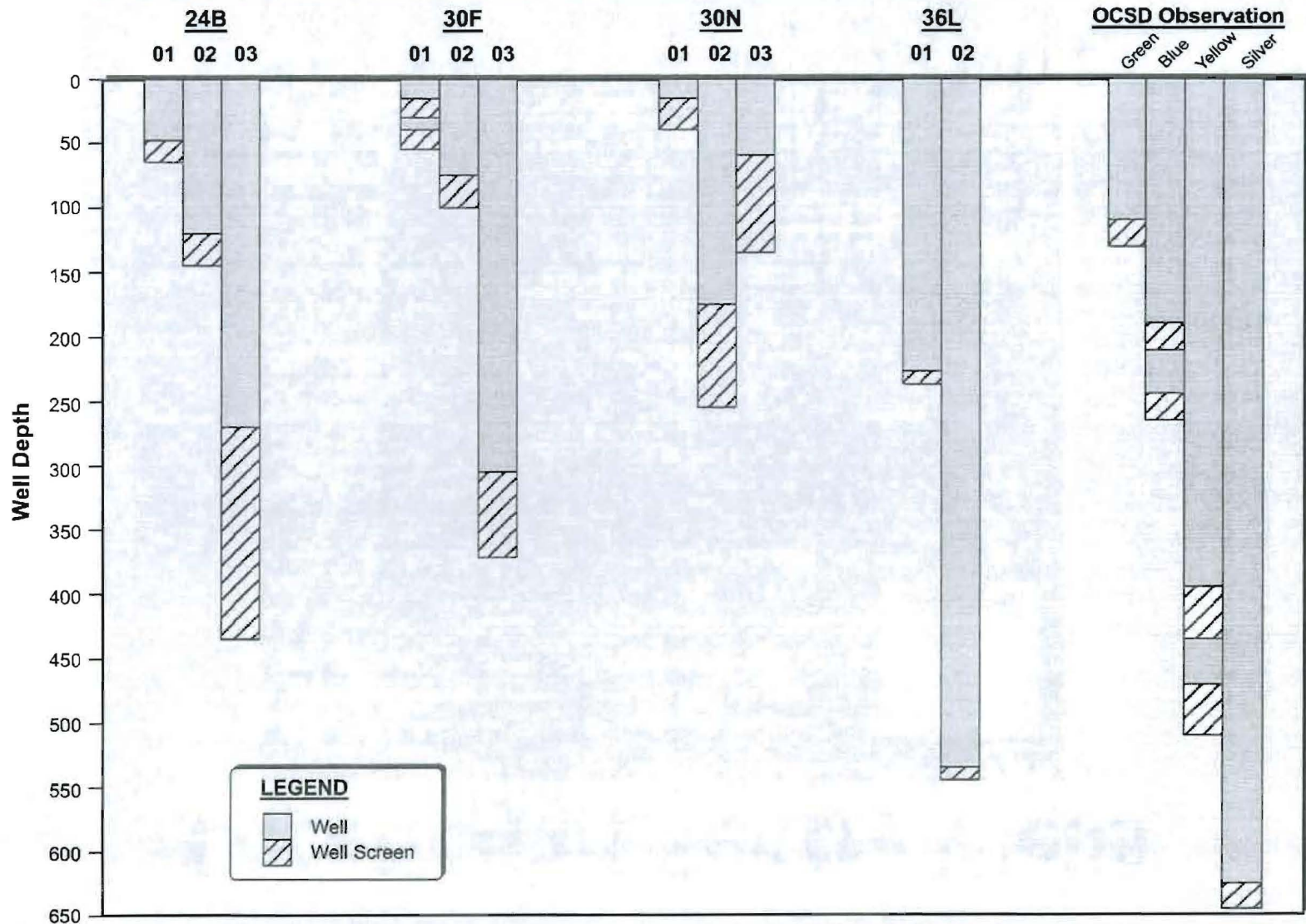


Location of Sentry Wells





Depth of Sentry Wells





Sentry Wells N01, 2, and 3





Monitoring Casings





Access Port





Sentry Wells F01, 2 and 3



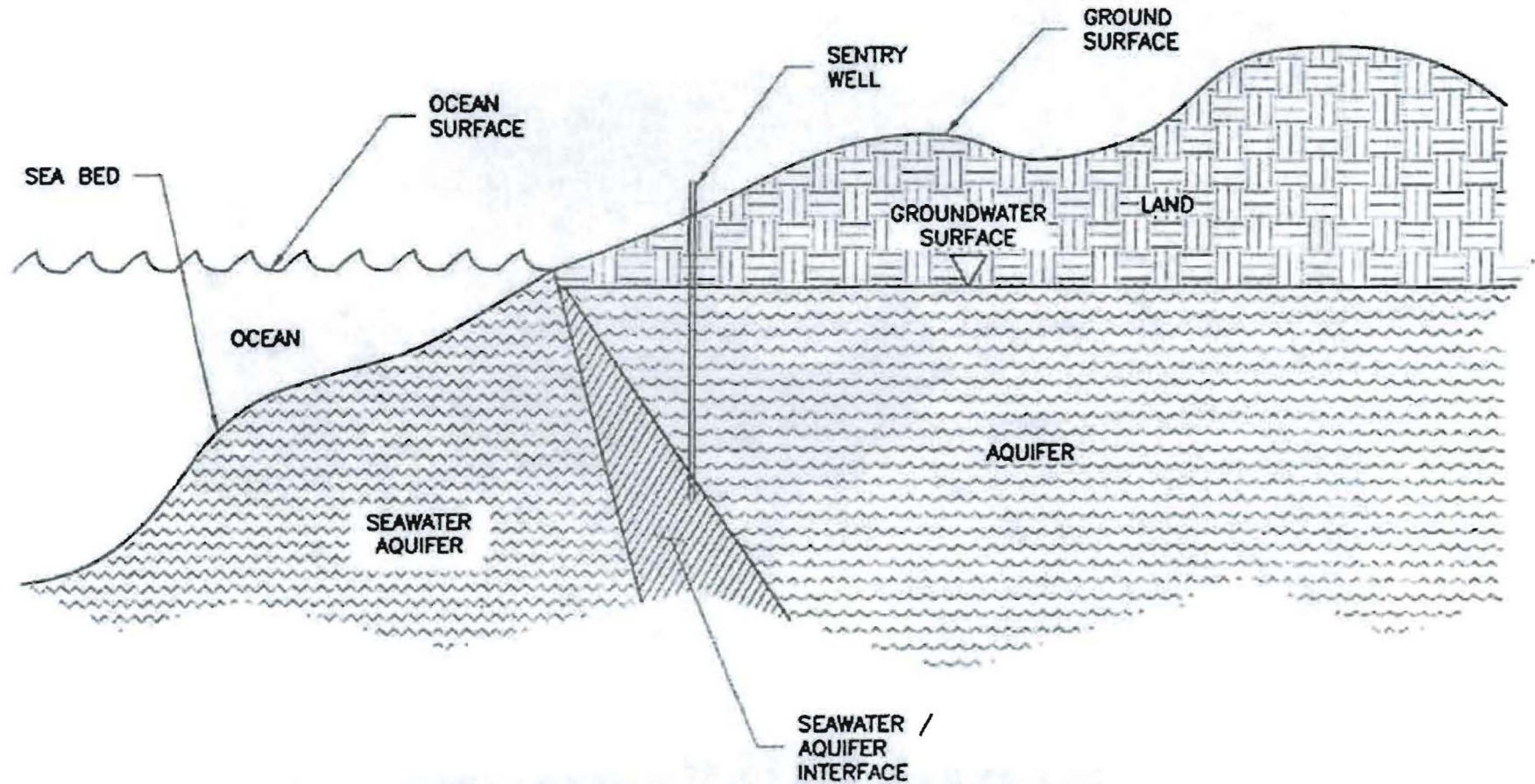


Monitoring Ports



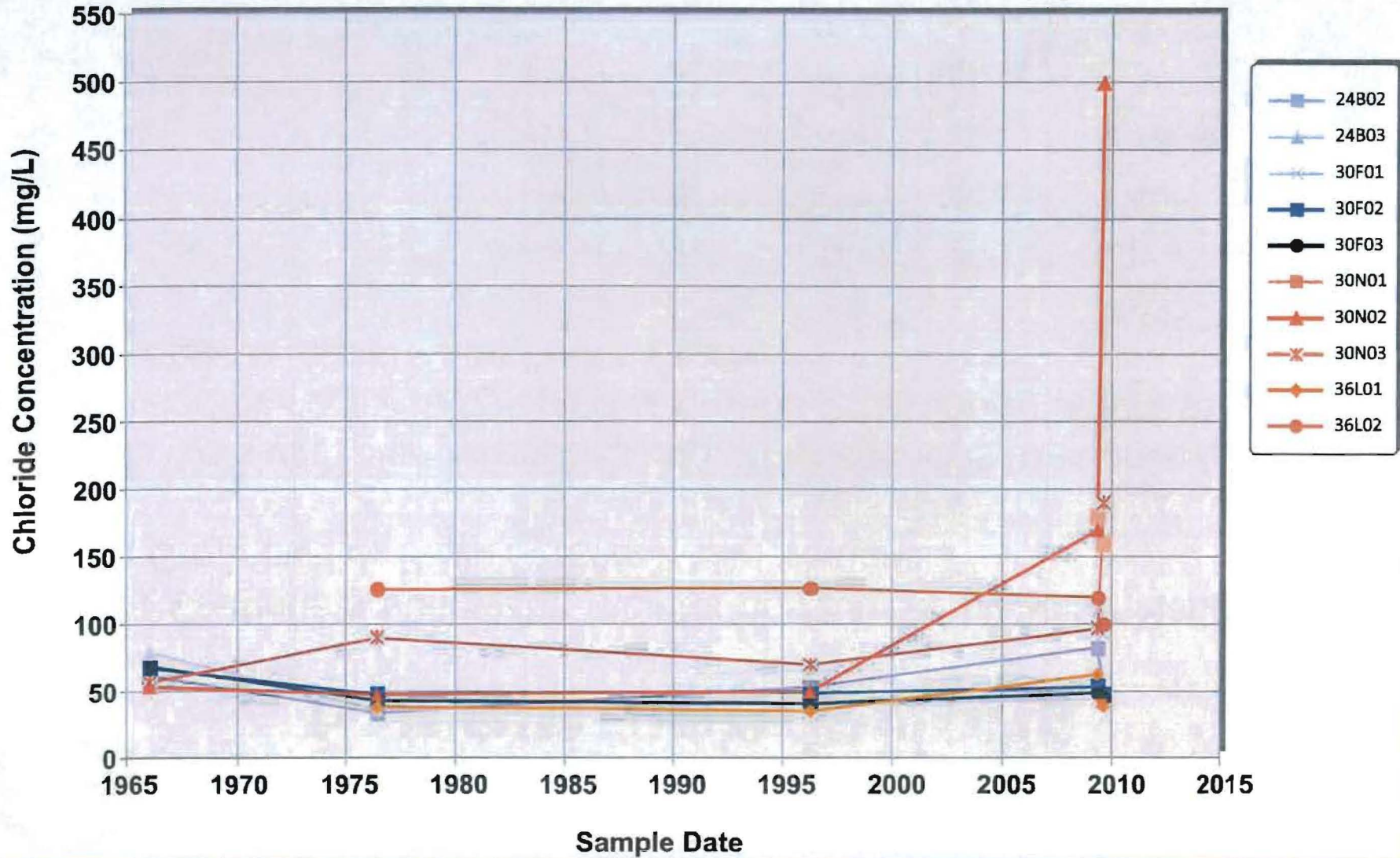


Seawater Intrusion Wedge





Chloride Concentrations





Recommendations

1. Continue groundwater monitoring required by Santa Maria Groundwater Basin Settlement Agreement
2. Work with Northern Cities and other agencies to augment, and/or decrease pumping of groundwater and to purchase state water drought buffer water
3. Continue to explore recycled water options and investigation of a seawater intrusion barrier project
4. Return to Board with more detail on cost sharing and alternatives