

TO: COMMITTEE MEMBERS
FROM: BRUCE BUEL
DATE: FEB. 22, 2008

AGENDA ITEM
2
FEB. 25, 2008

REVIEW WIP PROJECT DEVELOPMENT STATUS

ITEM

Review WIP Project Development Status [Forward Recommendations to Board].

BACKGROUND

Boyle Engineering is scheduled to summarize their research to date. Attached is a Preliminary WIP Hydraulic Profile illustrating the elevation and head relationships of Santa Maria's water system and NCSD's water system.

Staff is scheduled to summarize recent discussions with the City of Santa Maria regarding revisions to the MOU and the preliminary Environmental Documentation being prepared by Padre Associates.

Your Honorable Board, on January 9, 2008, increased Boyle's NTE expenditure limit to \$356,416 – providing for the funding to revise the WIP Preliminary Engineering Memorandum. During January Boyle spent \$11,978.55 (see attached invoice); increasing their project billing from \$229,757 to \$241,735.55.

RECOMMENDATION

Staff recommends that the Committee receive the Boyle and staff updates and ask questions.

ATTACHMENTS

- WIP Hydraulic Profile
- January Boyle Invoice

T:\BOARD MATTERS\BOARD MEETINGS\BOARD LETTER\BOARD LETTER 2008\SWP COMMITTEE\08025ITEM2.DOC

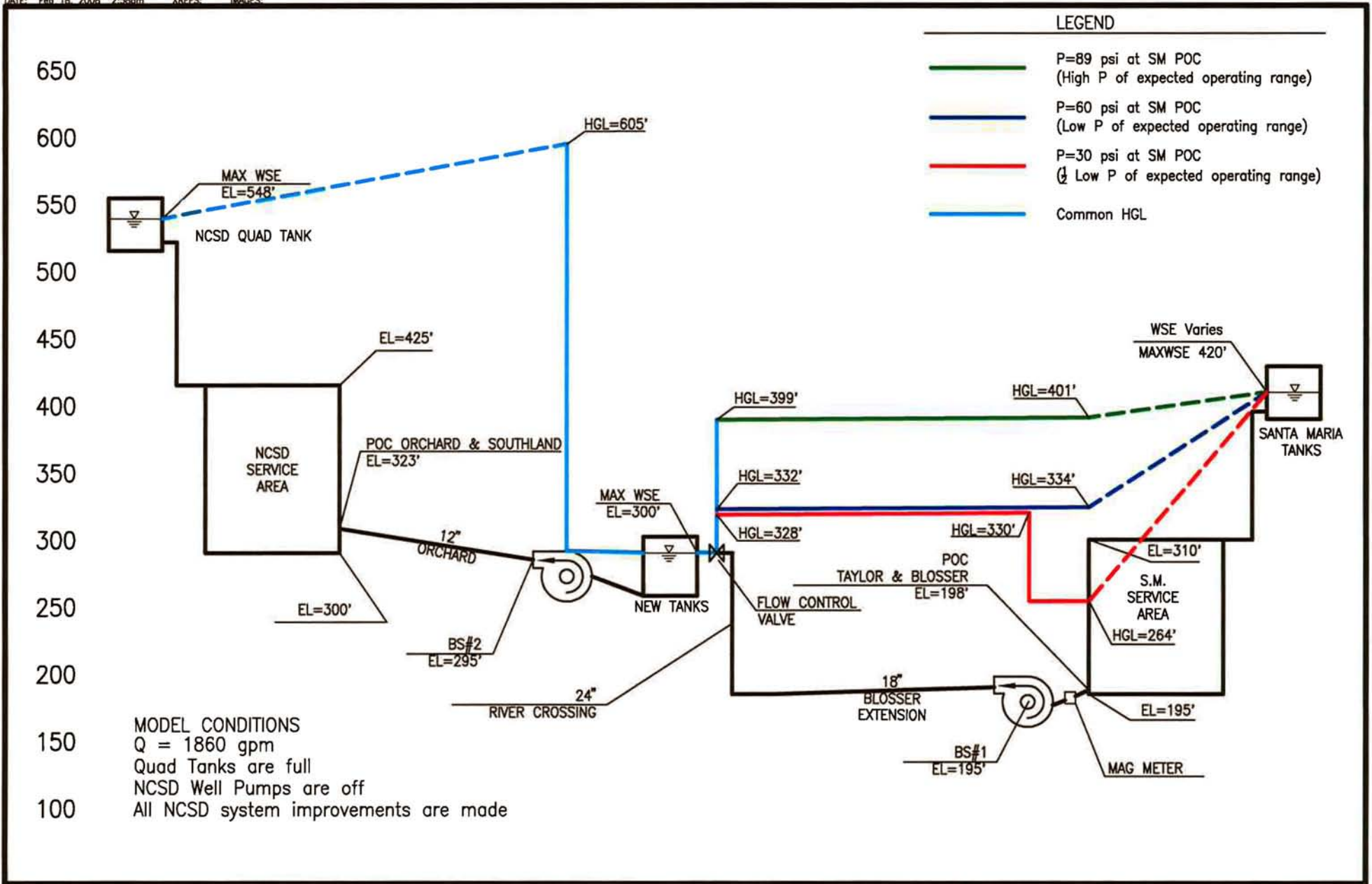


FIGURE 3-1	NCSO WATERLINE INTERTIE	BEC PROJECT NO. 19996.12	 1194 Pacific St., Suite 204 San Luis Obispo, CA. 93401 Tel. 805-542-9840 Fax 805-542-9990 WWW.BOYLEENGINEERING.COM
	HYDRAULIC PROFILE ALTERNATIVE 2		

60 Years of Engineering Excellence
1194 Pacific Street, Suite 204
San Luis Obispo CA 93401
Phone: 805-542-9840
Fax: 805-542-9990



Nipomo Community Services District
148 South Wilson Street
P.O. Box 326
Nipomo, CA 93444

February 5, 2008
Project No: 19996.12
Invoice No: 052592

Nipomo Waterline Intertie Project
Professional Services from January 1, 2008 to February 1, 2008

Professional Personnel

	Hours	Rate	Amount	
Principal	8.50	185.00	1,572.50	
Senior Engineer I	26.25	135.00	3,543.75	
Assistant I	59.75	100.00	5,975.00	
Totals	94.50		11,091.25	
Total Labor				11,091.25

General Project Expenses

General Project Expenses	8.00% of 11,091.25	887.30	
Total General Project Expenses		887.30	887.30

Total this Invoice \$11,978.55

	Current	Prior	Total	Received	A/R Balance
Billings to Date	11,978.55	229,757.00	241,735.55	229,757.00	11,978.55

TO: COMMITTEE MEMBERS
FROM: BRUCE BUEL
DATE: FEB. 22, 2008

AGENDA ITEM

3

FEB. 25, 2008

REVIEW WIP PROJECT NETWORK ANALYSIS

ITEM

Review WIP Project Network Analysis [Forward Recommendations to Board].

BACKGROUND

Attached is a draft schedule for WIP development prepared by Boyle Engineering, which includes the WIP Revival Steps previously reviewed by the committee. Boyle Engineering is scheduled to summarize this draft to the Committee.

RECOMMENDATION

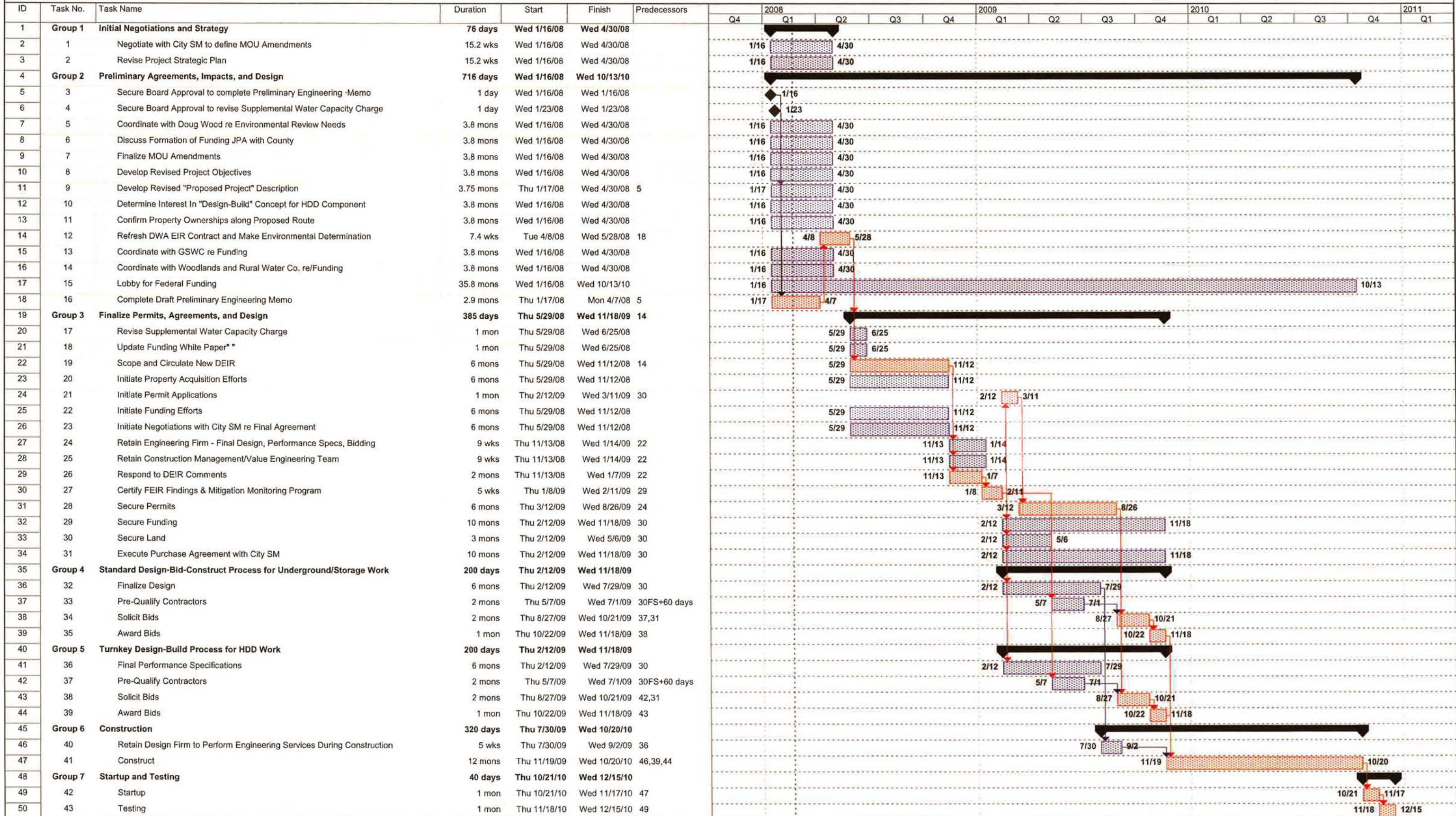
Staff recommends that the Committee receive the Boyle's presentation and develop recommendations for the Board.

ATTACHMENTS

- Draft WIP Schedule

T:\BOARD MATTERS\BOARD MEETINGS\BOARD LETTER\BOARD LETTER 2008\SWP COMMITTEE\08025\ITEM3.DOC

Waterline Intertie Project - Revival Steps



Project: WIP Revival Steps Schedule
Date: Thu 2/21/08

Task		Progress		Summary		Rolled Up Critical Task		Rolled Up Progress		External Tasks		Group By Summary	
Critical Task		Milestone		Rolled Up Task		Rolled Up Milestone		Split		Project Summary		Deadline	

TO: COMMITTEE MEMBERS
FROM: BRUCE BUEL
DATE: FEB. 22, 2008

AGENDA ITEM

4

FEB. 25, 2008

REVIEW WIP PROJECT OBJECTIVES

ITEM

Review WIP Project Objectives [Forward Recommendations to Board].

BACKGROUND

Attached is the set of objectives adopted by the Board in 2006 and included in the Draft EIR.

RECOMMENDATION

Staff recommends that the Committee discuss the Objectives and identify edits to forward to the Board.

ATTACHMENTS

- Previously Adopted Objectives

T:\BOARD MATTERS\BOARD MEETINGS\BOARD LETTER\BOARD LETTER 2008\SWP COMMITTEE\08025\ITEM4.DOC

B. PROJECT OBJECTIVES

The basic objective of the proposed Nipomo Community Services District Waterline Intertie is to construct a pipeline connection from the City of Santa Maria water distribution system across the Santa Maria River to the existing water distribution system within the Nipomo Community Services District. In so doing, the proposed project will also achieve the following objectives:

1. Avoid further depletion of the Nipomo Mesa Management Area (NMMA) of the Santa Maria Groundwater Basin and prevent sea water intrusion by providing supplemental water consistent with proposed settlement agreements related to the groundwater adjudication.
2. Comply with the 2005 groundwater adjudication settlement stipulation that recognizes the need for active management of the NMMA.
3. Assist in balancing groundwater levels in the NMMA by reducing pumping in the NMMA.
4. Augment current water supplies available to the Nipomo Community Services District (District) by 2,000 acre-feet per year (afy).
5. Augment current water supplies available to the Woodlands and other water purveyors on the Mesa (Golden State Water Company and Rural Water Company) by 1,000 acre-feet per year.
6. Increase the reliability of District water supply by providing a diversity of water sources. Avoid the potential use of supplemental water return flows from the District, the Woodlands and other water purveyors being used to support the water requirements of new development.
7. Comply with Local Agency Formation Commission (LAFCO) requirements for securing supplemental water prior to annexation of lands now within the District's Sphere of Influence. This supplemental water for annexations shall be in addition to the initial 3,000 acre-feet per year.
8. Avoid multiple waterline crossings of the Santa Maria River and associated environmental impacts by constructing a single pipeline that would be capable of transporting sufficient water for potential NMMA growth consistent with the South County Area Plan (Inland) of San Luis Obispo County's General Plan.
9. Avoid depletion of the NMMA by:
 - A. Providing supplemental water for new development within the current service area of the District and the Mesa's other water purveyors (Golden State Water Company and Rural Water Company) consistent with the South County Area Plan (Inland);

- B. Facilitating supplemental water delivery for new development within the District's Sphere of Influence consistent with the South County Area Plan (Inland) and the conditions in LAFCO's 2004 Sphere of Influence Update.
- C. Providing the basis for the assessment of impact fees upon development outside the District's Sphere of Influence and the services areas of the Mesa's other water purveyors (Golden State Water Company and Rural Water Company).

These project objectives play an important role in this EIR in that these objectives provide the basis for judging the merits of the proposed project. These objectives also assist in the evaluation (and possible adoption or rejection) of alternatives to the proposed project.

TO: COMMITTEE MEMBERS
FROM: BRUCE BUEL
DATE: FEB. 22, 2008



RECEIVE BEACH WELL PRESENTATION

ITEM

Receive presentation from Boyle/Fugro re Beach Well Technology [Forward Recommendations to Board].

BACKGROUND

Boyle and Fugro have volunteered to provide information on the technologies available to collect source water at the coast and to dispose of brine subsurface at the coast.

RECOMMENDATION

Staff recommends that the Committee receive the presentation and ask questions.

ATTACHMENTS

- None

T:\BOARD MATTERS\BOARD MEETINGS\BOARD LETTER\BOARD LETTER 2008\SWP COMMITTEE\08025\ITEM5.DOC