

TO: LISA BOGNUDA ^{LSB}
ACTING GENERAL MANAGER

FROM: PETER SEVCIK
DISTRICT ENGINEER

DATE: DECEMBER 9, 2010



SOUTHLAND WWTF UPGRADE PROJECT UPDATE

ITEM

Mike Nunley of AECOM Engineering re Southland WWTF Upgrade project status [NO ACTION REQUESTED].

BACKGROUND

Mike Nunley is scheduled to summarize the attached report.

RECOMMENDATION

Staff recommends that your Honorable Board receive the presentation and ask questions as appropriate.

ATTACHMENTS

- December 2010 Southland WWTF Upgrade Design Phase Status Report

Memorandum

To	Peter Sevcik, PE, District Engineer - NCSD	Page	1
CC	Jon Hanlon, Eileen Shields		
Subject	Southland WWTF Phase 1 Improvements – Design Phase Status Report		
From	Michael K. Nunley, PE		
Date	December 8, 2010		

The Project Team has completed the following items this month:

1. AECOM received comments from District staff and the District's peer review team on the Draft Concept Design Report.
2. AECOM has been working to integrate these comments and finalize the Concept Design Report, which is scheduled to be submitted on December 15th.

Schedule

The Project Schedule is attached. A baseline was set at the August 4, 2010 based on the District's request. The schedule has been updated to reflect the current project status.

Budget Status

The Invoice Summary is attached. The Invoice Summary indicates an amount invoiced which is consistent with the work completed to date. The project budget is attached. The next project cost opinion update will occur with acceptance of the final Concept Design Report, after the District has reviewed and commented on the draft Concept Design Report.

Yours Sincerely,

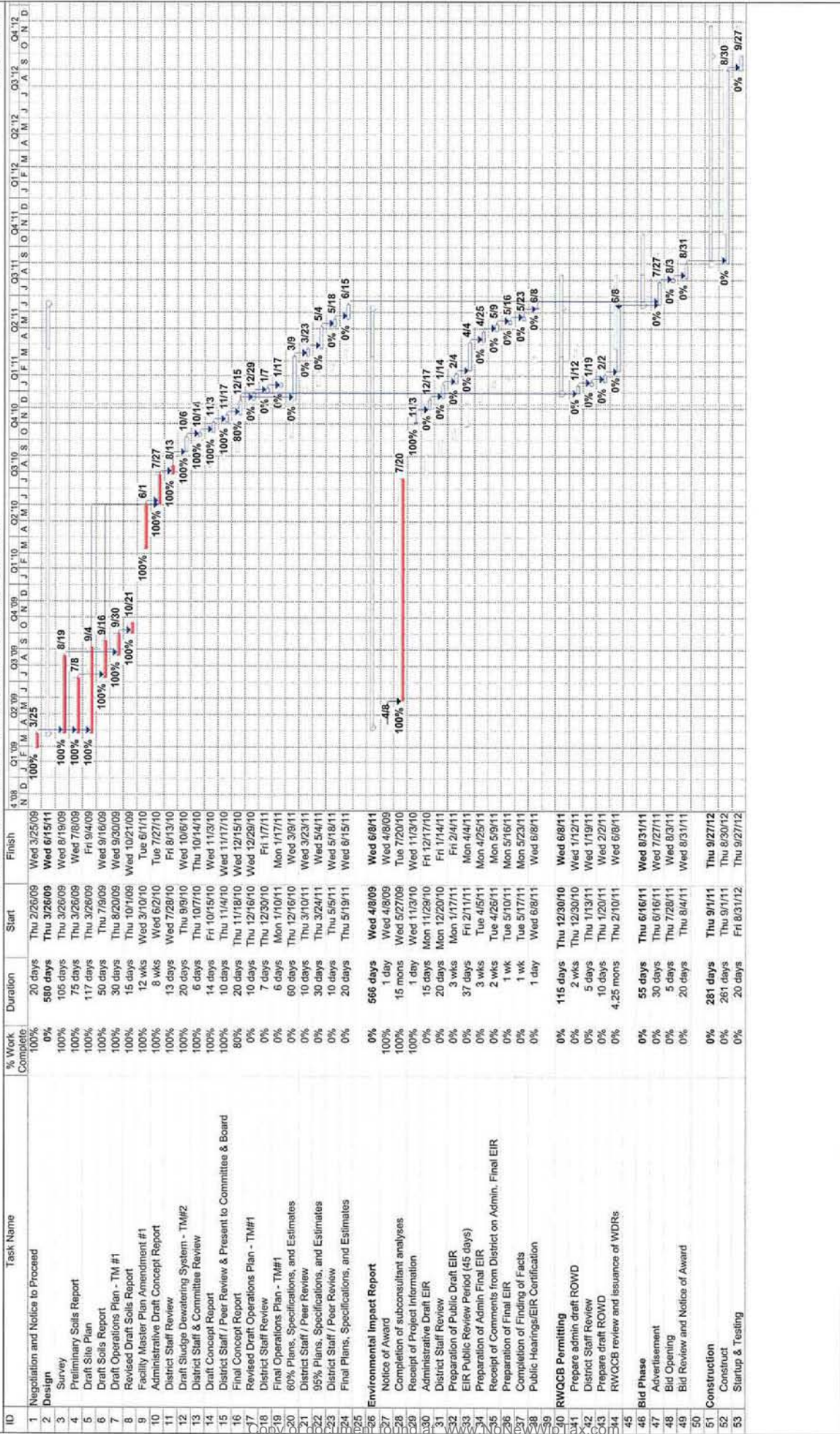


Michael K. Nunley, PE

Enclosures: Project Schedule
Invoice Summary
Project Budget Summary

Southland WWTF Phase 1 Improvements Design Schedule

Wed 12/8/10



Project: Southland Design 4.03.09
Date: Wed 12/8/10

Task: Progress

Milestone: Summary

Roll Up Baseline Milestone

Roll Up Critical Task

Roll Up Milestone

Roll Up Baseline

External Tasks

Group By Summary

Baseline

Page 1

Project Budget Summary

11/26/2010

Engineering Services for NCSD - Southland WWTF Upgrade

Nipomo CSD

	Total Budget	Amount Previously Invoiced	Current Invoice Amount	% of Budget Earned to date	% of Work Complete
Task Group 1 - Concept Design Phase	\$242,179.00	\$223,644.37	\$5,686.20	95%	95%
Task Group 2 - Construction Documents	\$566,856.00	\$22,814.73	\$216.00	4%	4%
Task Group 3 - Project Management	\$97,796.00	\$54,234.90	\$4,704.75	60%	60%
Task Group 4 - Assistance During Bid	\$39,539.00	\$0.00	\$0.00	0%	0%
Task Group 5 - Office Engineering Services	\$147,198.00	\$0.00	\$0.00	0%	0%
Task Group 6 - Amendment 1 Facility MP	\$37,020.00	\$37,020.00	\$0.00	100%	100%
Task Group 7 - Waste Discharge Report	\$30,130.00	\$0.00	\$0.00	0%	0%
Total	\$1,160,718.00	\$337,714.00	\$10,606.95	30%	30%

Date Printed 12/7/2010

Item	Description	Budgeted Amount		Updated Amount	
		Jan 2009 Master Plan	(1)(2)(3)	2010 MP Amendment	(9)(10)
1	Frontage Road sewer upgrade (street to influent pump station)	\$366,000	(4)(5)	--	(11)
2	Influent pump station upgrade	\$670,900		\$571,600	
3	Influent screening system	\$327,400		\$371,600	
4	Grit removal system	\$402,700		\$284,100	(12)
5	Phase I Extended Aeration + Secondary Clarifiers	\$3,877,500		\$3,671,300	
6	Phase I Sludge digesters	\$67,700		\$166,300	(13)
7	Phase I Sludge drying beds	\$1,160,700		\$992,300	
8	Controls and Blower Building			\$232,600	(14)
9	Non-Potable Plant Water System			\$191,200	(14)
10	Site Piping			\$642,000	(15)
	Construction Subtotal	\$6,872,900		\$7,123,000	
11	Contingency	\$2,061,870	(6)	\$1,780,750	(16)
12	Design-Phase Engineering	\$923,093		\$966,615	
13	Construction Management	\$1,138,777	(7)	\$1,095,255	(7)
14	Environmental Mitigation	--	(8)	--	(8)
15	Environmental Monitoring	--	(8)	--	(8)
16	Permitting Fees	--	(8)	--	(8)
17	Finance Costs	--	(17)	--	(17)
	WWTF PROJECT TOTAL (Rounded to 1000)	\$10,997,000		\$10,966,000	

Notes:

- (1) ENR CCI: November 2008 = 8602
- (2) Costs are from the January 2009 Southland WWTF Master Plan.
- (3) Costs are escalated by 4 % per year to anticipated midpoint of construction (assumed January 2011).
- (4) The Frontage Rd Sewer Upgrade project includes the sewer main from Division St. to the influent pump station. The portion between the street and the influent pump station is currently included in the Southland WWTF Upgrades project scope of work, but may be moved to the Waterline Intertie Project for expedited construction.
- (5) The cost for this portion of Frontage Rd was estimated by prorating the cost opinion for the Frontage Road Sewer Upgrade (based on linear footage) to arrive at the 2008 Construction Cost Opinion. A 4% per year escalation was used to arrive at the 2011 midpoint of construction cost opinion.
- (6) Contingency is estimated at 30% of construction subtotal.
- (7) To be updated by CM Team; assumed to be 30% of Jan 2009 MP construction subtotal minus the engineering fee.
- (8) Costs to be developed with EIR process
- (9) ENR CCI: April 2010 = 8677
- (10) Costs are from the August 2010 Southland WWTF Master Plan Amendment #1.
- (11) The Frontage Road Sewer Upgrade Project has been developed separately.
- (12) One of two grit removal systems is required for Phases 1 and 2. A second grit removal system is budgeted for Phase 3.
- (13) The design recommendations changed from sludge holding lagoons to digesters in the MP Amendment to provide a reduction in the amount of dry sludge hauled. Earthen berms were added to provide operational flexibility.
- (14) Line item has been added since the January 2009 Master Plan.
- (15) Site piping was moved to its own line item for accuracy in developing the cost opinion.
- (16) Contingency is estimated at 25% of construction subtotal.
- (17) Finance costs to be determined.

TO: LISA BOGNUDA ^{LSB}
ACTING GENERAL MANAGER

FROM: PETER SEVCIK
DISTRICT ENGINEER

DATE: DECEMBER 9, 2010



MONTHLY ENGINEER UPDATE

ITEM

NCSD District Engineer Peter Sevcik re Recent District Engineer Activities [NO ACTION REQUESTED].

BACKGROUND

Peter Sevcik is scheduled to summarize the attached outline.

RECOMMENDATION

Staff recommends that your Honorable Board receive the presentations and ask questions as appropriate.

ATTACHMENT

- District Engineer Activities Outline



NIPOMO COMMUNITY SERVICES DISTRICT

148 SOUTH WILSON STREET
POST OFFICE BOX 326
NIPOMO, CA 93444 - 0326
(805) 929-1133 FAX (805) 929-1932
Web site address www.ncsd.ca.gov

MEMORANDUM

TO: MICHAEL LEBRUN, P.E., INTERIM GENERAL MANAGER
FROM: PETER V. SEVCIK, P.E., DISTRICT ENGINEER
DATE: DECEMBER 15, 2010
RE: DISTRICT ENGINEER ACTIVITIES UPDATE

- **Santa Maria Waterline Intertie Project**
 - Continue to work on preparation of IRWM Implementation Grant application
 - Working with District Legal Counsel to develop "front-end" bid documents
 - Assisting land acquisition consultant
 - Assisting assessment engineer
- **Southland WWTF Upgrade**
 - Reviewed Draft Concept Design Report and peer review comments with AECOM
 - Assisting EIR consultant with development of additional disposal options and alternatives for administrative draft EIR
- **Willow Road Waterline Extension Phase 1 Project**
 - Met with Cannon to review construction in progress
- **Willow Road Waterline Extension Phase 2 Project**
 - Bid to be awarded 12/14
- **Frontage Road Trunk Sewer Replacement Project**
 - Working with environmental consultant to address comments to Notice of Intent to Adopt Mitigated Negative Declaration
 - Reviewed draft Final Plans for project
- **Water and Sewer Master Plan Implementation**
 - Reviewing draft final plans for SCADA Upgrade Project
 - Coordinating preliminary design of additional water tanks at Dana Foothill Road
- **Safety Program**
 - Conducted quarterly safety training for all District employees on 11/18
 - Continue to coordinate on-line safety training for all District employees
- **Regulatory Compliance**
 - Submitted monthly compliance reports for the water and wastewater systems

District Engineer Activities Monthly Summary

December 15, 2010

Page 2

- **Other**

- Managing development of Urban Water Management Plan Update
- Working with County to make adjustments to District facilities for Nipomo Safe Routes to School Project
- Working with County to make adjustments to District facilities for Repaving Project