

TO: MICHAEL LEBRUN *MSL*
INTERIM GENERAL MANAGER

FROM: PETER SEVCIK
DISTRICT ENGINEER

DATE: JANUARY 5, 2011



SOUTHLAND WWTF UPGRADE PROJECT UPDATE

ITEM

Mike Nunley of AECOM Engineering to provide Southland WWTF Upgrade project status [NO ACTION REQUESTED].

BACKGROUND

Mike Nunley is scheduled to summarize the attached report.

RECOMMENDATION

Staff recommends that your Honorable Board receive the presentation and ask questions as appropriate.

ATTACHMENTS

- January 2011 Southland WWTF Upgrade Design Phase Status Report

Memorandum

To	Michael LeBrun, PE, Interim General Manager Peter Sevcik, PE, District Engineer	Page	1
CC	Jon Hanlon, Eileen Shields		
Subject	Southland WWTF Phase 1 Improvements – Design Phase Status Report		
From	Michael K. Nunley, PE		
Date	January 5, 2011		

The Project Team has completed the following items this month:

1. The final Concept Design Report was submitted December 15th, on schedule.
2. AECOM has been working to revise Technical Memorandum #1 – Operations during Construction and Permitting.
3. Work has begun on the administrative draft Report of Waste Discharge, required for the RWQCB permitting.
4. AECOM continues work on design documents for the 60% submittal.

Schedule

The Project Schedule is attached. A baseline was set at the August 4, 2010 based on the District's request. The schedule has been updated to reflect the current project status.

Budget Status

The Invoice Summary is attached. The Invoice Summary indicates an amount invoiced which is consistent with the work completed to date. The project budget is attached. The project cost opinion has been updated based on the final Concept Design Report

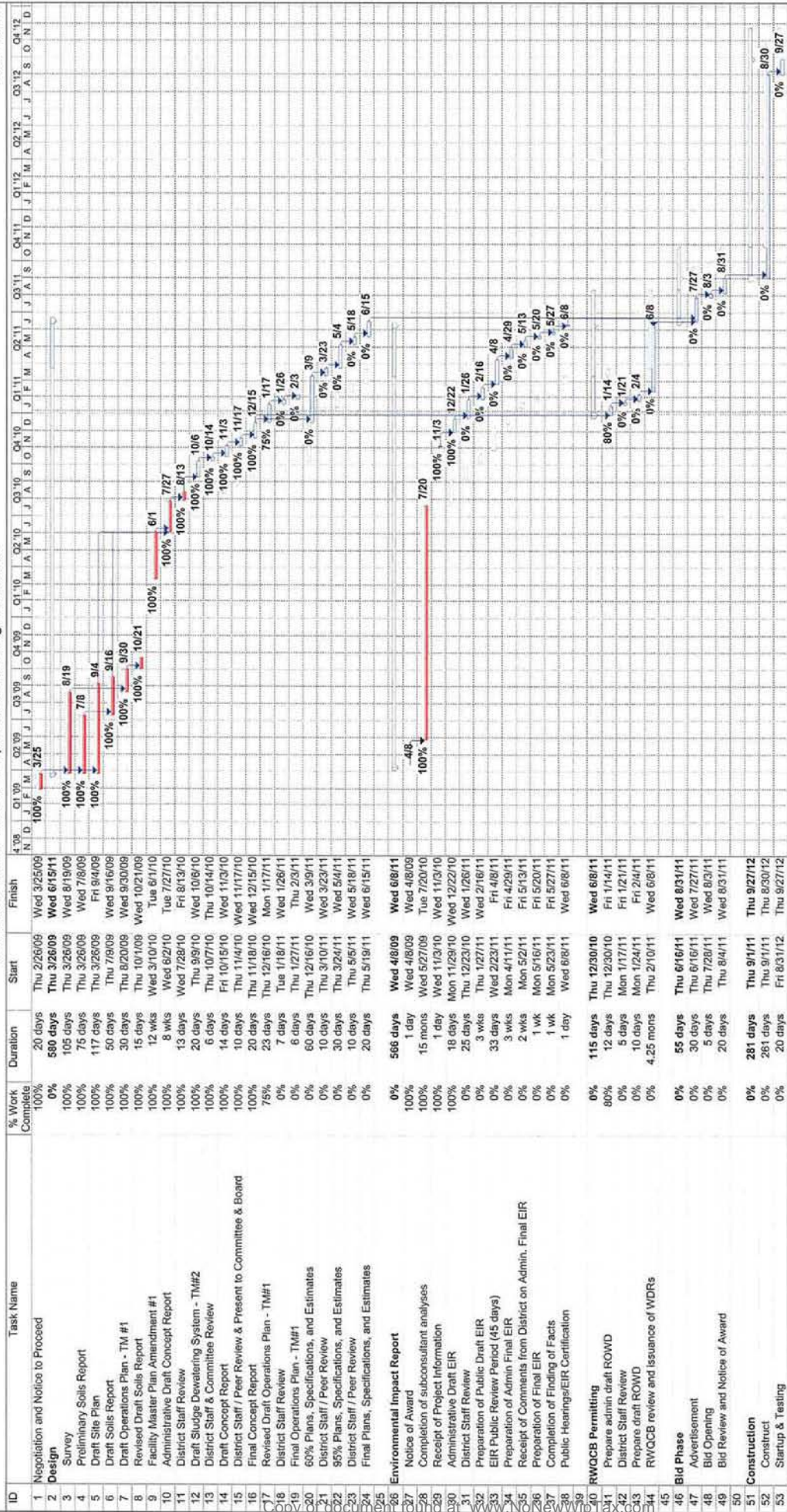
Yours Sincerely,



Michael K. Nunley, PE

Enclosures: Project Schedule
Invoice Summary
Project Budget Summary

Southland WWTF Phase 1 Improvements Design Schedule



Project: Southland Design 6.03.09
Date: Wed 1/5/11

Task Progress: Task Progress Baseline

Milestone Summary: Milestone Baseline Milestone Summary

Rollup Critical Task: Rollup Milestone Rollup Baseline

Rollup Baseline Milestone: Scale Baseline Split

External Tasks: Group By Summary Deadline

Page 1

Project Budget Summary

12/31/2010

Engineering Services for NCSD - Southland WWTF Upgrade

Nipomo CSD

	Total Budget	Amount Previously Invoiced	Current Invoice Amount	% of Budget Earned to date	% of Work Complete
Task Group 1 - Concept Design Phase	\$242,179.00	\$229,330.57	\$7,650.45	98%	98%
Task Group 2 - Construction Documents	\$566,856.00	\$23,030.73	\$14,311.35	7%	7%
Task Group 3 - Project Management	\$97,796.00	\$58,939.65	\$1,058.40	61%	61%
Task Group 4 - Assistance During Bid	\$39,539.00	\$0.00	\$0.00	0%	0%
Task Group 5 - Office Engineering Services	\$147,198.00	\$0.00	\$0.00	0%	0%
Task Group 6 - Amendment 1 Facility MP	\$37,020.00	\$37,020.00	\$0.00	100%	100%
Task Group 7 - Waste Discharge Report	\$30,130.00	\$0.00	\$3,920.40	13%	13%
Total	\$1,160,718.00	\$348,320.95	\$26,940.60	32%	32%

Date Printed 1/5/2011

Item	Description	Budgeted Amount Dec 2010 CDR (1)(2)	Updated Amount
1	Influent Pump Station & Flowmeter	\$ 509,400	
2	Spiral Screening System	\$ 352,100	
3	Grit Removal System	\$ 274,000	
4	Extended Aeration System	\$ 1,268,700	
5	Secondary Clarifier	\$ 1,767,000	
6	Sludge Thickening System	\$ 251,800	
7	Emergency Holding Basin	\$ 80,000	
8	Sludge Drying Beds	\$ 787,200	
9	Controls & Blower Building	\$ 251,100	
10	Non-Potable Plant Water System	\$ 226,400	
11	Site Piping	\$ 651,500	
12	Instrumentation & Controls	\$ 307,500	
13	Electrical	\$ 398,700	
	Construction Subtotal	\$ 7,125,000	
11	Construction Contingency	\$ 1,781,250 (3)	
	Construction Total	\$ 8,906,250	
12	Environmental Impact Report	\$ 93,400	
13	Design-Phase Engineering	\$ 1,160,718 (4)	
14	Construction Management	\$ 1,068,750 (5)	
15	Environmental Mitigation & Monitoring Allowance	\$ 142,500 (6)	
16	Permitting Fees Allowance	\$ 5,000 (7)	
17	Non-Construction Contingency	\$ 618,000 (8)	
	WWTF Phase 1 Improvements Estimated Total	\$ 11,995,000 (9)	

Notes:

- (1) ENR CCI (Dec 2010) = 8952
- (2) Costs are escalated by 2% per year to midpoint of construction (estimated 3/12/2012)
- (3) Construction contingency is estimated at 25% of construction subtotal
- (4) Design-Phase engineering costs are a sum based on original contract (May 2009), and scope amendments #1 (Jun 2009), #2 (Mar 2010), and #3 (Sept 2010)
- (5) To be updated by CM team; Construction Management costs estimated at 15% of construction subtotal.
- (6) Environmental mitigation and monitoring costs are estimated at 2% of construction subtotal and provided as an allowance. These costs will be further developed with the EIR process.
- (7) Permitting fees are estimated and provided as an allowance. These costs will be further developed with the EIR process.
- (8) Non-construction contingency is estimated at 25% of the non-construction total (line items 12 through 16).
- (9) Town Sewer System Financial Plan, August 24, 2007, assumes \$12 million project costs to be funded as follows:
 - \$8.9 million from new long-term debt (\$10.6 million par value)
 - \$2.6 million from Town Sewer Funded Replacement Fund
 - \$0.5 million from Town Sewer Capital Improvement Fund

TO: MICHAEL LEBRUN *MSL*
INTERIM GENERAL MANAGER

FROM: PETER SEVCIK
DISTRICT ENGINEER

DATE: JANUARY 7, 2011



NCSD DISTRICT ENGINEER 2010 ACTIVITIES SUMMARY

ITEM

NCSD District Engineer Peter Sevcik re Summary of 2010 District Engineer Activities [NO ACTION REQUESTED].

BACKGROUND

Peter Sevcik is scheduled to summarize the attached memorandum.

RECOMMENDATION

Staff recommends that your Honorable Board receive the presentations and ask questions as appropriate.

ATTACHMENT

- District Engineer 2010 Activities Outline



NIPOMO COMMUNITY SERVICES DISTRICT

148 SOUTH WILSON STREET
POST OFFICE BOX 326
NIPOMO, CA 93444 - 0326
(805) 929-1133 FAX (805) 929-1932
Web site address www.ncsd.ca.gov

MEMORANDUM

TO: MICHAEL LEBRUN, P.E., INTERIM GENERAL MANAGER
FROM: PETER V. SEVCIK, P.E., DISTRICT ENGINEER
DATE: JANUARY 6, 2011
RE: DISTRICT ENGINEER ACTIVITIES UPDATE – 2011 ANNUAL SUMMARY

PROJECTS COMPLETED:

- **Misty Glen Pressure Reducing Station**
 - 6 inch meter, 4 inch pressure reducing valve, 6 inch pressure sustaining valve, isolation valves, electrical service and SCADA equipment
 - Provides redundant connection to Blacklake pressure zone
 - Constructed, accepted and placed into service
 - Construction cost \$83,230
- **Sundale Well Electrification Project**
 - Complete rebuild of fire damaged natural gas powered well
 - Conversion to 250 hP electric motor, VFD control, SCADA equipment, steel building, submersible level transducer, generator, transfer switch and new 400 amp 480 volt, 3 phase electric service
 - Largest District well with 1000 gallon per minute capacity
 - Constructed, accepted and placed into service
 - Insurance claim finalized
 - Construction cost \$311,012
- **Shop Storage Building**
 - Designed, bid, contract awarded, constructed, accepted and placed into service
 - 40 foot by 50 foot steel building on reinforced concrete slab with integral footings
 - Construction cost \$86,630
- **Quad Tank #1 and #2 Rehabilitation Project**
 - Bid, contract awarded, constructed, accepted and placed into service
 - Safety modifications and complete recoating of interior of two 500,000 gallon steel tanks
 - Construction cost \$193,979

PROJECTS IN CONSTRUCTION:

- **Willow Road Waterline Extension Phase 1 Project**
 - Concurrent with County Willow Road Phase 1 Roadway Project
 - Bid and contracted awarded
 - Construction in progress
 - 1260 lineal feet of 14 inch diameter and 6280 lineal feet of 12 inch diameter waterline and associated ancillary facilities
 - Estimated construction cost \$1,000,000

- **Willow Road Waterline Extension Phase 2 Project**
 - Concurrent with County Willow Road Phase 2 Roadway Project
 - Design, bid and contracted awarded
 - Reimbursement agreement negotiated with County
 - Construction to begin early 2011
 - 3115 feet of 12 inch diameter waterline and associated ancillary facilities
 - Estimated construction cost \$500,000

PROJECTS IN DESIGN AND PLANNING STAGES:

- **Frontage Road Trunk Sewer Replacement Project**
 - Developed plan for bid document preparation
 - Finalized Draft Expanded Initial Study and Mitigated Negative Declaration based on Board review
 - Distributed Notice of Intent to Adopt Mitigated Negative Declaration to State Clearinghouse, County Clerk's Office and interested parties
 - Draft final design drawings and specifications completed
 - Worked with environmental consultant to address comments to Notice of Intent to Adopt Mitigated Negative Declaration
 - Obtained preliminary encroachment permit from SLO County
 - Obtained APCD Naturally Occurring Asbestos ATCM Exemption
 - Estimated construction cost \$2,200,000

- **Southland WWTF Upgrade**
 - Worked with AECOM to examine flows and loading for start-up conditions
 - Managed hydrogeologic investigation for Pasquini property
 - Managed development of Master Plan Amendment #1 that provided revised site plan, phasing plan and cost estimate
 - Worked with AECOM to incorporate improved biosolids handling facilities into upgrade project
 - Administrative Draft Concept Design Report, Draft Concept Design Report, peer review and Final Concept Design Report completed
 - Final Geotechnical Report for Southland WWTF Upgrade project completed
 - Assisted EIR consultant with development of additional disposal options and alternatives for Administrative Draft EIR
 - Administrative Draft of EIR completed
 - Met with Regional Water Quality Control Board staff and AECOM to discuss permitting requirements
 - Prepared Committee Agendas and Packets
 - Estimated construction cost \$8,906,250

- **Santa Maria Waterline Intertie Project**
 - Prepared Proposition 84 IRWM Implementation Grant application for \$2.3 million for construction of Waterline Intertie Project as part of SLO County's grant application to DWR
 - 90% design drawings and specifications completed for Bid Package #2, Nipomo Pipeline Improvements, Bid Package #3, Blosser Road, and Bid Package #4 Joshua Street Pump Station and Reservoir
 - Draft final design drawings and specifications for Bid Package #2 completed
 - Final design drawings and specifications for Bid Package #3 completed
 - Met with SLO County Planning and attended SCAC Land Use Committee, SLO County Subdivision Review Board and SLO County Planning Commission meetings regarding public lot for pump station
 - Met with SLO County Public Works regarding encroachment permit
 - Met with CA Department of Fish and Game regarding permit for pipeline in Santa Maria River
 - Met with PG&E to discuss requirements for pump station power
 - Met with AECOM and MNS to discuss construction sequencing
 - Met with SLO County Public Works to discuss assessment district formation
 - Assisted land acquisition consultant
 - Assisted assessment engineer
 - Prepared Committee Agendas and Packets
 - Estimated construction cost \$18,260,200

- **Water and Sewer Master Plan Implementation**
 - 90% design for SCADA Upgrade Project Completed
 - Draft final design for SCADA Upgrade Project Completed
 - Draft concept plans for additional water tanks at Dana Foothill Road completed

OTHER PROJECTS AND PROGRAMS:

- **Safety Program**
 - Conducted training for operations employees on 1/12, 3/11, 4/13, 6/8, 7/13, 9/14, 10/12, and 12/14
 - Conducted quarterly safety training for all employees on 2/11, 5/13, 8/12 and 11/18
 - Oversaw Confined Space and Lock Out/Tag Out training for operations employees on 2/25
 - Coordinated First Aid/CPR training for all operations employees on 7/22
 - Conducted new employee safety orientation on 8/4
 - Coordinated Traffic Control Training for all operations employees on 8/17
 - Coordinated Defensive Driver Training for all operations employees on 8/18
 - Observed operations employees/Cal Fire joint Confined-Space training on 9/9
 - Coordinated annual hearing tests for all operations employees on 9/30
 - Coordinated noise survey for operations worksites on 11/9
 - Continue to coordinate on-line safety training for all District Employees

- **Sewer System Management Plan**
 - Fats, Oils and Grease (FOG) Control program initiated
 - Established cleaning zones and corresponding maps/tracking forms for entire sanitary sewer system
 - Pretreatment needs analysis initiated

- **Urban Water Management Plan**
 - Managed development of Urban Water Management Plan Update
 - Administrative draft completed
 - Public Review Draft and Revised Public Review Draft Completed

- **Development Oversight**
 - Mailed notice of Intent to Serve extension to owners of all active projects
 - Tract 2663, 220 Buckhorn, Bud Kelly – Accepted and completed
 - CO 06-0225, 781 W Tefft, Bill Kengel – Issued revised Intent-to-Serve letter
 - Tract 2441, Grande and Blume, Gray Trust – New Intent-to-Serve letter developed for Board approval
 - Developed application form to implement phased capacity fee ordinance

- **Regulatory Compliance**
 - Annual CDPH Water System Report
 - 12 monthly CDPH compliance reports for the water system
 - 4 quarterly CDPH compliance reports for the water system
 - Annual RWQCB compliance report for the Blacklake WWTF
 - Annual RWQCB compliance report for the Southland WWTF
 - 12 monthly compliance reports for the Blacklake WWTF
 - 12 monthly compliance reports for the Southland WWTF
 - 12 monthly compliance reports for the Blacklake wastewater collection system
 - 12 monthly compliance reports for the Southland wastewater collection system
 - Attended California Department of Public Health Regulatory Compliance Seminar on 11/3

- **County Projects**
 - Worked with County to make adjustments to District facilities for Nipomo Safe Routes to School Project
 - Worked with County to make adjustments to District facilities for Repaving Project

- **Other Projects**
 - Oversaw sludge dredging project at Southland WWTF
 - Initiated review of District Standards and Specifications