

Nipomo Mesa Supplemental Water Project Assessment District No. 1

Nipomo Community Services District
State of California



Part V

Assessment Diagram

For
Woodlands Mutual Water Company

February 2012 Draft



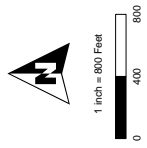
**ASSESSMENT
DIAGRAM**

NIPOMO MESA
SUPPLEMENTAL
SERVICES DISTRICT
ASSESSMENT DISTRICT
NO.1

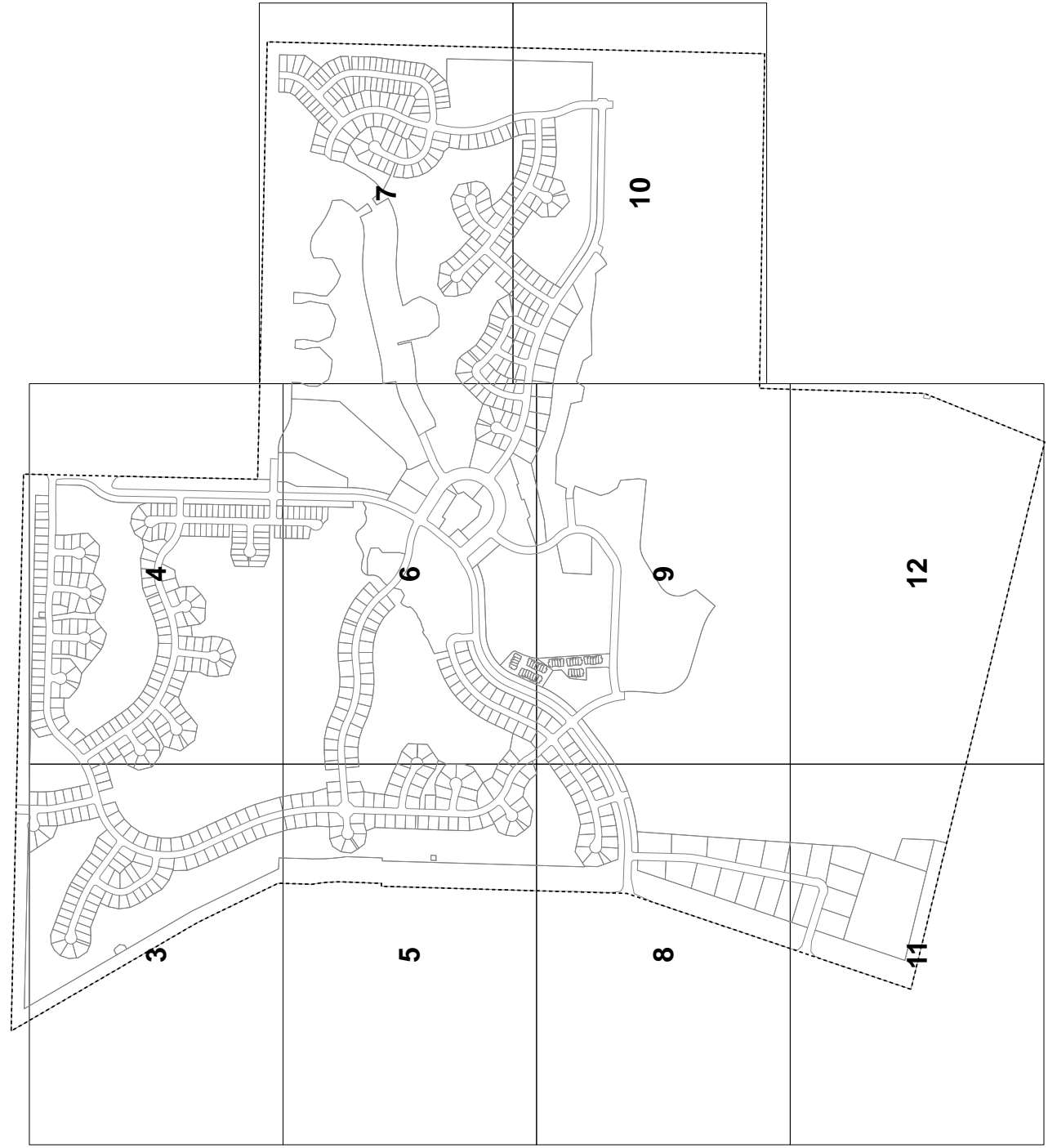
NIPOMO COMMUNITY
SERVICES DISTRICT
STATE OF CALIFORNIA

Legend

-  ASSM BOUNDARY
-  ASSESSOR PARCEL
-  DIAGRAM SHEET



**SHEET:
1 OF 12**



LOTS ON THIS SHEET ARE
BASED ON ASSESSORS
MAP COUNTY OF SAN LUIS
OBISPO COUNTY, PG 27
506 502 503 504 505 506
507 508 509 600 601 602
603 604 605 606 607 608
609 610 611 701 702 703
704 705 706

LOTS SHOWN ON THIS
MAP ARE BASED ON THE
WOODLAND TRACTS: 2341-1
BK 26 PG 14-17, 2341-2 BK 27
PG 88-93, 2341-3 BK 30 PG
10-15, 2341-4 BK 31 PG 16-20,
2341-5 BK 31 PG 35-42, 2341-6
BK 31 PG 15-16, LOS
BERROS TRACT BK A
PG 108.

ASSESSMENT NUMBER INDEX





<u>SHEET NUMBER:</u>	<u>ASSESSMENT NUMBER:</u>
SHEET 3	0001-0096
SHEET 4	0097-0309
SHEET 5	0310-0377
SHEET 6	0378-0513
SHEET 7	0514-0684
SHEET 8	0685-0720
SHEET 9	0721-0763
SHEET 10	0764-0821
SHEET 11	0822-0831
SHEET 12	0832

**ASSESSMENT
DIAGRAM**

NIPOMO MESA
SUPPLEMENTAL
MAP TO THE
ASSESSMENT DISTRICT
NO. 1

NIPOMO COMMUNITY
SERVICES DISTRICT
STATE OF CALIFORNIA

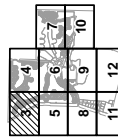
Legend

-  ASSESSOR PARCEL
-  ASSESSOR PARCEL
-  ASSESSOR PARCEL
-  DIAGRAM SHEET



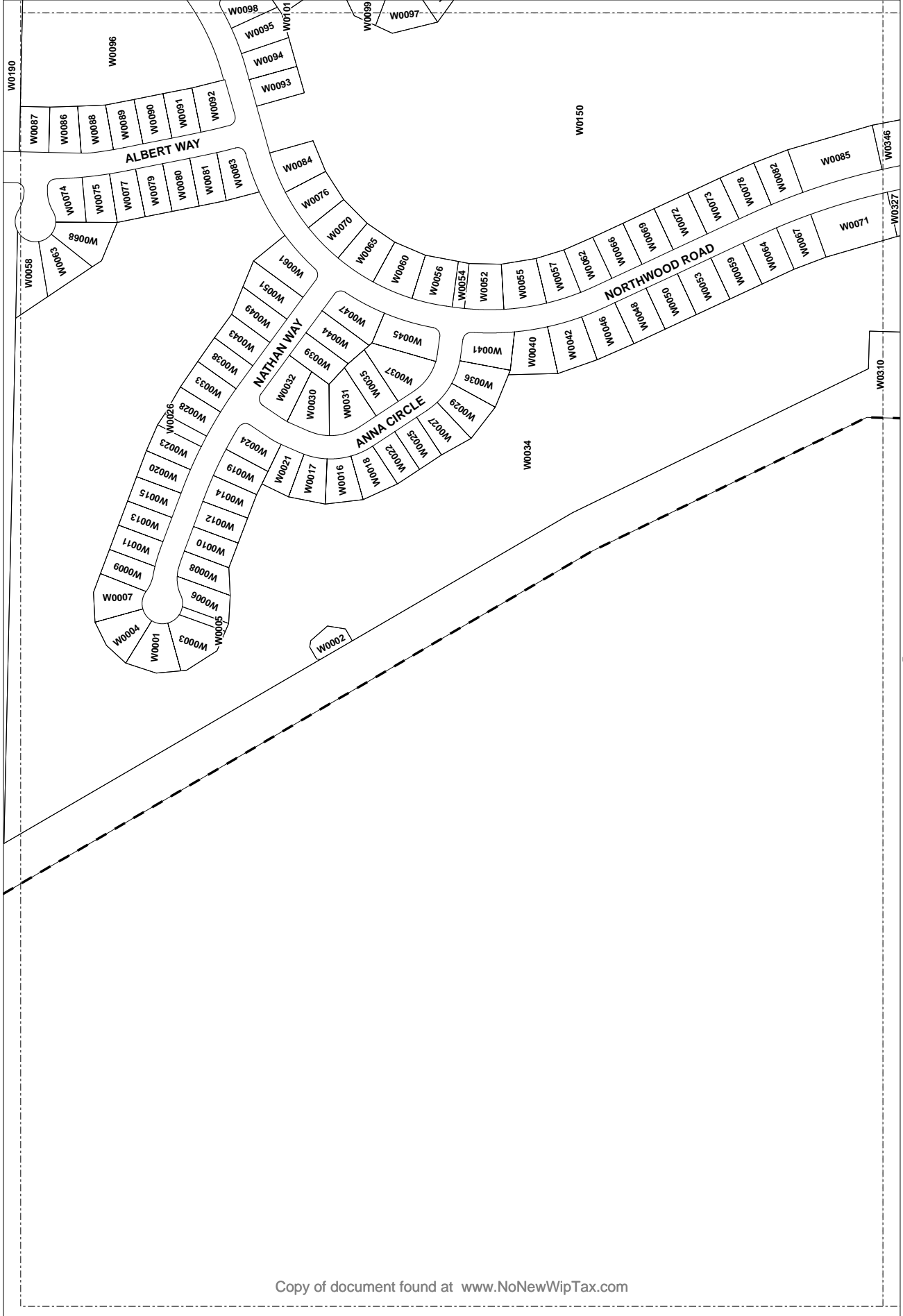
1 Inch = 200 Feet
0 100 200

**SHEET:
3 OF 12**



LOTS ON THIS SHEET ARE
BASED ON ASSESSOR'S
MAP COUNTY OF SAN LUIS
OBISPO COUNTY
507-508, 509, 500, 601, 602,
603, 604, 605, 606, 607, 608,
609, 610, 701, 702, 703,
704, 705, 706.

LOTS SHOWN ON THIS
DIAGRAM ARE THE
WOODLAND TRACTS: 2341-1
BK 26 PG 14-41, 2341-2 BK 27
PG 89-93, 2341-3 BK 30 PG
105-109, 2341-4 BK 31 PG
2341-5 BK 31 PG 35-42, 2759
BK 31 PG 15-16, LOS
BERNOS TRACT BKA
PG 108.



**ASSESSMENT
DIAGRAM**

NIPOMO MESA
SUPPLEMENTAL
REVENUE DISTRICT
ASSESSMENT DISTRICT
NO.1

NIPOMO COMMUNITY
SERVICES DISTRICT
STATE OF CALIFORNIA

Legend

-  ASSESSOR PARCEL
-  ASSESSOR BOUNDARY
-  DIAGRAM SHEET



1 Inch = 200 Feet
0 100 200

**SHEET:
4 OF 12**



LOTS ON THIS SHEET ARE
BASED ON ASSESSOR'S
MAP COUNTY OF SAN LUIS
OBISPO, 1995, 1996, 1997,
1998, 1999, 2000, 2001,
2002, 2003, 2004, 2005, 2006,
2007, 2008, 2009, 2010, 2011,
2012, 2013, 2014, 2015, 2016,
2017, 2018, 2019, 2020, 2021,
2022, 2023, 2024, 2025, 2026,
2027, 2028, 2029, 2030, 2031,
2032, 2033, 2034, 2035, 2036,
2037, 2038, 2039, 2040, 2041,
2042, 2043, 2044, 2045, 2046,
2047, 2048, 2049, 2050, 2051,
2052, 2053, 2054, 2055, 2056,
2057, 2058, 2059, 2060, 2061, 2062,
2063, 2064, 2065, 2066, 2067, 2068,
2069, 2070, 2071, 2072, 2073,
2074, 2075, 2076.

LOTS SHOWN ON THIS
SHEET ARE BASED ON THE
WOODLAND TRACTS: 2341-1
BK 26 PG 14-41, 2341-2 BK 27
PG 89-93, 2341-3 BK 30 PG
89-93, 2341-4 BK 31 PG 89-93,
2341-5 BK 31 PG 89-93, 2341-6
BK 31 PG 15-16, LOS
BERROS TRACT BKA
PG 108.



W0190

NORTHWOOD DRIVE

W0086

W0086

W0204

W0309

VIA CONCHA ROAD

TRAIL VIEW PLACE

W0832

W0495

W0492

W0486

W0483

W0472

W0286

6

**ASSESSMENT
DIAGRAM**

NIPOMO MESA
SUPPLEMENTAL
ASSESSMENT DISTRICT
NO. 1

NIPOMO COMMUNITY
SERVICES DISTRICT
STATE OF CALIFORNIA

Legend

-  ASSESSOR PARCEL
-  ASSESSOR BOUNDARY
-  DIAGRAM SHEET



1 inch = 200 Feet
0 100 200

**SHEET:
6 OF 12**



LOTS SHOWN ON THIS
MAP ARE BASED ON THE
WOODLAND TRACTS: 2341-1
BK 28 PG 14-41, 2341-2 BK 27
PG 89-93, 2341-3 BK 30 PG
89-93, 2341-4 BK 31 PG 94-97,
2341-5 BK 31 PG 98-102, 2341-6
BK 31 PG 103-107, 2341-7
BK 31 PG 108-112, 2341-8
BK 31 PG 113-117, 2341-9
BK 31 PG 118-122, 2341-10
BK 31 PG 123-127, 2341-11
BK 31 PG 128-132, 2341-12
BK 31 PG 133-137, 2341-13
BK 31 PG 138-142, 2341-14
BK 31 PG 143-147, 2341-15
BK 31 PG 148-152, 2341-16
BK 31 PG 153-157, 2341-17
BK 31 PG 158-162, 2341-18
BK 31 PG 163-167, 2341-19
BK 31 PG 168-172, 2341-20
BK 31 PG 173-177, 2341-21
BK 31 PG 178-182, 2341-22
BK 31 PG 183-187, 2341-23
BK 31 PG 188-192, 2341-24
BK 31 PG 193-197, 2341-25
BK 31 PG 198-202, 2341-26
BK 31 PG 203-207, 2341-27
BK 31 PG 208-212, 2341-28
BK 31 PG 213-217, 2341-29
BK 31 PG 218-222, 2341-30
BK 31 PG 223-227, 2341-31
BK 31 PG 228-232, 2341-32
BK 31 PG 233-237, 2341-33
BK 31 PG 238-242, 2341-34
BK 31 PG 243-247, 2341-35
BK 31 PG 248-252, 2341-36
BK 31 PG 253-257, 2341-37
BK 31 PG 258-262, 2341-38
BK 31 PG 263-267, 2341-39
BK 31 PG 268-272, 2341-40
BK 31 PG 273-277, 2341-41
BK 31 PG 278-282, 2341-42
BK 31 PG 283-287, 2341-43
BK 31 PG 288-292, 2341-44
BK 31 PG 293-297, 2341-45
BK 31 PG 298-302, 2341-46
BK 31 PG 303-307, 2341-47
BK 31 PG 308-312, 2341-48
BK 31 PG 313-317, 2341-49
BK 31 PG 318-322, 2341-50
BK 31 PG 323-327, 2341-51
BK 31 PG 328-332, 2341-52
BK 31 PG 333-337, 2341-53
BK 31 PG 338-342, 2341-54
BK 31 PG 343-347, 2341-55
BK 31 PG 348-352, 2341-56
BK 31 PG 353-357, 2341-57
BK 31 PG 358-362, 2341-58
BK 31 PG 363-367, 2341-59
BK 31 PG 368-372, 2341-60
BK 31 PG 373-377, 2341-61
BK 31 PG 378-382, 2341-62
BK 31 PG 383-387, 2341-63
BK 31 PG 388-392, 2341-64
BK 31 PG 393-397, 2341-65
BK 31 PG 398-402, 2341-66
BK 31 PG 403-407, 2341-67
BK 31 PG 408-412, 2341-68
BK 31 PG 413-417, 2341-69
BK 31 PG 418-422, 2341-70
BK 31 PG 423-427, 2341-71
BK 31 PG 428-432, 2341-72
BK 31 PG 433-437, 2341-73
BK 31 PG 438-442, 2341-74
BK 31 PG 443-447, 2341-75
BK 31 PG 448-452, 2341-76
BK 31 PG 453-457, 2341-77
BK 31 PG 458-462, 2341-78
BK 31 PG 463-467, 2341-79
BK 31 PG 468-472, 2341-80
BK 31 PG 473-477, 2341-81
BK 31 PG 478-482, 2341-82
BK 31 PG 483-487, 2341-83
BK 31 PG 488-492, 2341-84
BK 31 PG 493-497, 2341-85
BK 31 PG 498-502, 2341-86
BK 31 PG 503-507, 2341-87
BK 31 PG 508-512, 2341-88
BK 31 PG 513-517, 2341-89
BK 31 PG 518-522, 2341-90
BK 31 PG 523-527, 2341-91
BK 31 PG 528-532, 2341-92
BK 31 PG 533-537, 2341-93
BK 31 PG 538-542, 2341-94
BK 31 PG 543-547, 2341-95
BK 31 PG 548-552, 2341-96
BK 31 PG 553-557, 2341-97
BK 31 PG 558-562, 2341-98
BK 31 PG 563-567, 2341-99
BK 31 PG 568-572, 2341-100
BK 31 PG 573-577, 2341-101
BK 31 PG 578-582, 2341-102
BK 31 PG 583-587, 2341-103
BK 31 PG 588-592, 2341-104
BK 31 PG 593-597, 2341-105
BK 31 PG 598-602, 2341-106
BK 31 PG 603-607, 2341-107
BK 31 PG 608-612, 2341-108
BK 31 PG 613-617, 2341-109
BK 31 PG 618-622, 2341-110
BK 31 PG 623-627, 2341-111
BK 31 PG 628-632, 2341-112
BK 31 PG 633-637, 2341-113
BK 31 PG 638-642, 2341-114
BK 31 PG 643-647, 2341-115
BK 31 PG 648-652, 2341-116
BK 31 PG 653-657, 2341-117
BK 31 PG 658-662, 2341-118
BK 31 PG 663-667, 2341-119
BK 31 PG 668-672, 2341-120
BK 31 PG 673-677, 2341-121
BK 31 PG 678-682, 2341-122
BK 31 PG 683-687, 2341-123
BK 31 PG 688-692, 2341-124
BK 31 PG 693-697, 2341-125
BK 31 PG 698-702, 2341-126
BK 31 PG 703-707, 2341-127
BK 31 PG 708-712, 2341-128
BK 31 PG 713-717, 2341-129
BK 31 PG 718-722, 2341-130
BK 31 PG 723-727, 2341-131
BK 31 PG 728-732, 2341-132
BK 31 PG 733-737, 2341-133
BK 31 PG 738-742, 2341-134
BK 31 PG 743-747, 2341-135
BK 31 PG 748-752, 2341-136
BK 31 PG 753-757, 2341-137
BK 31 PG 758-762, 2341-138
BK 31 PG 763-767, 2341-139
BK 31 PG 768-772, 2341-140
BK 31 PG 773-777, 2341-141
BK 31 PG 778-782, 2341-142
BK 31 PG 783-787, 2341-143
BK 31 PG 788-792, 2341-144
BK 31 PG 793-797, 2341-145
BK 31 PG 798-802, 2341-146
BK 31 PG 803-807, 2341-147
BK 31 PG 808-812, 2341-148
BK 31 PG 813-817, 2341-149
BK 31 PG 818-822, 2341-150
BK 31 PG 823-827, 2341-151
BK 31 PG 828-832, 2341-152
BK 31 PG 833-837, 2341-153
BK 31 PG 838-842, 2341-154
BK 31 PG 843-847, 2341-155
BK 31 PG 848-852, 2341-156
BK 31 PG 853-857, 2341-157
BK 31 PG 858-862, 2341-158
BK 31 PG 863-867, 2341-159
BK 31 PG 868-872, 2341-160
BK 31 PG 873-877, 2341-161
BK 31 PG 878-882, 2341-162
BK 31 PG 883-887, 2341-163
BK 31 PG 888-892, 2341-164
BK 31 PG 893-897, 2341-165
BK 31 PG 898-902, 2341-166
BK 31 PG 903-907, 2341-167
BK 31 PG 908-912, 2341-168
BK 31 PG 913-917, 2341-169
BK 31 PG 918-922, 2341-170
BK 31 PG 923-927, 2341-171
BK 31 PG 928-932, 2341-172
BK 31 PG 933-937, 2341-173
BK 31 PG 938-942, 2341-174
BK 31 PG 943-947, 2341-175
BK 31 PG 948-952, 2341-176
BK 31 PG 953-957, 2341-177
BK 31 PG 958-962, 2341-178
BK 31 PG 963-967, 2341-179
BK 31 PG 968-972, 2341-180
BK 31 PG 973-977, 2341-181
BK 31 PG 978-982, 2341-182
BK 31 PG 983-987, 2341-183
BK 31 PG 988-992, 2341-184
BK 31 PG 993-997, 2341-185
BK 31 PG 998-1002, 2341-186
BK 31 PG 1003-1007, 2341-187
BK 31 PG 1008-1012, 2341-188
BK 31 PG 1013-1017, 2341-189
BK 31 PG 1018-1022, 2341-190
BK 31 PG 1023-1027, 2341-191
BK 31 PG 1028-1032, 2341-192
BK 31 PG 1033-1037, 2341-193
BK 31 PG 1038-1042, 2341-194
BK 31 PG 1043-1047, 2341-195
BK 31 PG 1048-1052, 2341-196
BK 31 PG 1053-1057, 2341-197
BK 31 PG 1058-1062, 2341-198
BK 31 PG 1063-1067, 2341-199
BK 31 PG 1068-1072, 2341-200
BK 31 PG 1073-1077, 2341-201
BK 31 PG 1078-1082, 2341-202
BK 31 PG 1083-1087, 2341-203
BK 31 PG 1088-1092, 2341-204
BK 31 PG 1093-1097, 2341-205
BK 31 PG 1098-1102, 2341-206
BK 31 PG 1103-1107, 2341-207
BK 31 PG 1108-1112, 2341-208
BK 31 PG 1113-1117, 2341-209
BK 31 PG 1118-1122, 2341-210
BK 31 PG 1123-1127, 2341-211
BK 31 PG 1128-1132, 2341-212
BK 31 PG 1133-1137, 2341-213
BK 31 PG 1138-1142, 2341-214
BK 31 PG 1143-1147, 2341-215
BK 31 PG 1148-1152, 2341-216
BK 31 PG 1153-1157, 2341-217
BK 31 PG 1158-1162, 2341-218
BK 31 PG 1163-1167, 2341-219
BK 31 PG 1168-1172, 2341-220
BK 31 PG 1173-1177, 2341-221
BK 31 PG 1178-1182, 2341-222
BK 31 PG 1183-1187, 2341-223
BK 31 PG 1188-1192, 2341-224
BK 31 PG 1193-1197, 2341-225
BK 31 PG 1198-1202, 2341-226
BK 31 PG 1203-1207, 2341-227
BK 31 PG 1208-1212, 2341-228
BK 31 PG 1213-1217, 2341-229
BK 31 PG 1218-1222, 2341-230
BK 31 PG 1223-1227, 2341-231
BK 31 PG 1228-1232, 2341-232
BK 31 PG 1233-1237, 2341-233
BK 31 PG 1238-1242, 2341-234
BK 31 PG 1243-1247, 2341-235
BK 31 PG 1248-1252, 2341-236
BK 31 PG 1253-1257, 2341-237
BK 31 PG 1258-1262, 2341-238
BK 31 PG 1263-1267, 2341-239
BK 31 PG 1268-1272, 2341-240
BK 31 PG 1273-1277, 2341-241
BK 31 PG 1278-1282, 2341-242
BK 31 PG 1283-1287, 2341-243
BK 31 PG 1288-1292, 2341-244
BK 31 PG 1293-1297, 2341-245
BK 31 PG 1298-1302, 2341-246
BK 31 PG 1303-1307, 2341-247
BK 31 PG 1308-1312, 2341-248
BK 31 PG 1313-1317, 2341-249
BK 31 PG 1318-1322, 2341-250
BK 31 PG 1323-1327, 2341-251
BK 31 PG 1328-1332, 2341-252
BK 31 PG 1333-1337, 2341-253
BK 31 PG 1338-1342, 2341-254
BK 31 PG 1343-1347, 2341-255
BK 31 PG 1348-1352, 2341-256
BK 31 PG 1353-1357, 2341-257
BK 31 PG 1358-1362, 2341-258
BK 31 PG 1363-1367, 2341-259
BK 31 PG 1368-1372, 2341-260
BK 31 PG 1373-1377, 2341-261
BK 31 PG 1378-1382, 2341-262
BK 31 PG 1383-1387, 2341-263
BK 31 PG 1388-1392, 2341-264
BK 31 PG 1393-1397, 2341-265
BK 31 PG 1398-1402, 2341-266
BK 31 PG 1403-1407, 2341-267
BK 31 PG 1408-1412, 2341-268
BK 31 PG 1413-1417, 2341-269
BK 31 PG 1418-1422, 2341-270
BK 31 PG 1423-1427, 2341-271
BK 31 PG 1428-1432, 2341-272
BK 31 PG 1433-1437, 2341-273
BK 31 PG 1438-1442, 2341-274
BK 31 PG 1443-1447, 2341-275
BK 31 PG 1448-1452, 2341-276
BK 31 PG 1453-1457, 2341-277
BK 31 PG 1458-1462, 2341-278
BK 31 PG 1463-1467, 2341-279
BK 31 PG 1468-1472, 2341-280
BK 31 PG 1473-1477, 2341-281
BK 31 PG 1478-1482, 2341-282
BK 31 PG 1483-1487, 2341-283
BK 31 PG 1488-1492, 2341-284
BK 31 PG 1493-1497, 2341-285
BK 31 PG 1498-1502, 2341-286
BK 31 PG 1503-1507, 2341-287
BK 31 PG 1508-1512, 2341-288
BK 31 PG 1513-1517, 2341-289
BK 31 PG 1518-1522, 2341-290
BK 31 PG 1523-1527, 2341-291
BK 31 PG 1528-1532, 2341-292
BK 31 PG 1533-1537, 2341-293
BK 31 PG 1538-1542, 2341-294
BK 31 PG 1543-1547, 2341-295
BK 31 PG 1548-1552, 2341-296
BK 31 PG 1553-1557, 2341-297
BK 31 PG 1558-1562, 2341-298
BK 31 PG 1563-1567, 2341-299
BK 31 PG 1568-1572, 2341-300
BK 31 PG 1573-1577, 2341-301
BK 31 PG 1578-1582, 2341-302
BK 31 PG 1583-1587, 2341-303
BK 31 PG 1588-1592, 2341-304
BK 31 PG 1593-1597, 2341-305
BK 31 PG 1598-1602, 2341-306
BK 31 PG 1603-1607, 2341-307
BK 31 PG 1608-1612, 2341-308
BK 31 PG 1613-1617, 2341-309
BK 31 PG 1618-1622, 2341-310
BK 31 PG 1623-1627, 2341-311
BK 31 PG 1628-1632, 2341-312
BK 31 PG 1633-1637, 2341-313
BK 31 PG 1638-1642, 2341-314
BK 31 PG 1643-1647, 2341-315
BK 31 PG 1648-1652, 2341-316
BK 31 PG 1653-1657, 2341-317
BK 31 PG 1658-1662, 2341-318
BK 31 PG 1663-1667, 2341-319
BK 31 PG 1668-1672, 2341-320
BK 31 PG 1673-1677, 2341-321
BK 31 PG 1678-1682, 2341-322
BK 31 PG 1683-1687, 2341-323
BK 31 PG 1688-1692, 2341-324
BK 31 PG 1693-1697, 2341-325
BK 31 PG 1698-1702, 2341-326
BK 31 PG 1703-1707, 2341-327
BK 31 PG 1708-1712, 2341-328
BK 31 PG 1713-1717, 2341-329
BK 31 PG 1718-1722, 2341-330
BK 31 PG 1723-1727, 2341-331
BK 31 PG 1728-1732, 2341-332
BK 31 PG 1733-1737, 2341-333
BK 31 PG 1738-1742, 2341-334
BK 31 PG 1743-1747, 2341-335
BK 31 PG 1748-1752, 2341-336
BK 31 PG 1753-1757, 2341-337
BK 31 PG 1758-1762, 2341-338
BK 31 PG 1763-1767, 2341-339
BK 31 PG 1768-1772, 2341-340
BK 31 PG 1773-1777, 2341-341
BK 31 PG 1778-1782, 2341-342
BK 31 PG 1783-1787, 2341-343
BK 31 PG 1788-1792, 2341-344
BK 31 PG 1793-1797, 2341-345
BK 31 PG 1798-1802, 2341-346
BK 31 PG 1803-1807, 2341-347
BK 31 PG 1808-1812, 2341-348
BK 31 PG 1813-1817, 2341-349
BK 31 PG 1818-1822, 2341-350
BK 31 PG 1823-1827, 2341-351
BK 31 PG 1828-1832, 2341-352
BK 31 PG 1833-1837, 2341-353
BK 31 PG 1838-1842, 2341-354
BK 31 PG 1843-1847, 2341-355
BK 31 PG 1848-1852, 2341-356
BK 31 PG 1853-1857, 2341-357
BK 31 PG 1858-1862, 2341-358
BK 31 PG 1863-1867, 2341-359
BK 31 PG 1868-1872, 2341-360
BK 31 PG 1873-1877, 2341-361
BK 31 PG 1878-1882, 2341-362
BK 31 PG 1883-1887, 2341-363
BK 31 PG 1888-1892, 2341-364
BK 31 PG 1893-1897, 2341-365
BK 31 PG 1898-1902, 2341-366
BK 31 PG 1903-1907, 2341-367
BK 31 PG 1908-1912, 2341-368
BK 31 PG 1913-1917, 2341-369
BK 31 PG 1918-1922, 2341-370
BK 31 PG 1923-1927, 2341-371
BK 31 PG 1928-1932, 2341-372
BK 31 PG 1933-1937, 2341-373
BK 31 PG 1938-1942, 2341-374
BK 31 PG 1943-1947, 2341-375
BK 31 PG 1948-1952, 2341-376
BK 31 PG 1953-1957, 2341-377
BK 31 PG 1958-1962, 2341-378
BK 31 PG 1963-1967, 2341-379
BK 31 PG 1968-1972, 2341-380
BK 31 PG 1973-1977, 2341-381
BK 31 PG 1978-1982, 2341-382
BK 31 PG 1983-1987, 2341-383
BK 31 PG 1988-1992, 2341-384
BK 31 PG 1993-1997, 2341-385
BK 31 PG 1998-2002, 2341-386
BK 31 PG 2003-2007, 2341-387
BK 31 PG 2008-2012, 2341-388
BK 31 PG 2013-2017, 2341-389
BK 31 PG 2018-2022, 2341-390
BK 31 PG 2023-2027, 2341-391
BK 31 PG 2028-2032, 2341-392
BK 31 PG 2033-2037, 2341-393
BK 31 PG 2038-2042, 2341-394
BK 31 PG 2043-2047, 2341-395
BK 31 PG 2048-2052, 2341-396
BK 31 PG 2053-2057, 2341-397
BK 31 PG 2058-2062, 2341-398
BK 31 PG 2063-2067, 2341-399
BK 31 PG 2068-2072, 2341-400
BK 31 PG 2073-2077, 2341-401
BK 31 PG 2078-2082, 2341-402
BK 31 PG 2083-2087, 2341-403
BK 31 PG 2088-2092, 2341-404
BK 31 PG 2093-2097, 2341-405
BK 31 PG 2098-2102, 2341-406
BK 31 PG 2103-2107, 2341-407
BK 31 PG 2108-2112, 2341-408
BK 31 PG 2113-2117, 2341-409
BK 31 PG 2118-2122, 2341-410
BK 31 PG 2123-2127, 2341-411
BK 31 PG 2128-2132, 2341-412
BK 31 PG 2133-2137, 2341-413
BK 31 PG 2138-2142, 2341-414
BK 31 PG 2143-2147, 2341-415
BK 31 PG 2148-2152, 2341-416
BK 31 PG 2153-2157, 2341-417
BK 31 PG 2158-2162, 2341-418
BK 31 PG 2163-2167, 2341-419
BK 31 PG 2168-2172, 2341-420
BK 31 PG 2173-2177, 2341-421
BK 31 PG 2178-2182, 2341-422
BK 31 PG 2183-2187, 2341-423
BK 31 PG 2188-2192, 2341-424
BK 31 PG 2193-2197, 2341-425
BK 31 PG 2198-2202, 2341-426
BK 31 PG 2203-2207, 2341-427
BK 31 PG 2208-2212, 2341-428
BK 31 PG 2213-2217, 2341-429
BK 31 PG 2218-2222, 2341-430
BK 31 PG 2223-2227, 2341-431
BK 31 PG 2228-2232, 2341-432
BK 31 PG 2233-2237, 2341-433
BK 31 PG 2238-2242, 2341-434
BK 31 PG 2243-2247, 2341-435
BK 31 PG 2248-2252, 2341-436
BK 31 PG 2253-2257, 2341-437
BK 31 PG 2258-2262, 2341-438
BK 31 PG 2263-2267, 2341-439
BK 31 PG 2268-2272, 2341-440
BK 31 PG 2273-2277, 2341-441
BK 31 PG 2278-2282, 2341-442
BK 31 PG 2283-2287, 2341-443
BK 31 PG 2288-2292, 2341-444
BK 31 PG 2293-2297, 2341-445
BK 31 PG 2298-2302, 2341-446
BK 31 PG 2303-2307, 2341-447
BK 31 PG 2308-2312, 2341-448
BK 31 PG 2313-2317, 2341-449
BK 31 PG 2318-2322, 2341-450
BK 31 PG 2323-2327, 2341-451
BK 31 PG 2328-2332, 2341-452
BK 31 PG 2333-2337, 2341-453
BK 31 PG 2338-2342, 2341-454
BK 31 PG 2343-2347, 2341-455
BK 31 PG 23

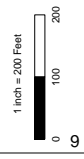
ASSESSMENT DIAGRAM

NIPOMO MESA
SUPPLEMENTAL
ASSESSMENT DISTRICT
NO.1

NIPOMO COMMUNITY
SERVICES DISTRICT
STATE OF CALIFORNIA

Legend

-  ASSESSOR PARCEL
-  ASSESSOR BOUNDARY
-  DIAGRAM SHEET

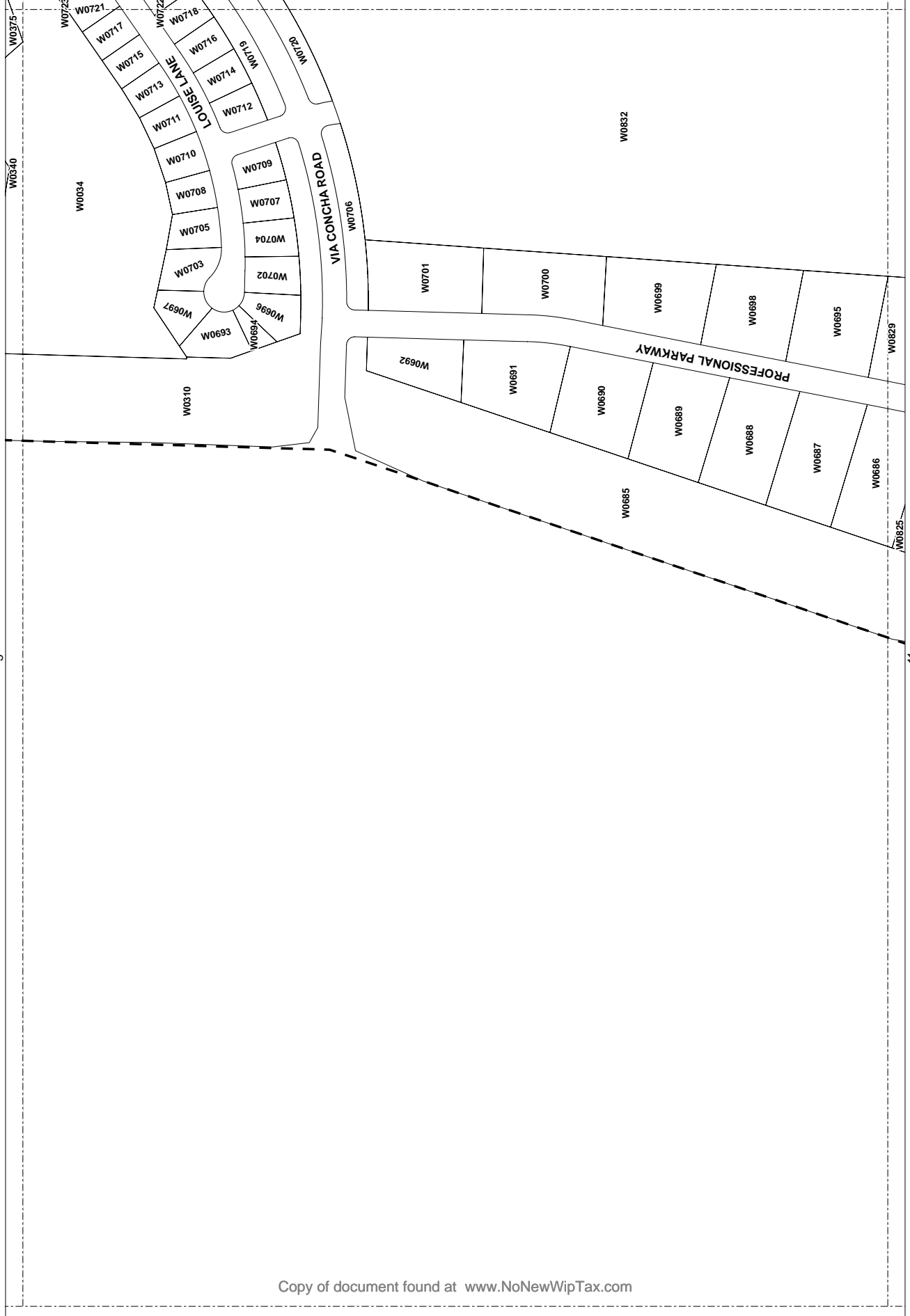


SHEET:
8 OF 12



LOTS ON THIS SHEET ARE
BASED ON ASSESSOR'S
MAP COUNTY OF SAN LUIS
OBISPO COUNTY, CALIFORNIA
500-502, 503, 504, 505, 506,
507, 508, 509, 600, 601, 602,
603, 604, 605, 606, 607, 608,
609, 610, 701, 702, 703,
704, 705, 706.

LOTS SHOWN ON THIS
SHEET ARE NOT THE
WOODLAND TRACTS: 2341-1
BK 28 PG 14-41, 2341-2 BK 27
PG 89-93, 2341-3 BK 30 PG
105-109, 2341-4 BK 31 PG
2341-5 BK 31 PG 35-42, 2758
BK 31 PG 15-16, LOS
BERNOS TRACT BKA
PG 108.






**ASSESSMENT
DIAGRAM**

NIPOMO MESA
SUPPLEMENTAL
ASSESSMENT DISTRICT
NO.1

NIPOMO COMMUNITY
SERVICES DISTRICT
STATE OF CALIFORNIA

Legend

-  ASSESSOR PARCEL
-  ASSESSOR BOUNDARY
-  DIAGRAM SHEET



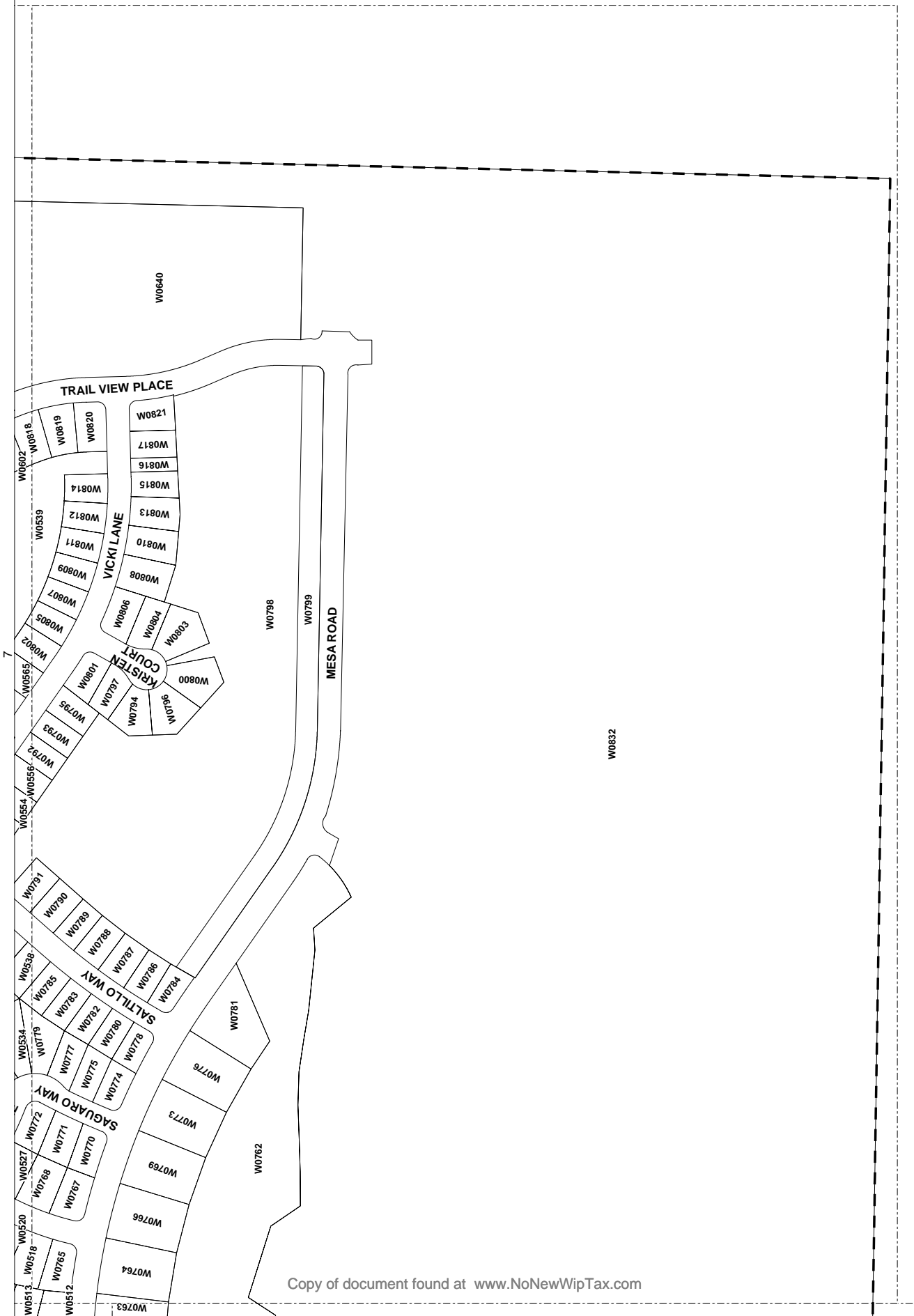
1 Inch = 200 Feet
0 100 200

**SHEET:
10 OF 12**



LOTS ON THIS SHEET ARE
BASED ON ASSESSOR'S
MAP COUNTY OF SAN LUIS
OBISPO COUNTY
507 508 509 500 601 602
503 604 605 606 607 608
609 610 611 701 702 703
704 705 706

LOTS SHOWN ON THIS
SHEET ARE NOT THE
WOODLAND TRACTS: 2341-1
BK 26 PG 14-41, 2341-2 BK 27
PG 89-93, 2341-3 BK 30 PG
14-16, 2341-4 BK 31 PG 40-
2341-5 BK 31 PG 38-42, 2759
BK 31 PG 15-16, LOS
BERNOS TRACT BKA
PG 108






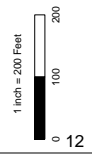
**ASSESSMENT
DIAGRAM**

NIPOMO MESA
SUPPLEMENTAL
EVALUATION DISTRICT
ASSESSMENT DISTRICT
NO.1

NIPOMO COMMUNITY
SERVICES DISTRICT
STATE OF CALIFORNIA

Legend

-  ASSESSOR PARCEL
-  ASSESSOR PARCEL
-  ASSESSOR PARCEL
-  DIAGRAM SHEET

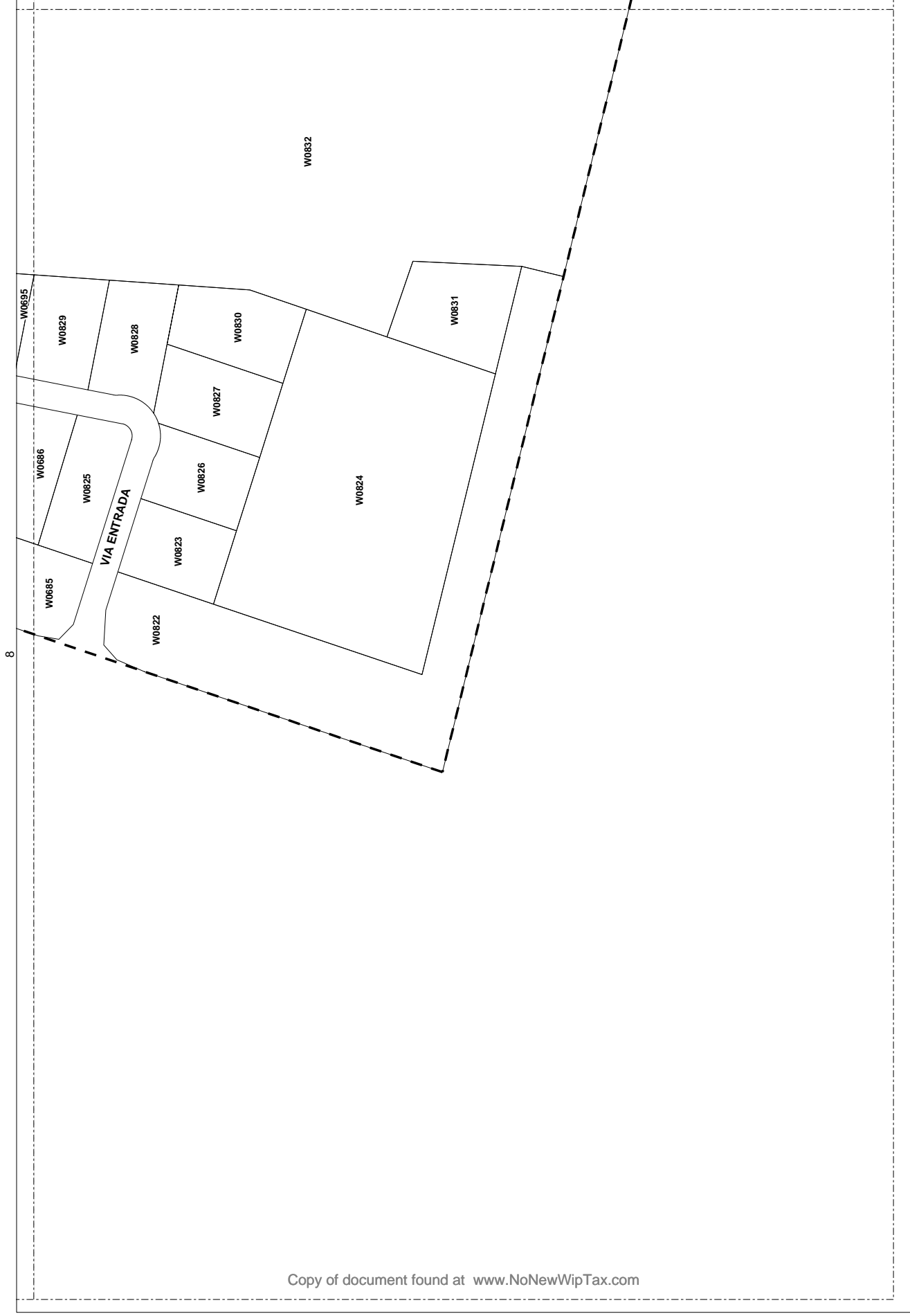


**SHEET:
11 OF 12**



LOTS ON THIS SHEET ARE
BASED ON ASSESSOR'S
MAP COUNTY OF SAN LUIS
OBISPO COUNTY RECORDS:
507 508 509 500 601 602
503 604 605 606 607 608
609 610 611 701 702 703
704 705 706

LOTS SHOWN ON THIS
SHEET ARE NOT THE
WOODLAND TRACTS: 2341-1
BK 26 PG 14-41, 2341-2 BK 27
PG 89-93, 2341-3 BK 30 PG
85-88, 2341-4 BK 31 PG
2341-5 BK 31 PG 35-42, 2758
BK 31 PG 15-16, LOS
BERNOS TRACT BKA
PG 108



ASSESSMENT DIAGRAM

NIPOMO MESA
SUPPLEMENTAL
ASSESSMENT DISTRICT
NO.1

NIPOMO COMMUNITY
SERVICES DISTRICT
STATE OF CALIFORNIA

Legend

-  ASSESSOR PARCEL
-  ASSESSOR BOUNDARY
-  DIAGRAM SHEET



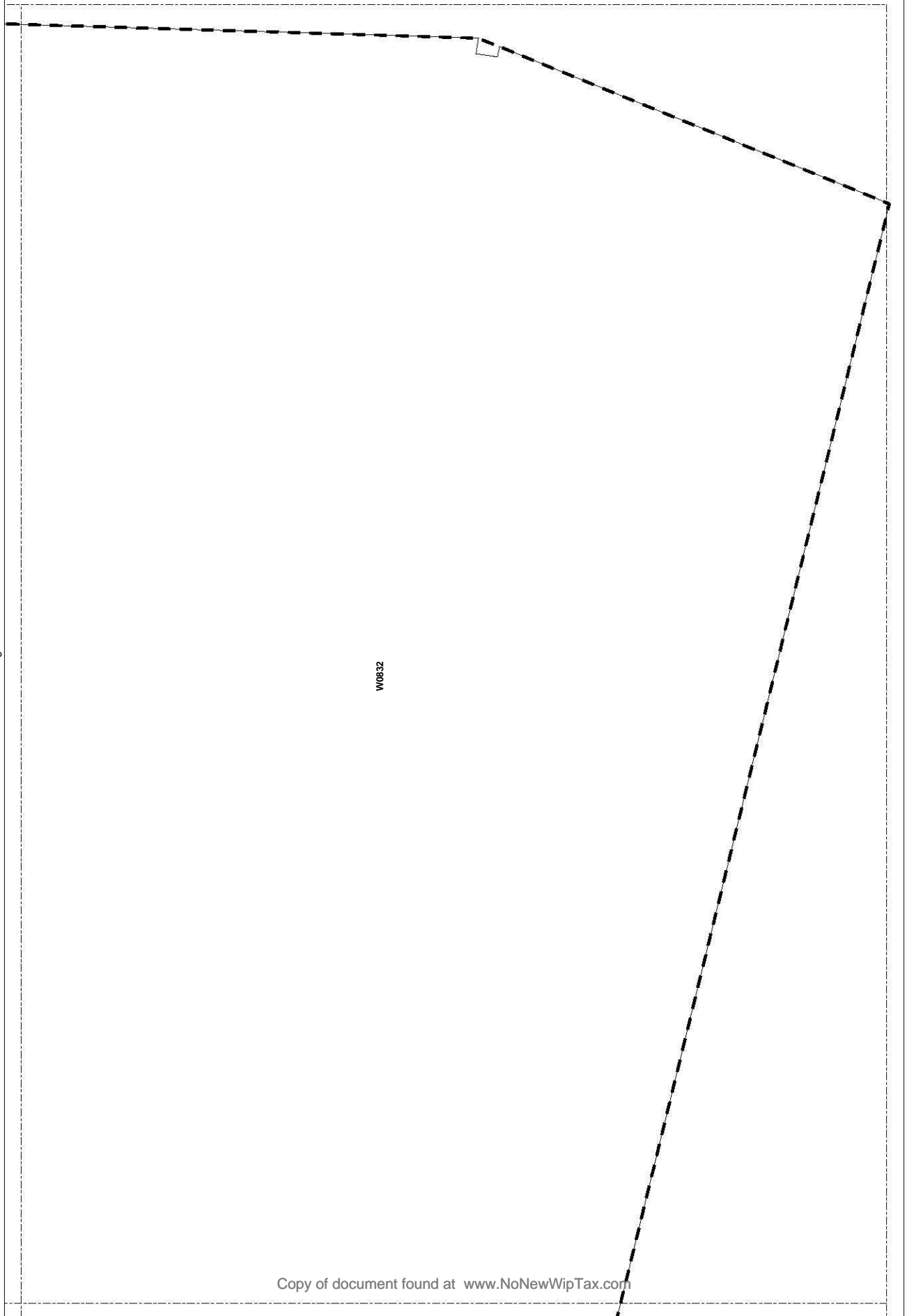
1 Inch = 200 Feet
0 100 200

**SHEET:
12 OF 12**



LOTS ON THIS SHEET ARE
BASED ON ASSESSOR'S
MAP COUNTY OF SAN LUIS
OBISPO COUNTY, CALIFORNIA
507 508 509 500 601 602
603 604 605 606 607 608
609 610 611 701 702 703
704 705 706

LOTS SHOWN ON THIS
SHEET ARE NOT THE
WOODLAND TRACTS: 2341-1
BK 28 PG 14-41, 2341-2 BK 27
PG 89-93, 2341-3 BK 30 PG
14-16, 2341-4 BK 31 PG 35-42, 2759
BK 31 PG 15-16, LOS
BERNOS TRACT BKA
PG 108



W00332