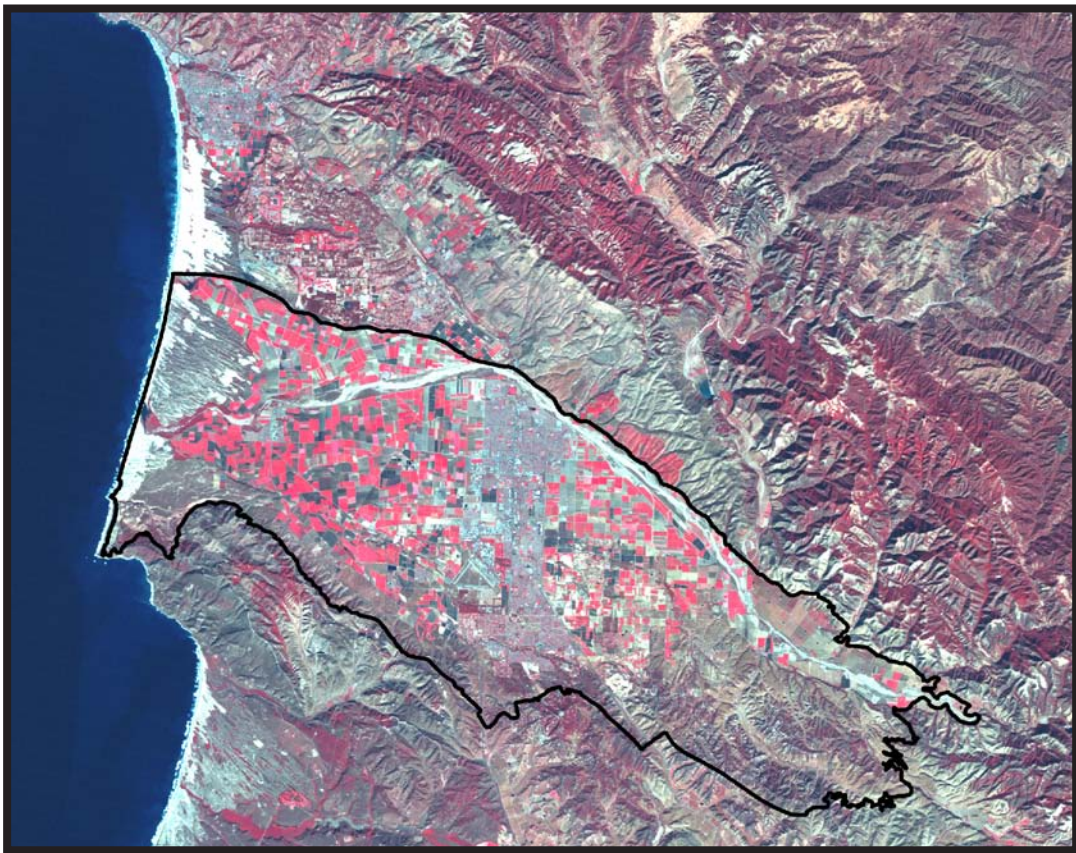


2008 Annual Report of Hydrogeologic Conditions, Water Requirements, Supplies and Disposition

Santa Maria Valley Management Area



Luhdorff and Scalmanini
Consulting Engineers

April, 2009

2008 Annual Report of Hydrogeologic Conditions Water Requirements, Supplies, and Disposition

Santa Maria Valley Management Area



prepared by

Luhdorff and Scalmanini
Consulting Engineers

April, 2009

Table of Contents

	Page
1. Introduction.....	1
1.1 Physical Setting	1
1.2 Previous Studies.....	2
1.3 SMVMA Monitoring Program	2
1.4 Report Organization.....	4
2. Hydrogeologic Conditions.....	5
2.1 Groundwater Conditions.....	5
2.1.1 Geology and Aquifer System.....	5
2.1.2 Groundwater Levels.....	8
2.1.3 Groundwater Quality	9
2.2 Twitchell Reservoir Operations	11
2.2.1 Reservoir Stage and Storage	11
2.2.2 Reservoir Releases	12
2.3 Streams.....	12
2.3.1 Discharge	12
2.3.2 Surface Water Quality.....	14
2.4 Climate.....	15
2.4.1 Precipitation	16
2.4.2 Evapotranspiration	16
3. Water Requirements and Water Supplies.....	17
3.1 Agricultural Water Requirements and Supplies	17
3.1.1 Land Use	17
3.1.2 Applied Crop Water Requirements.....	18
3.1.3 Total Agricultural Water Requirements.....	19
3.1.4 Agricultural Groundwater Pumping	20
3.2 Municipal Water Requirements and Supplies.....	20
3.2.1 Municipal Groundwater Pumping.....	20
3.2.2 Imported Water	21
3.2.3 Total Municipal Water Requirements.....	22
3.3 Total Water Requirements and Supplies.....	22
4. Water Disposition	23
4.1 Agricultural Return Flows	23
4.2 Treated Municipal Waste Water Discharge.....	24
4.3 Exported Water	26
5. Conclusions and Recommendations.....	27
5.1 Conclusions.....	27
5.2 Recommendations.....	29

Table of Contents, cont.

	Page
6. References	32

Appendices

Appendix A	SMVMA Monitoring Program
Appendix B	Progressive Images of Twitchell Reservoir Surface Area, 2008
Appendix C	Satellite Images of SMVMA in 2008

List of Figures

- 1.1-1 Santa Maria Valley Groundwater Basin and Management Area

- 1.3-1a Well Network for Monitoring Shallow Groundwater
- 1.3-1b Well Network for Monitoring Deep Groundwater
- 1.3-2 Surface Water and Climatic Monitoring Network

- 2.1-1a Generalized Geologic Map with Cross Section Locations
- 2.1-1b Longitudinal Geologic Cross Section, A-A'
- 2.1-1c Transverse Geologic Cross Section, B-B'
- 2.1-2 Historical Groundwater Level Fluctuations
- 2.1-3a Contours of Equal Groundwater Elevation, Shallow Zone, Spring 2008
- 2.1-3b Contours of Equal Groundwater Elevation, Deep Zone, Spring 2008
- 2.1-4 Historical Groundwater Quality Fluctuations

- 2.2-1a Historical Stage and Storage, Twitchell Reservoir
- 2.2-1b Historical Releases, Twitchell Reservoir

- 2.3-1a Historical Surface Water Discharge, Cuyama River and Twitchell Reservoir
- 2.3-1b Historical Stream Discharge, Sisquoc River
- 2.3-1c Historical Stream Discharge, Santa Maria River
- 2.3-1d Historical Stream Discharge, Orcutt Creek
- 2.3-2a Historical Surface Water Quality, Sisquoc River
- 2.3-2b Historical Surface Water Quality, Orcutt Creek

- 2.4-1 Historical Precipitation, Santa Maria Airport
- 2.4-2 Historical Reference Evapotranspiration, CIMIS Stations

- 3.1-1a Agricultural Land Use, 2008
- 3.1-1b Historical Distribution of Irrigated Acreage, by Crop Category
- 3.1-1c Historical Agricultural Acreage and Groundwater Pumpage

- 3.2-1 Historical Municipal Groundwater Pumpage

List of Tables

- 1.3-1a Well Network for Monitoring Shallow Groundwater
- 1.3-1b Well Network for Monitoring Deep Groundwater
- 1.3-1c Unclassified Wells for Groundwater Monitoring

- 2.3.1 Selected General Mineral Constituent Concentrations, Cuyama River

- 2.4-1 Precipitation Data, 2008, Santa Maria Airport
- 2.4-2 Reference Evapotranspiration and Precipitation Data, 2008, Nipomo and Sisquoc CIMIS Stations

- 3.1-1a Distribution of Irrigated Acreage, 2008
- 3.1-1b Historical Distribution of Irrigated Acreage
- 3.1-1c Applied Crop Water Duties and Agricultural Water Requirements, 2008

- 3.2-1a Municipal Groundwater Pumpage, 2008
- 3.2-1b Municipal Surface Water Deliveries, 2008

- 3.3-1 Total Water Requirements and Supplies, 2008

- 4.1-1 Applied Crop Water Duties, Agricultural Water Requirements and Return Flows, 2008

- 4.2-1 Treated Municipal Waste Water Discharge, 2008

- 5.1-1 Summary of 2008 Water Requirements, Water Supplies and Disposition

Acronyms and Abbreviations

af, afy, af/ac	acre-feet, acre-feet per year, acre-feet/acre
AW	applied water
CCRWQCB	Central Coast Regional Water Quality Control Board
CCWA	Central Coast Water Authority
CIMIS	California Irrigation Management Information System
DU	Distribution Uniformity
DWR	California Department of Water Resources
ET	evapotranspiration
ET _{aw} , ET _c , ET _o	ET of applied water, ET of the crop, reference ET
Fm.	formation
GIS	Geographic Information System
GSWC	Golden State Water Company
K _c	crop coefficient
LSCE	Luhdorff & Scalmanini Consulting Engineers
mg/l	milligrams per liter
MOU	Memorandum of Understanding
Nipomo CSD	Nipomo Community Services District
NMMA	Nipomo Mesa Management Area
NMMA TG	Nipomo Mesa Management Area Technical Group
NO ₃ -NO ₃	nitrate-as-nitrate
NOAA	National Oceanic and Atmospheric Administration
P _E	effective precipitation
SBCWA	Santa Barbara County Water Agency
SCWC	Southern California Water Company
SMVMA	Santa Maria Valley Management Area
SMVWCD	Santa Maria Valley Water Conservation District
SWP	State Water Project
TMA	Twitchell Management Authority
UCCE	University of California Cooperative Extension
USGS	United States Geological Survey
umho/cm	micromhos per centimeter
WRP	water reclamation plant
WWTP	waste water treatment plant