



## KOCH CALIFORNIA LTD.

662 Eucalyptus Rd., Box 1127

Nipomo, California 93444

Phone (805) 929-4153

Fax (805) 929-5598

August 9th 1995

Glen Britten  
San Luis Obispo County Engineering Department  
County Government Center, Room 207  
San Luis Obispo, Ca 93408  
(805) 781-5252  
(805) 781-12~~09~~<sup>2</sup> fax

Dear Glen Britten:

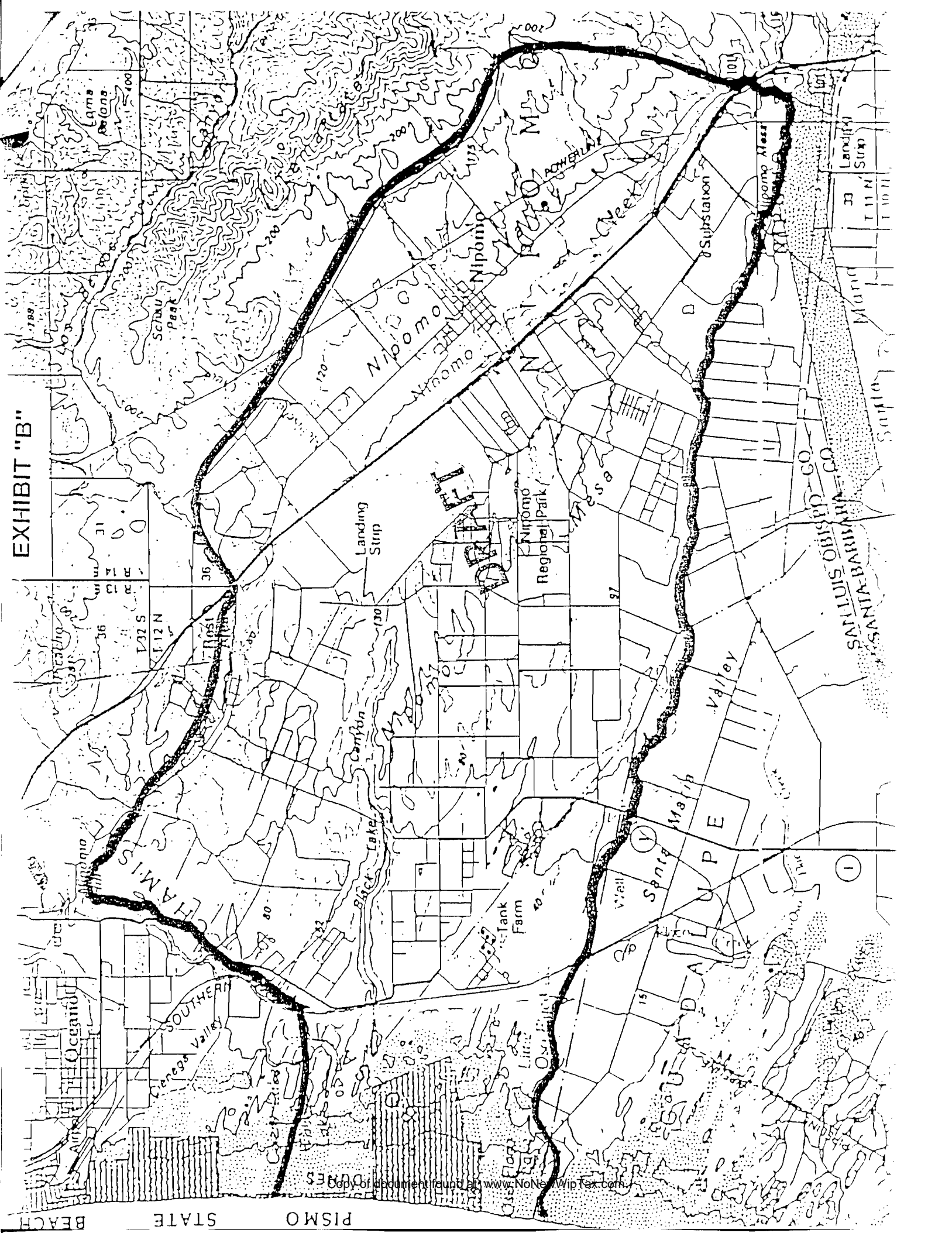
Thank you for talking to me about the water table in the Nipomo area. I am looking for the standing water levels from 1900 to 1995 and locations of the test wells uses in the county and in the DWR 1979 and 1997 studies. If some of this information requires a release form from the well owners I would like the information on how to contact them.

In general we are trying to confirm the status of the water under the Nipomo Mesa.

Thank You

John Snyder  
Vice President

EXHIBIT "B"



BEACH

PISMO STATE

Copy of document found at www.NoNewWipTex.com

# SAN LUIS OBISPO COUNTY

# ENGINEERING DEPARTMENT

COUNTY GOVERNMENT CENTER • ROOM 207 • SAN LUIS OBISPO, CALIFORNIA 93408

TIMOTHY P. HANSON  
COUNTY ENGINEER

PHONE (805) 781-5252 • FAX (805) 781-1229

GLEN L. PRIDDY  
DEPUTY COUNTY ENGINEER  
ENGINEERING SERVICES

NOEL KING  
DEPUTY COUNTY ENGINEER  
ADMINISTRATION



ROADS  
SOLID WASTE  
FRANCHISE ADMINISTRATION  
WATER RESOURCES  
COUNTY SURVEYOR  
SPECIAL DISTRICTS

September 27, 1995

Attn John Snyder  
Koch California Ltd  
662 Eucalyptus Rd, Box 1127  
Nipomo CA 93444

Subject: Nipomo Area Well - Ground Water Information

Dear Mr. Snyder:

Per your request, attached is a well location map for the Nipomo vicinity.

To find out about the Department of Water Resources studies, currently published or being published, contact: Department of Water Resources, Krista Klasson, Southern District Office, 770 Fairmont Avenue, P. O. Box 29068, Glendale, California 9122203-1035. Their phone number is 1-818-543-4600, extension 232.

In regards to other ground water information and data, contact Doug Jones at the Nipomo Community Services District and Cal Cities Water Department for information regarding their wells.

If you have any questions, please feel free to contact Glenn Britton or me at 781-5252.

Sincerely,



PAUL G. HILLIARD  
Hydraulic Division

Enclosure

File: B-Misc/Basic Data

m:\shirley\ph\snydr.ltr

San Luis Obispo County  
Flood Control and Water Conservation District / Engineering Department  
Well Data Release Policy

The County Flood Control and Water Conservation District maintains information on wells in the County including a list of wells with state well numbers and files on other wells. The list of state well numbers is available to the public. The state well numbering system provides the general location of the well. The District also has files of wells not in the state well numbering system. These files are not available to the public as they also provide well log information. The Environmental Health Department maintains a well database and is responsible for the collection of well log information.

The District's policy is not to release to the public well log or well level information collected from private property owners. Well log and well level information is released to other local, state, and federal agencies with the condition that the information is not released to the public. This policy is based upon years of verbal and written agreements between the Flood Control District's agents and property owners as well as specific legal language in California Water Code 13751, 13752 and California Government Code 6250, 6254 (e), 6254.5, and section 6255.

Water Code 13751 states that for every person who digs, bores, or drills a water well, cathodic protection well, or a monitoring well, or abandons or destroys any such well, or deepens or re-perforates any such well, shall file with the Environmental Health Department a detailed report.

Water Code 13752 states that said reports in Water Code 13751 shall not be made available for inspection by the public but shall be made available to governmental agencies.

Water Code 13752 also states that any report shall be made available to any person who obtains a written authorization from the owner of the well.

Government Code 6250, "finds and declares that access to information concerning the conduct of the people's business is a fundamental and necessary right of every person in this state."

The provisions of section 6254(e) exempt geological and geophysical data from disclosure.

Section 6254.5 (e) describes the disclosure of otherwise exempt records made to any governmental agency which agrees to treat the disclosed material as confidential.

With regard to section 6255, the Engineering Department takes the position that it is only by agreeing to maintain in confidence the water level information provided to the Department by private land owners will the Department be able to obtain that information from many land owners. That is to say, the land owners who own the water wells which the County monitors, allow the County Engineer to monitor the water levels only on the condition that the information be kept confidential by the Engineering Department. Consequently, the Engineering Department also relies on section 6255 of the Act which exempts from the disclosure requirement those records which, in the facts of the particular case, the public interest served by not making the record public clearly outweighs the public interest served by disclosure of the record.

STATE OF CALIFORNIA  
DEPARTMENT OF WATER RESOURCES

CAL  
7.5

SAN LUIS OBISPO 15 MI  
PISMO BEACH 3.4 MI

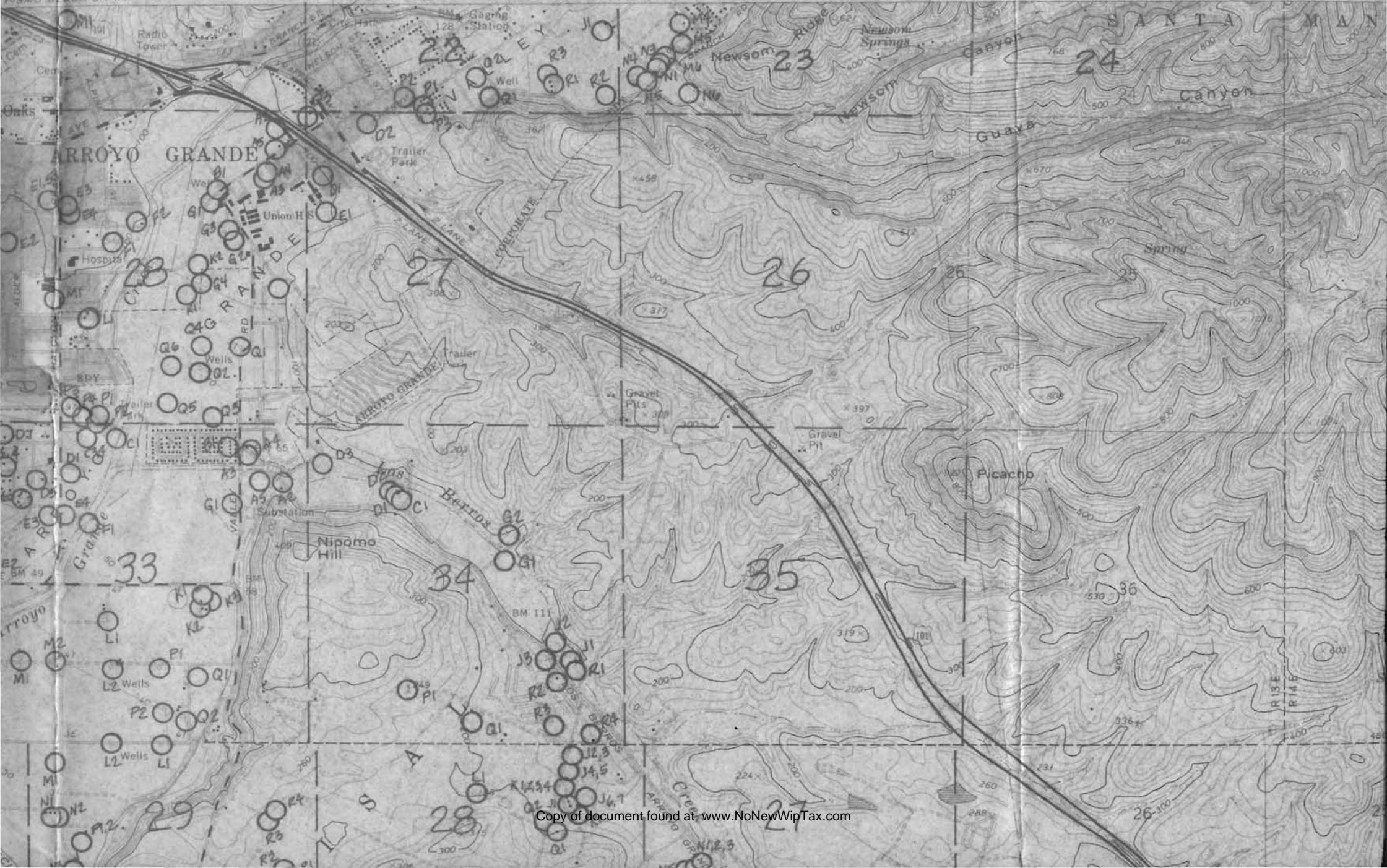
EDNA 7 MI  
1854 II NE  
(ARROYO GRANDE NE)

723

32'30"

725

R 13E R 14E



OCEANO QUADRANGLE  
CALIFORNIA—SAN LUIS OBISPO CO.  
7.5 MINUTE SERIES (TOPOGRAPHIC)

1864 H. HW  
17AR SPRING RIDGE

SOURCES

1854 H. NE  
YO GRANDE NEJ

123 32'30" 125 R 13 E R 14 E 127 1 250 000 FEET 120°30' 35°07'30"



600 000  
FEET

3889

3888

3887

3886

T 32 S

T 12 N

82

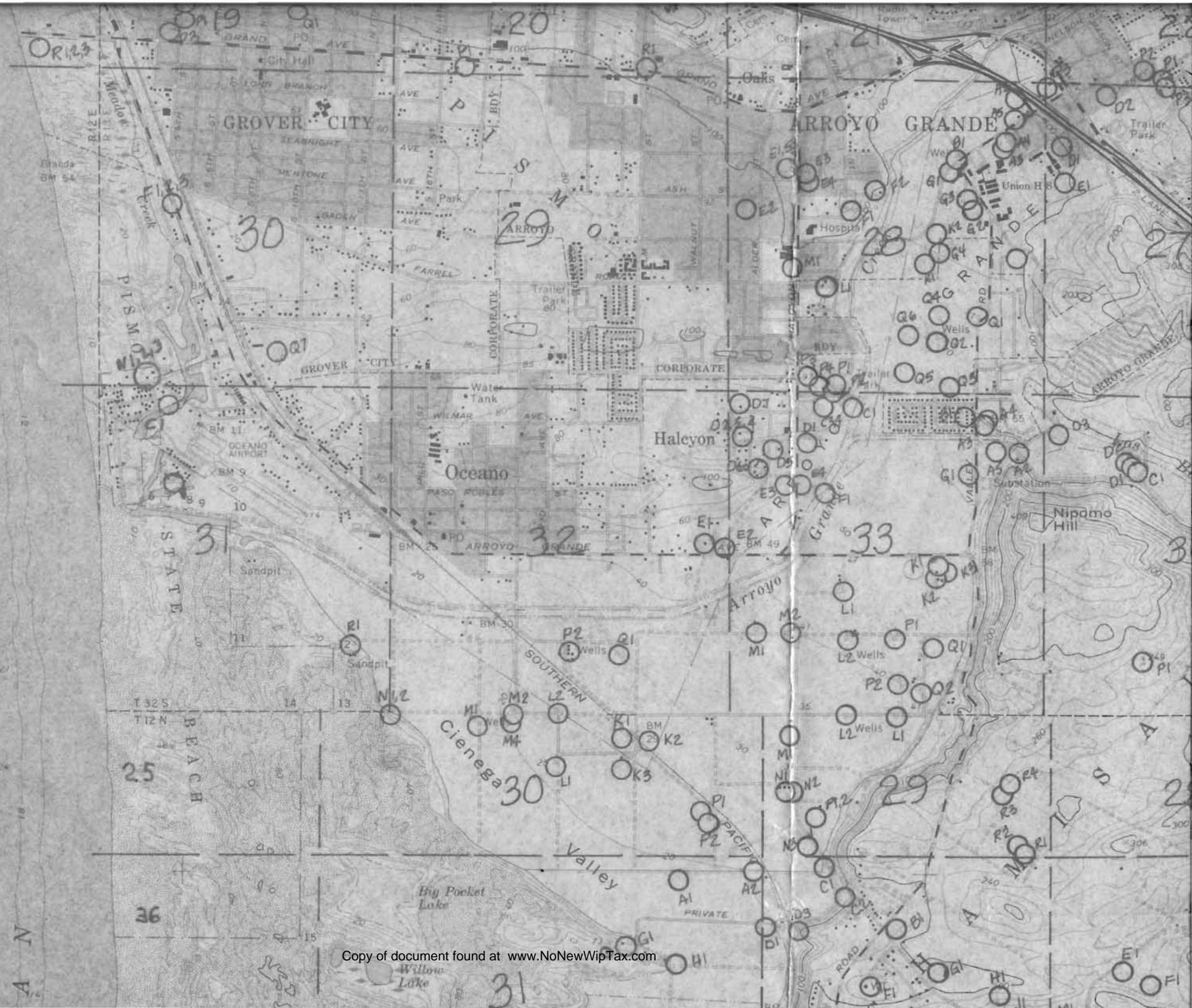
UNITED STATES  
DEPARTMENT OF THE INTERIOR  
GEOLOGICAL SURVEY

STATE OF CALIFORNIA  
DEPARTMENT OF WATER

120° 38' 30" 1854 11 NW (PISMO BEACH) 716 0000 E PISMO BEACH 1.3 MI 37' 30" 717 718 719 SAN LUIS OBISPO 15 MI PISMO BEACH 3.4 MI 20 35'



36  
3888  
3887  
3886  
3885  
5'  
3884









3883  
3882  
3881  
2'30"  
3879

PACIFIC

T12N  
T11N

L1,2

C1,2,3

12

13

Hospital Lake

Big Twin Lake

White Lake

Mud Lake

Black Lake

Jack Lake

Lettuce Lake

Little Oso Flaco Lake

Oso Flaco Lake

Pipeline Lake

Pumping Sta

Small Twin Lake

Bolsa Chica Lake

Callender

Oil Refinery

Conveyor Belt

Cake Ovens

Trailer Park

Substation

PIPELINE

SOUTHERN







35°00' 120°38'30" 1 210 000 FEET (POINT SAL) 1953 I NW 37°30' 717 718 719 720 35' 721

Mapped, edited, and published by the Geological Survey  
Control by USGS and NOS/NOAA

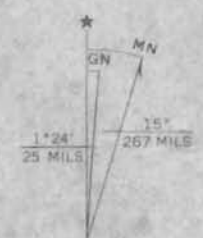
Topography by photogrammetric methods from aerial  
photographs taken 1963. Field checked 1965

Selected hydrographic data compiled from NOS/NOAA surveys (1934)  
This information is not intended for navigational purposes.

Polyconic projection. 1927 North American datum  
10,000-foot grid based on California coordinate system, zone 5  
1000-meter Universal Transverse Mercator grid ticks,  
zone 10, shown in blue

Red tint indicates areas in which only landmark buildings are shown  
Fine red dashed lines indicate selected fence lines

**R36W R35W**

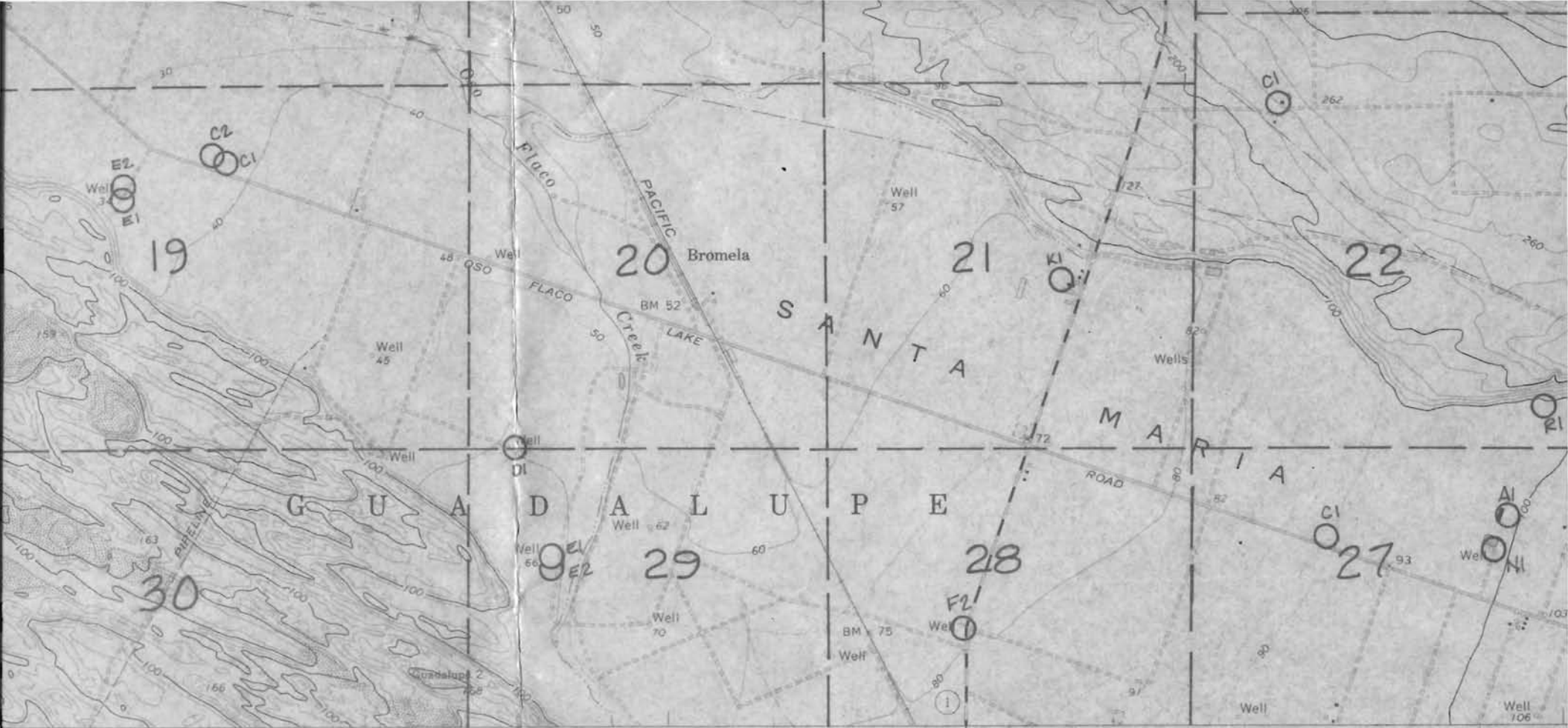


UTM GRID AND 1979 MAGNETIC NORTH DECLINATION AT CENTER OF SHEET



CONTOUR INTERVAL  
DOTTED LINES REPRESENT  
NATIONAL GEODETIC VERTICAL  
DEPTH CURVES AND SOUNDINGS IN FEET—D  
SHORELINE SHOWN REPRESENTS THE APPROXIMATE  
THE MEAN RANGE OF TIDE IS APPROXIMATELY

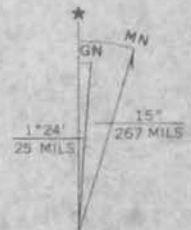
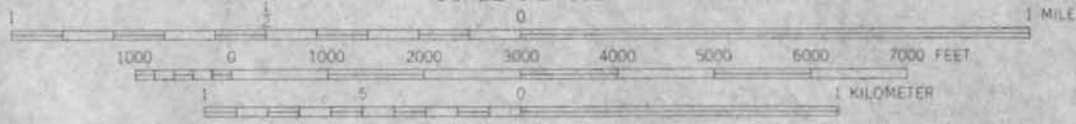
THIS MAP COMPLIES WITH NATIONAL  
FOR SALE BY U. S. GEOLOGICAL SURVEY, DENVER, COLO.  
A FOLDER DESCRIBING TOPOGRAPHIC MAPS AND



718 719 720 35' 721 722 (GUADALUPE) 1853 1 NE 723 724 32'3

GUADALUPE 2 MI.  
26 MI. TO U.S. 101

SCALE 1:24 000

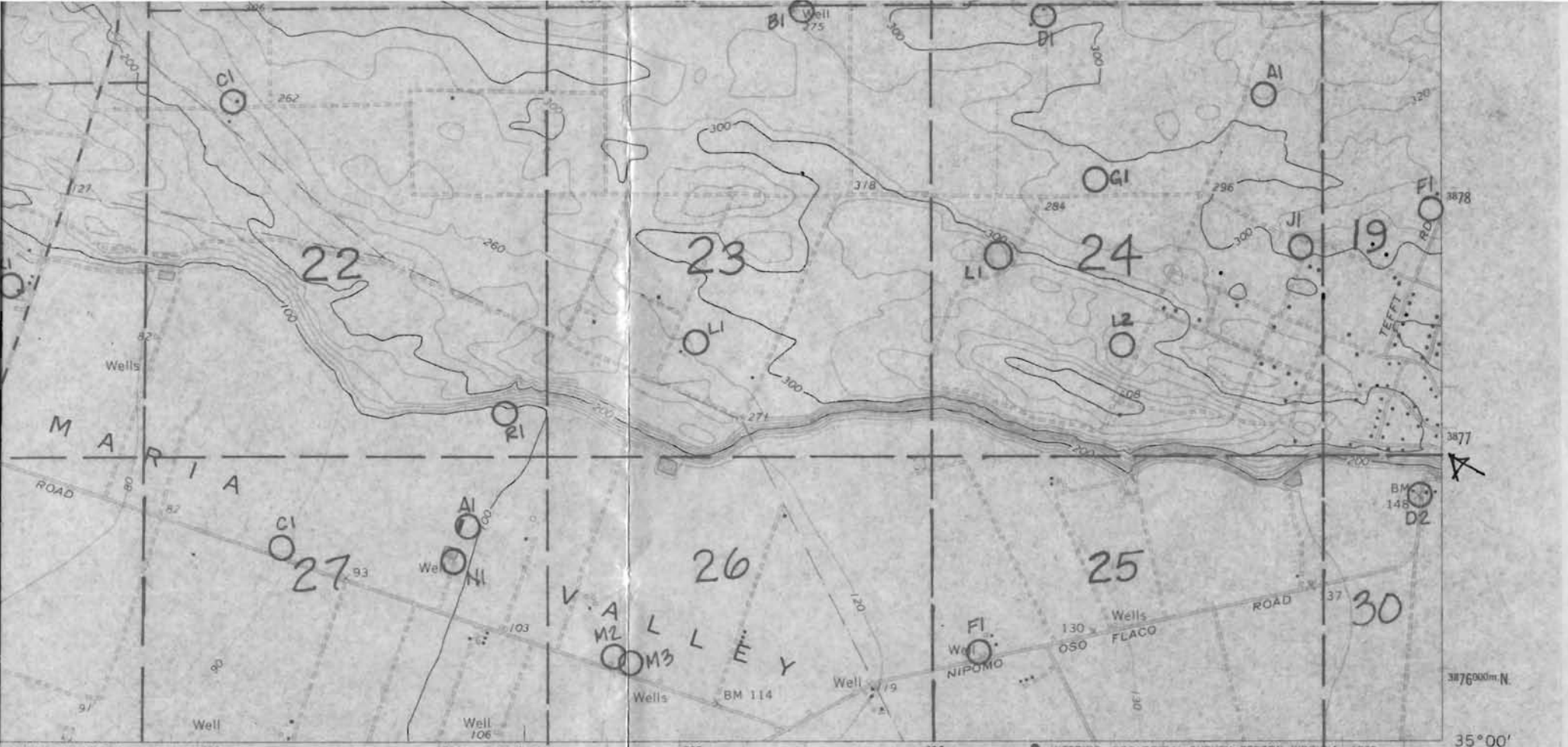


UTM GRID AND 1979 MAGNETIC NORTH DECLINATION AT CENTER OF SHEET

CONTOUR INTERVAL 20 FEET  
 DOTTED LINES REPRESENT 10-FOOT CONTOURS  
 NATIONAL GEODETIC VERTICAL DATUM OF 1929  
 DEPTH CURVES AND SOUNDINGS IN FEET—DATUM IS MEAN LOWER LOW WATER  
 SHORELINE SHOWN REPRESENTS THE APPROXIMATE LINE OF MEAN HIGH WATER  
 THE MEAN RANGE OF TIDE IS APPROXIMATELY 4 FEET

THIS MAP COMPLIES WITH NATIONAL MAP ACCURACY STANDARDS  
 FOR SALE BY U. S. GEOLOGICAL SURVEY, DENVER, COLORADO 80225, OR RESTON, VIRGINIA 22092  
 A FOLDER DESCRIBING TOPOGRAPHIC MAPS AND SYMBOLS IS AVAILABLE ON REQUEST

Revisions shown  
 aerial photograph  
 Map edited 1979



(GUADALUPE) 1853 I NE



CONTOURS  
OF 1929  
MEAN LOWER LOW WATER  
MEAN HIGH WATER  
4 FEET

STANDARD  
225. OR RESTON, VIRGINIA 22092  
IS AVAILABLE ON REQUEST



Revisions shown in purple compiled by the Geological Survey from aerial photographs taken 1976. This information not field checked  
Map edited 1979

**R35W R34W**  
ROAD CLASSIFICATION  
Heavy-duty ——— Light-duty ———  
Medium-duty - - - - - Unimproved dirt - - - - -  
□ U. S. Route      ○ State Route

**OCEANO, CALIF.**  
N3500—W12030/7.5 X 8.5  
1965  
PHOTOREVISED 1979  
AMS 1854 II SE—SERIES V895