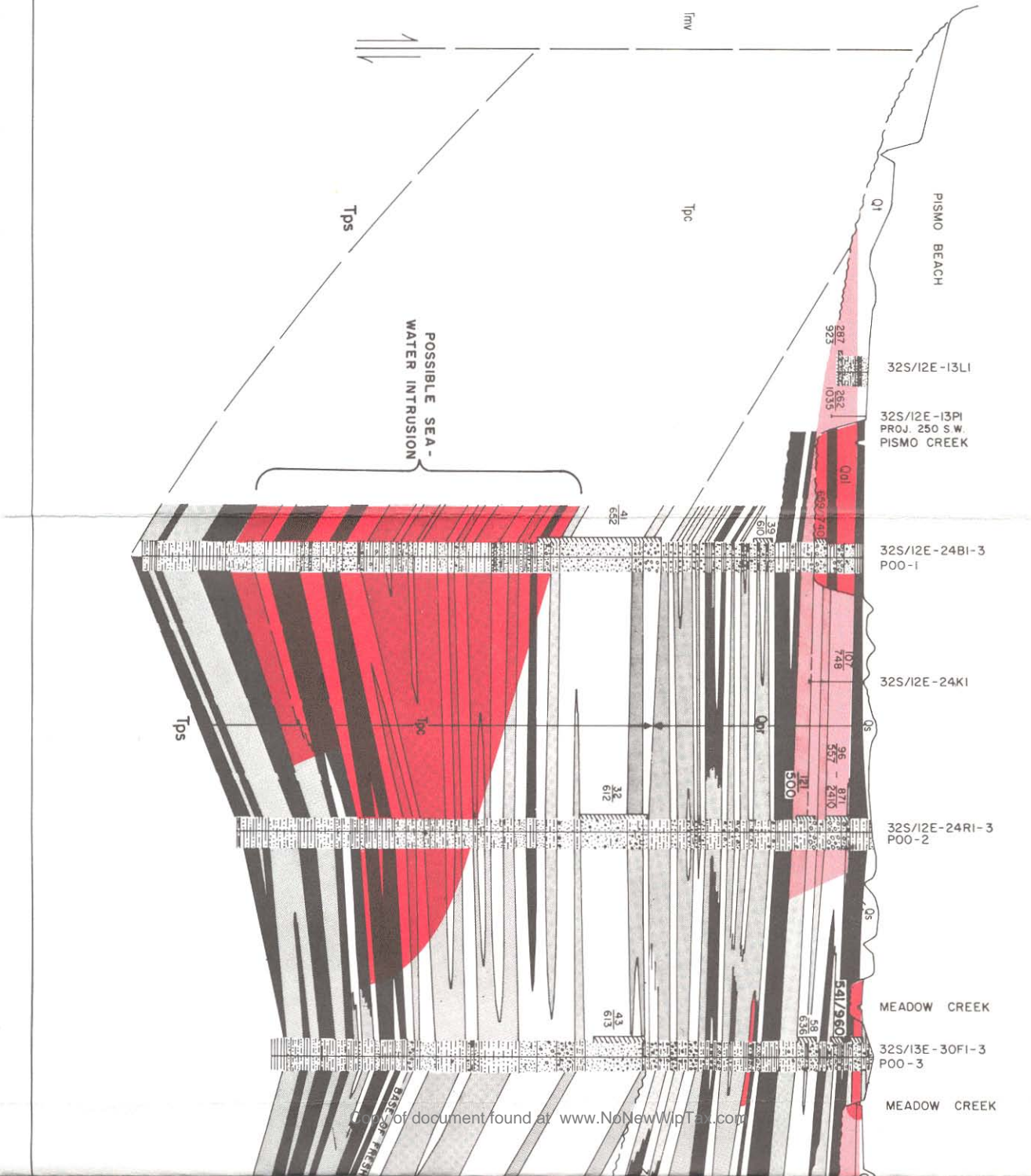


ELEVATION IN FEET - U S G S DATUM

NORTH
A



POSSIBLE SEA-WATER INTRUSION

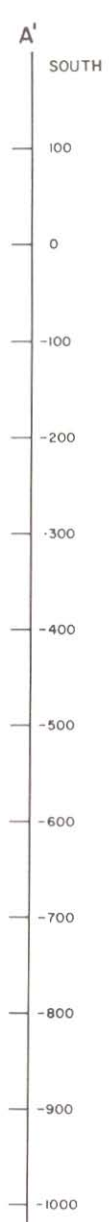
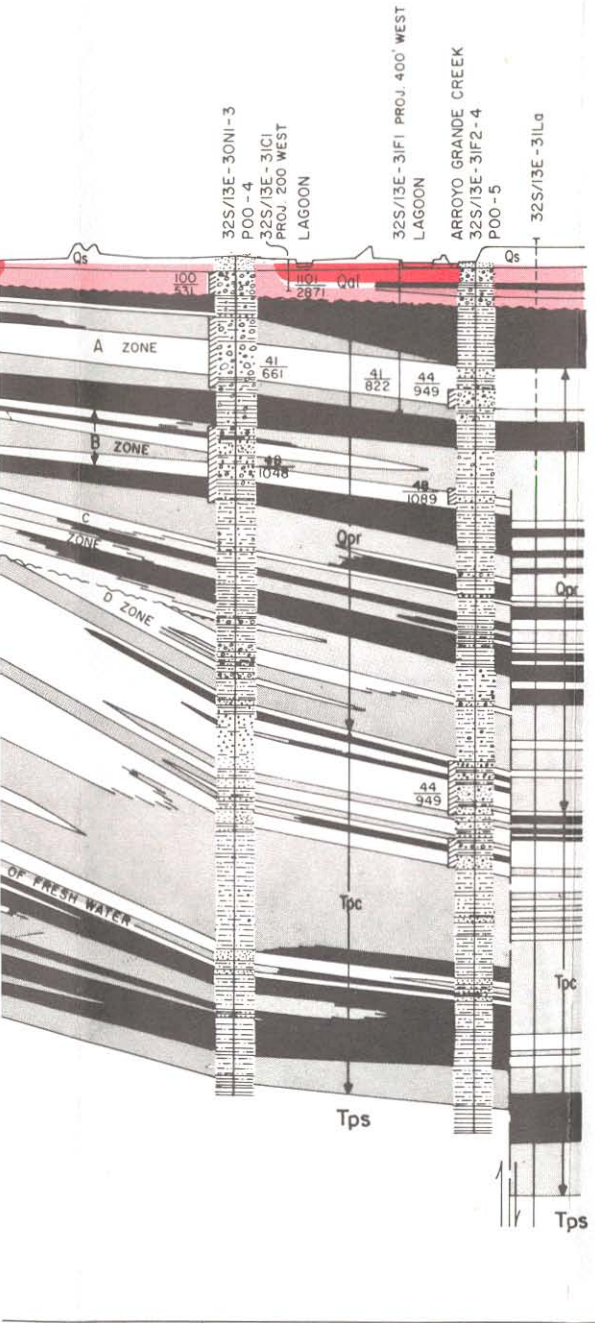
Tps

Tpc

Tmv

Tps

Tpc



+

LEGEND

HYDROGEOLOGIC UNITS



AQUIFER UNCONSOLIDATED SAND OR GRAVEL, RELATIVELY CLEAN. Tpc UNCONSOLIDATED TO WEAKLY CEMENTED WITH HARD SANDSTONE LEDGES.



SILTY TO CLAYEY FINE - MEDIUM SAND, FINE - COURSE SAND OR GRAVEL AND SILT - CLAY. UNCONSOLIDATED TO WEAKLY CEMENTED.



AQUICLUDE UNCONSOLIDATED TO WEAKLY CEMENTED CLAYEY SILT TO SILTY CLAY WITH MINOR SAND OR GRAVEL.

CHLORIDE ION CONCENTRATIONS



LESS THAN 100 PPM



100 TO 500 PPM



GREATER THAN 500 PPM

200
900



PERFORATED INTERVAL OF WELLS AND CHLORIDE ION CONCENTRATION IN PPM / TOTAL DISSOLVED SOLIDS IN PPM DATA FOR FALL 1967 DWR PIEZOMETERS.

WELLS AND SUBSURFACE GEOLOGIC DATA

11N/36W-7A1

WATER WELL WITH DRILLER'S LOG.

32S/13E-24B1-3
P00-1

DWR MULTIPLE PIEZOMETER GROUP WITH LITHOLOGIC LOG AND ELECTRIC LOG. PIEZOMETER SITES ASSIGNED FIELD NUMBERS:

- P00-1 TO P00-5 PISMO - OCEANO OBSERVATION
- OF0-1 OSO FLACO LAKE OBSERVATION
- GO-1 AND GO-2 GUADALUPE OBSERVATION

11N/36W-35Jb

OIL WELL WITH ELECTRIC LOG. DASHED ABOVE RECORD

GEOLOGIC SYMBOLS



GRAVEL



COARSE SAND

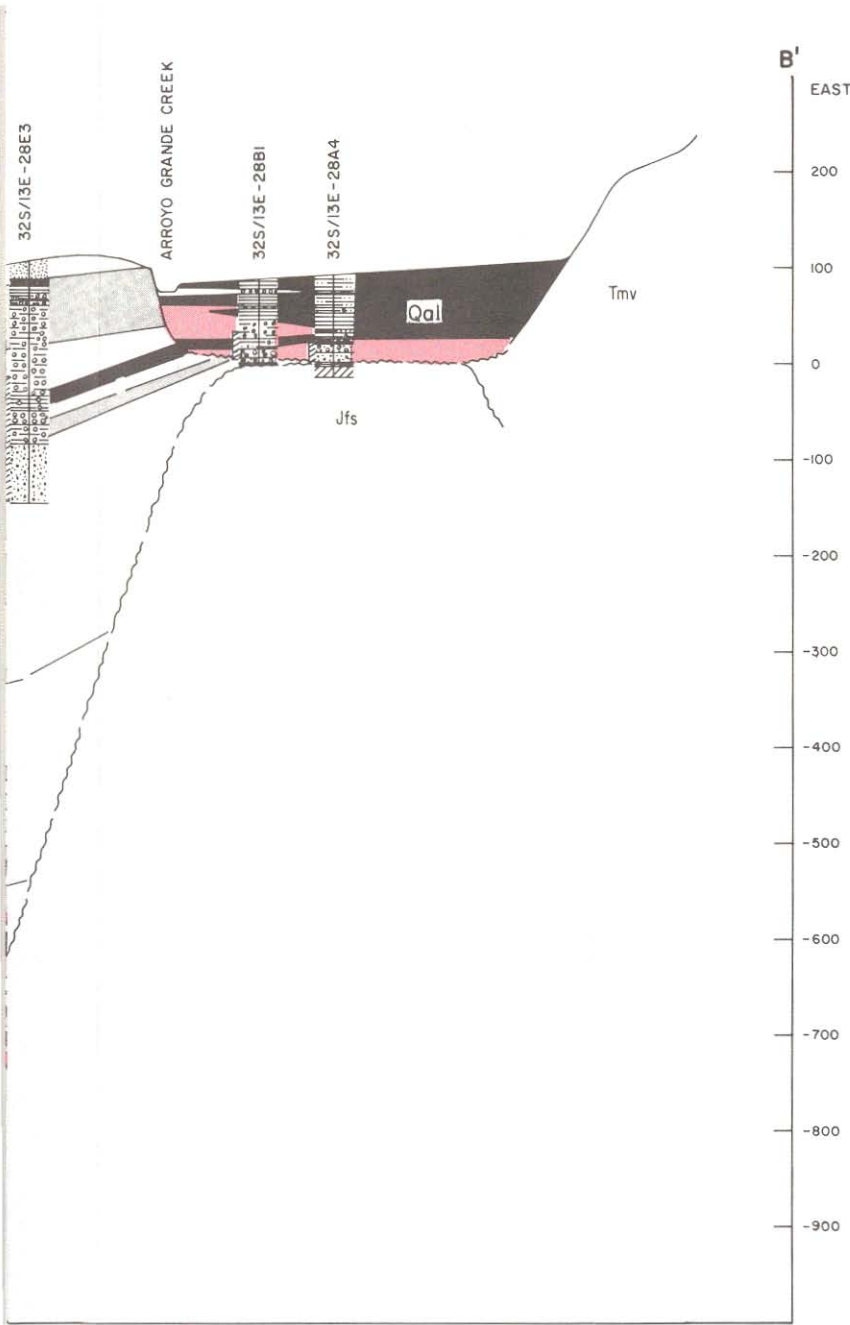


FINE TO MEDIUM SAND



SILT AND CLAY

FAULT - DASHED WHERE UNCERTAIN.
ARROWS INDICATE RELATIVE VERTICAL MOVEMENT



ARROWS INDICATE RELATIVE VERTICAL MOVEMENT

UNCONFORMITY

NOTE: FORMATION SYMBOLS AND LOCATION OF GEOLOGIC SECTIONS SHOWN ON PLATE 1.

VERTICAL SCALE 10 TIMES HORIZONTAL SCALE.

B'
EAST
200
100
0
-100
-200
-300
-400
-500
-600
-700
-800
-900

STATE OF CALIFORNIA
THE RESOURCES AGENCY
DEPARTMENT OF WATER RESOURCES
SOUTHERN DISTRICT

STATUS OF SEA - WATER INTRUSION :
PISMO - GUADALUPE AREA,
SAN LUIS OBISPO AND SANTA BARBARA COUNTIES



GEOLOGIC SECTIONS A - A' AND B - B'

HORIZONTAL SCALE OF FEET

