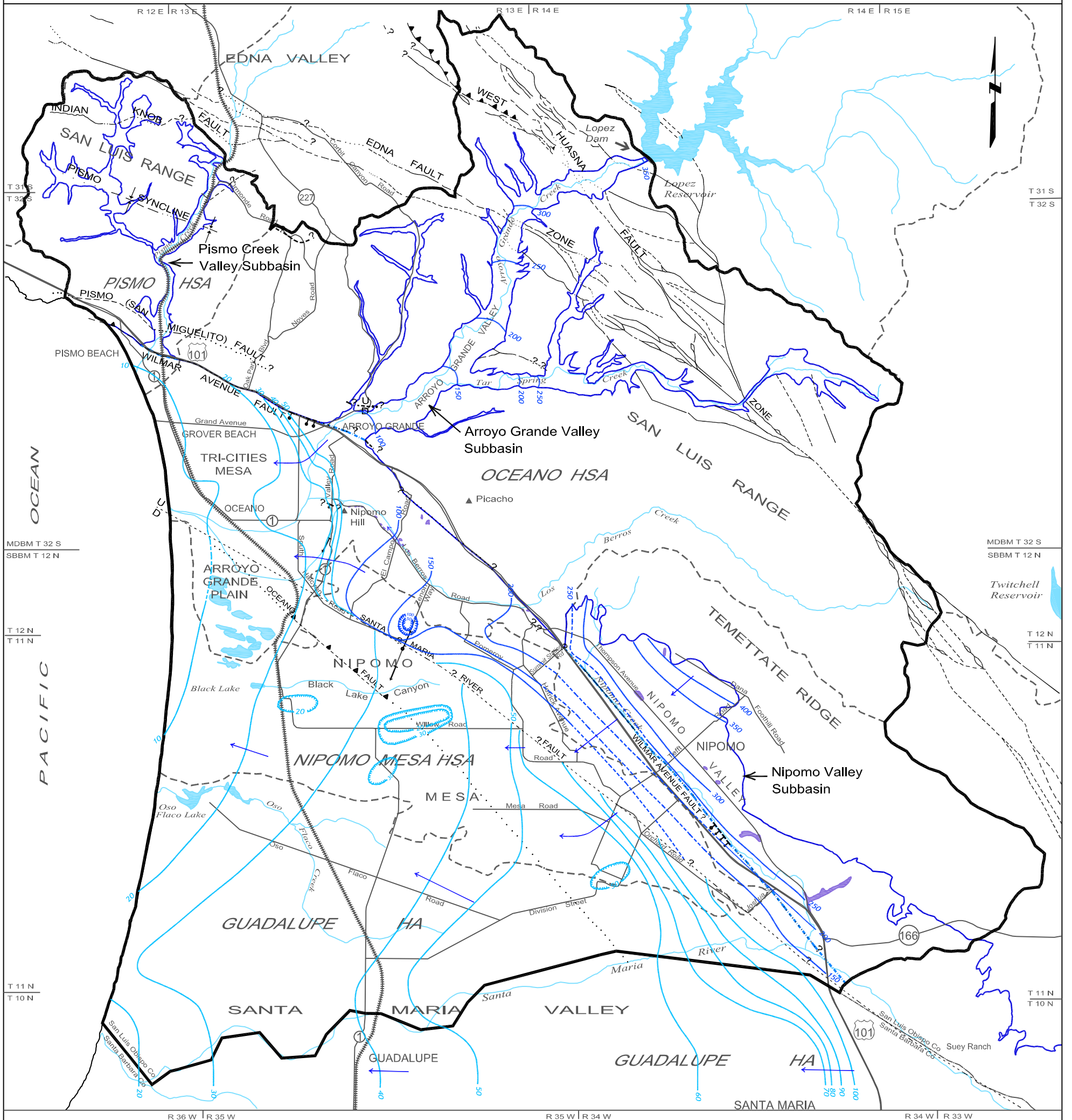


PLATE 12 - SPRING 1975 GROUNDWATER ELEVATION CONTOURS



LEGEND

- 10 Lines of equal elevation of groundwater in feet above mean sea level, contour interval 10 feet, dashed where inferred, hachures indicate depression
- 100 Lines of equal elevation of groundwater in feet above mean sea level, contour interval 50 feet, dashed where inferred, hachures indicate depression
- ← Direction of groundwater flow
- Study Area Boundary
- Groundwater Basin Boundary
- Groundwater Subbasin Boundary
- Hydrologic Area (HA) and Subarea (HSA) Boundaries
- Bedrock Outcrop Within Groundwater Basin
- Fault, dashed where approximately located, queried where inferred, dotted where concealed
- Thrust Fault, dashed where approximately located, saw-teeth on upper plate, dip of fault plane between 30 and 80 degrees
- Buried bedrock step of uncertain origin, ball on lower side
- Buried monocline, arrow showing direction and width of downwarp
- Syncline, showing trace of axial surface, dashed where approximately located, dotted where concealed



Copy of document found at [www.NoNewWipTax.com](http://www.NoNewWipTax.com)