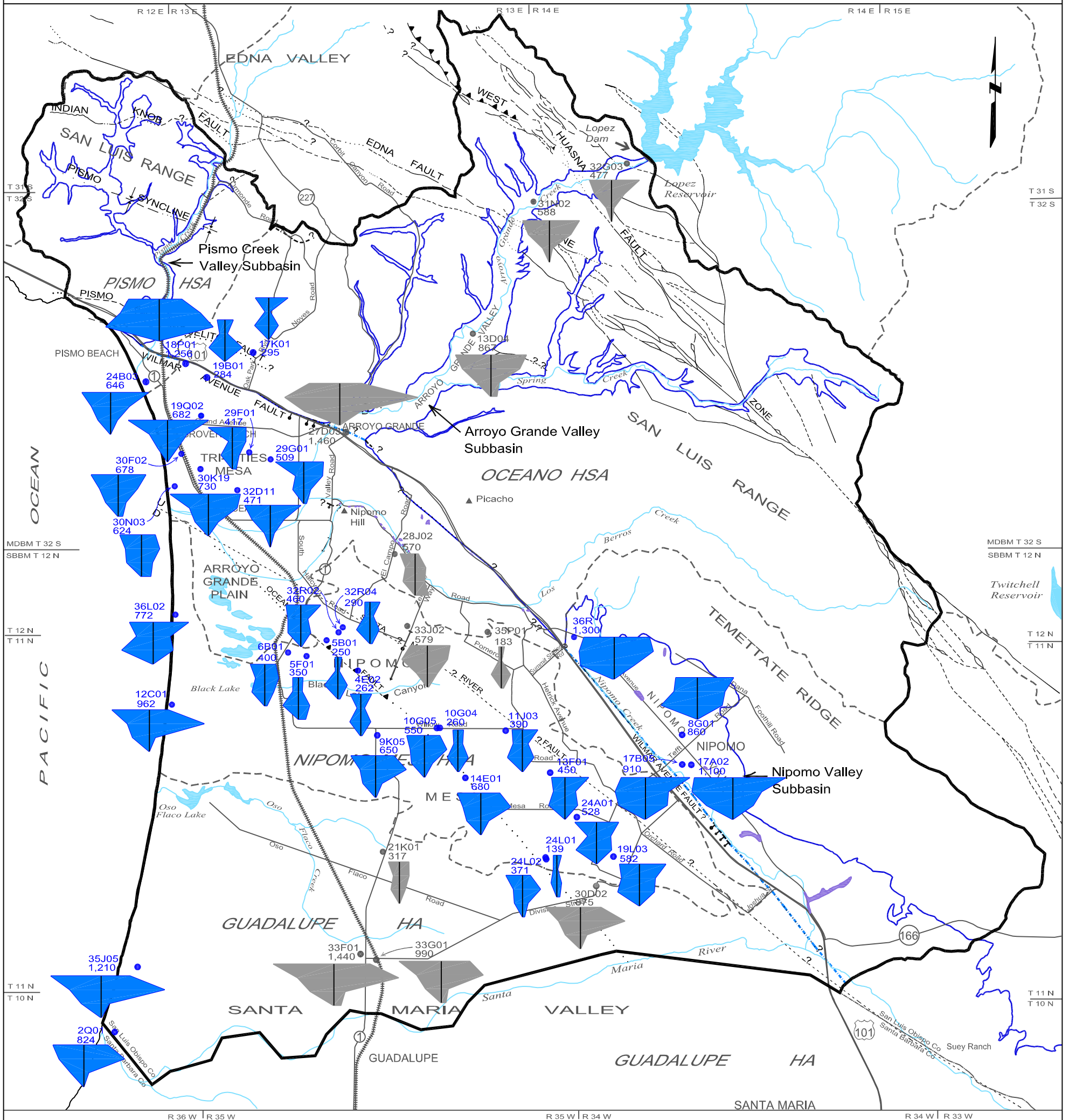
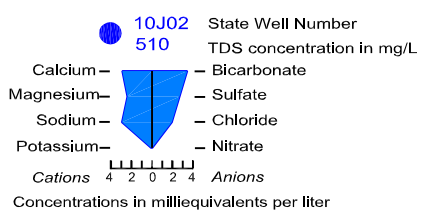


PLATE 15 - AREAL REPRESENTATION OF WATER QUALITY FROM WELLS



Key to Stiff Diagrams



Note: Diagrams in blue represent data from 1992 to 2000. Diagrams in gray represent data from the 1980s. The shape of the Stiff diagram indicates chemical composition. Differences in diagram configuration reflect differences in chemical composition. The size of the diagram is an indication of Total Dissolved Solids content.

LEGEND

- Study Area Boundary
- Groundwater Basin Boundary
- Groundwater Subbasin Boundary
- Hydrologic Area (HA) and Subarea (HSA) Boundaries
- Bedrock Outcrop Within Groundwater Basin
- Fault, dashed where approximately located, queried where inferred, dotted where concealed
- Thrust Fault, dashed where approximately located, saw-teeth on upper plate, dip of fault plane between 30 and 80 degrees
- Buried bedrock step of uncertain origin, ball on lower side
- Buried monocline, arrow showing direction and width of downwarp
- Syncline, showing trace of axial surface, dashed where approximately located, dotted where concealed

Scale in Miles

 Copy of document found at www.NoNewWipTax.com