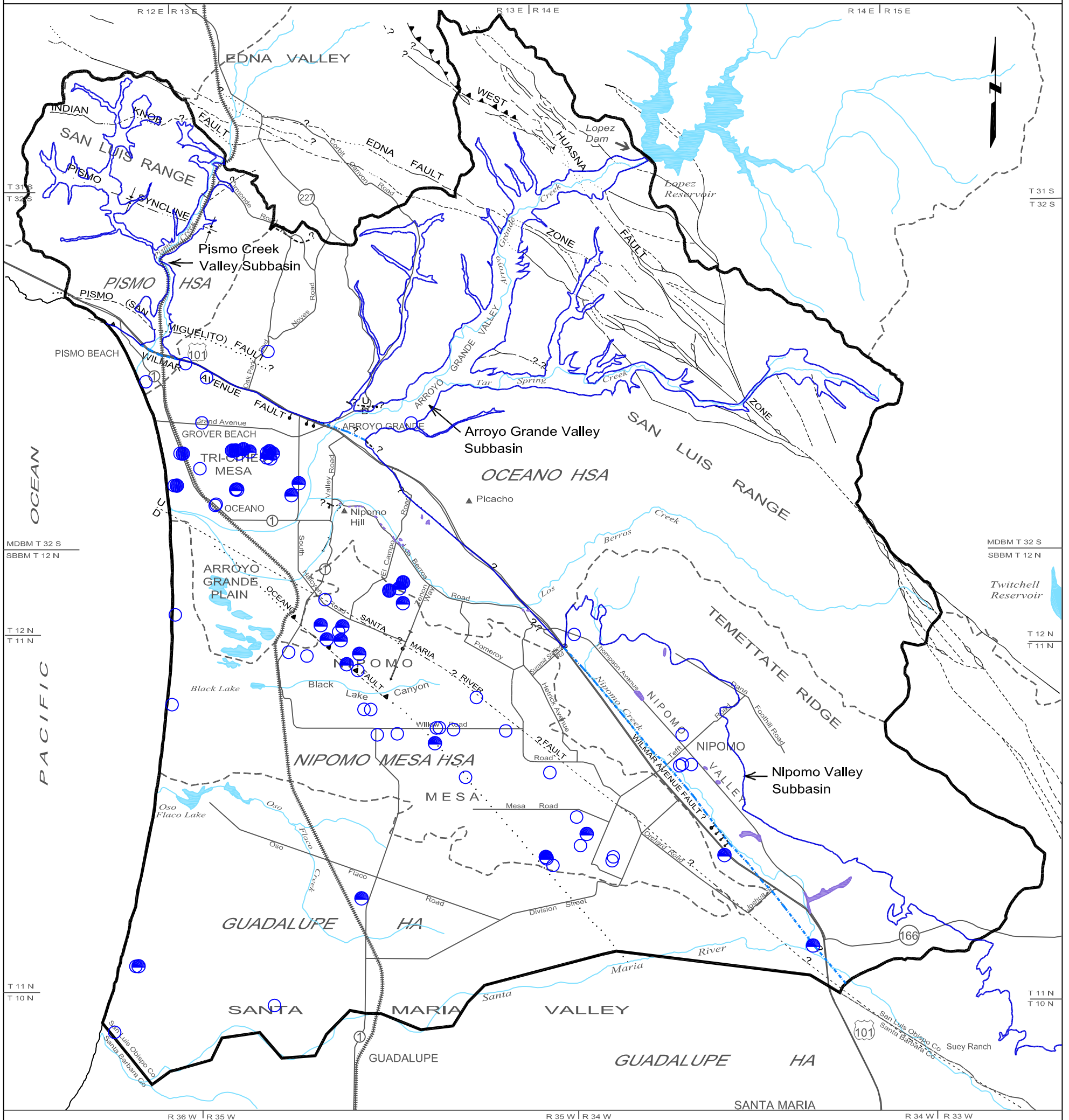


PLATE 17 - NITRATE CONCENTRATIONS IN GROUNDWATER

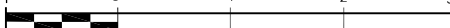


Nitrate Concentrations in Groundwater
1990 to 2000 Data

- <20 mg/L
- 20 to 44 mg/L
- ≥45 mg/L

LEGEND

- Study Area Boundary
- Groundwater Basin Boundary
- Groundwater Subbasin Boundary
- Hydrologic Area (HA) and Subarea (HSA) Boundaries
- Bedrock Outcrop Within Groundwater Basin
- Fault, dashed where approximately located, queried where inferred, dotted where concealed
- Thrust Fault, dashed where approximately located, saw-teeth on upper plate, dip of fault plane between 30 and 80 degrees
- Buried bedrock step of uncertain origin, ball on lower side
- Buried monocline, arrow showing direction and width of downwarp
- Syncline, showing trace of axial surface, dashed where approximately located, dotted where concealed



Scale in Miles
Copy of document found at www.NoNewWipTax.com