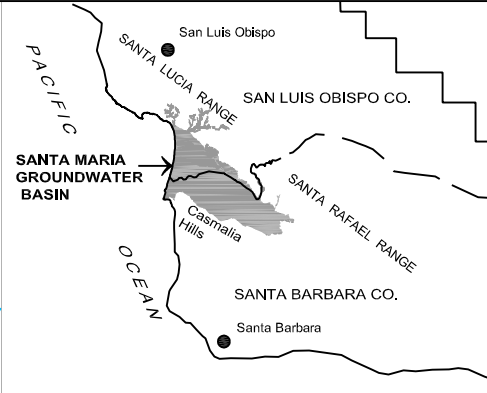
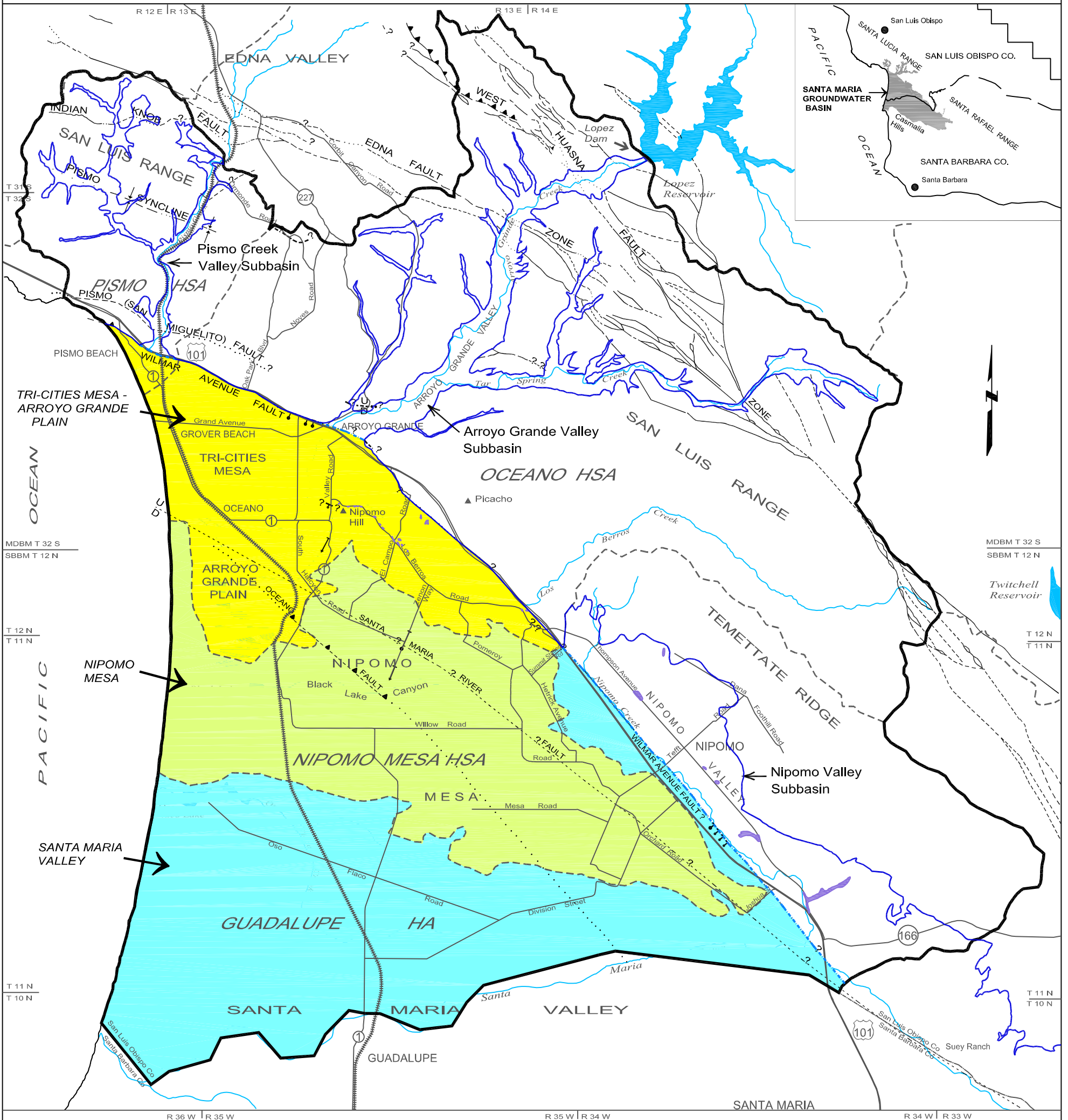


PLATE 19 - DIVISIONS WITHIN MAIN SANTA MARIA GROUNDWATER BASIN FOR WATER BUDGET



LEGEND

- | | | |
|--|---|---|
| <p>Divisions Within Main Groundwater Basin for Water Budget</p> <ul style="list-style-type: none"> Tri-Cities Mesa - Arroyo Grande Plain Nipomo Mesa Santa Maria Valley | <ul style="list-style-type: none"> Study Area Boundary Groundwater Basin Boundary Groundwater Subbasin Boundary Hydrologic Area (HA) and Subarea (HSA) Boundaries Bedrock Outcrop Within Groundwater Basin | <ul style="list-style-type: none"> Fault, dashed where approximately located, queried where inferred, dotted where concealed Thrust Fault, dashed where approximately located, saw-teeth on upper plate, dip of fault plane between 30 and 80 degrees Buried bedrock step of uncertain origin, ball on lower side Buried monocline, arrow showing direction and width of downwarp Syncline, showing trace of axial surface, dashed where approximately located, dotted where concealed |
|--|---|---|



Copy of document found at www.NoNewWipTax.com