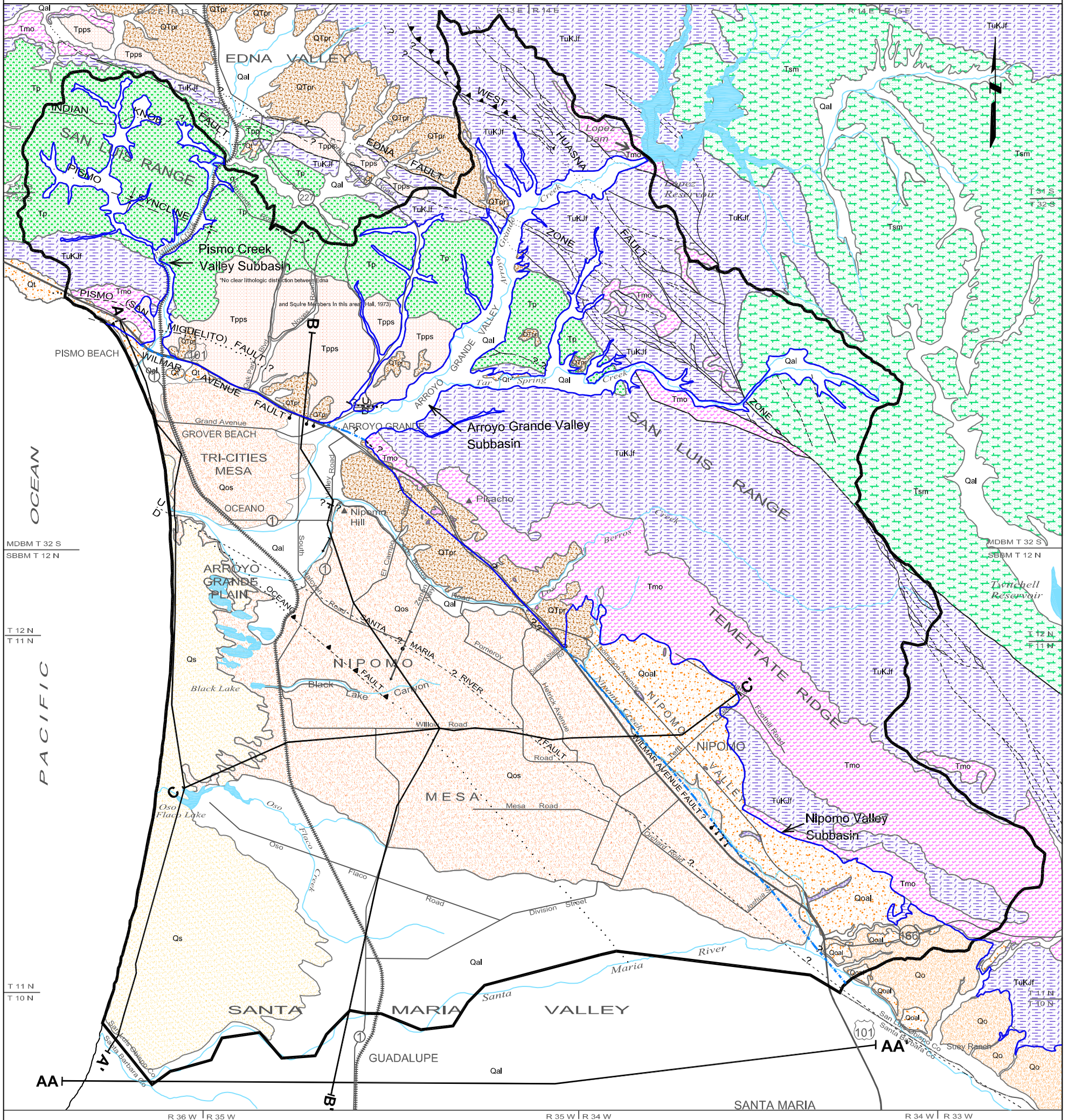
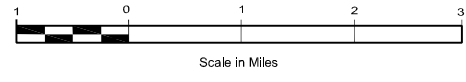


PLATE 2 - GENERALIZED GEOLOGY OF THE ARROYO GRANDE - NIPOMO MESA AREA



LEGEND

<p>Study Area Boundary</p> <p>Groundwater Basin Boundary</p> <p>Groundwater Subbasin Boundary</p> <p>Bedrock Outcrop</p>	<p>Qs Dune Sands</p> <p>Qal Alluvium</p> <p>Qos Older Dune Sands</p> <p>Qoal/Ql Older alluvium or Terrace Deposits</p> <p>Qo Orcutt Formation</p> <p>QTpr Paso Robles Formation</p>	<p>Tpps/Tpc Squire Member, Pismo Formation/ Careaga Formation</p> <p>Tp Pismo Formation</p> <p>Tem Santa Margarita Formation</p> <p>Tmo Obispo Formation</p> <p>TukJf Rocks Include Miocene Monterey Formation, Cretaceous Serpeninite and ultrabasic rocks, and Jurassic Franciscan Complex</p>	<p>---?..? Fault, dashed where approximately located, queried where inferred, dotted where concealed</p> <p>▲▲▲▲ Thrust Fault, dashed where approximately located, saw-teeth on upper plate, dip of fault plane between 30 and 80 degrees</p> <p> Buried bedrock step of uncertain origin. Ball on lower side</p> <p>↙ Buried monocline, arrow showing direction and width of downwarp</p> <p>⊥ Syncline, showing trace of axial surface, dashed where approximately located, dotted where concealed</p> <p>▲—▲ Line of Geologic Cross-Section</p> <p>AA—AA Line of Section showing Water Level Profiles</p>
--	---	---	--



Copy of document found at www.NoNewWipTax.com

Note: Modified from Hall & Corbato, 1967; Hall, 1973, 1978, 1981; Buchanan-Banks, et al., 1978; Dibblee, 1989, 1994; and Hanson, et al., 1994.