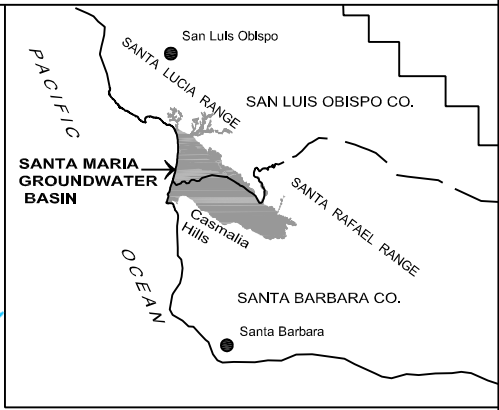
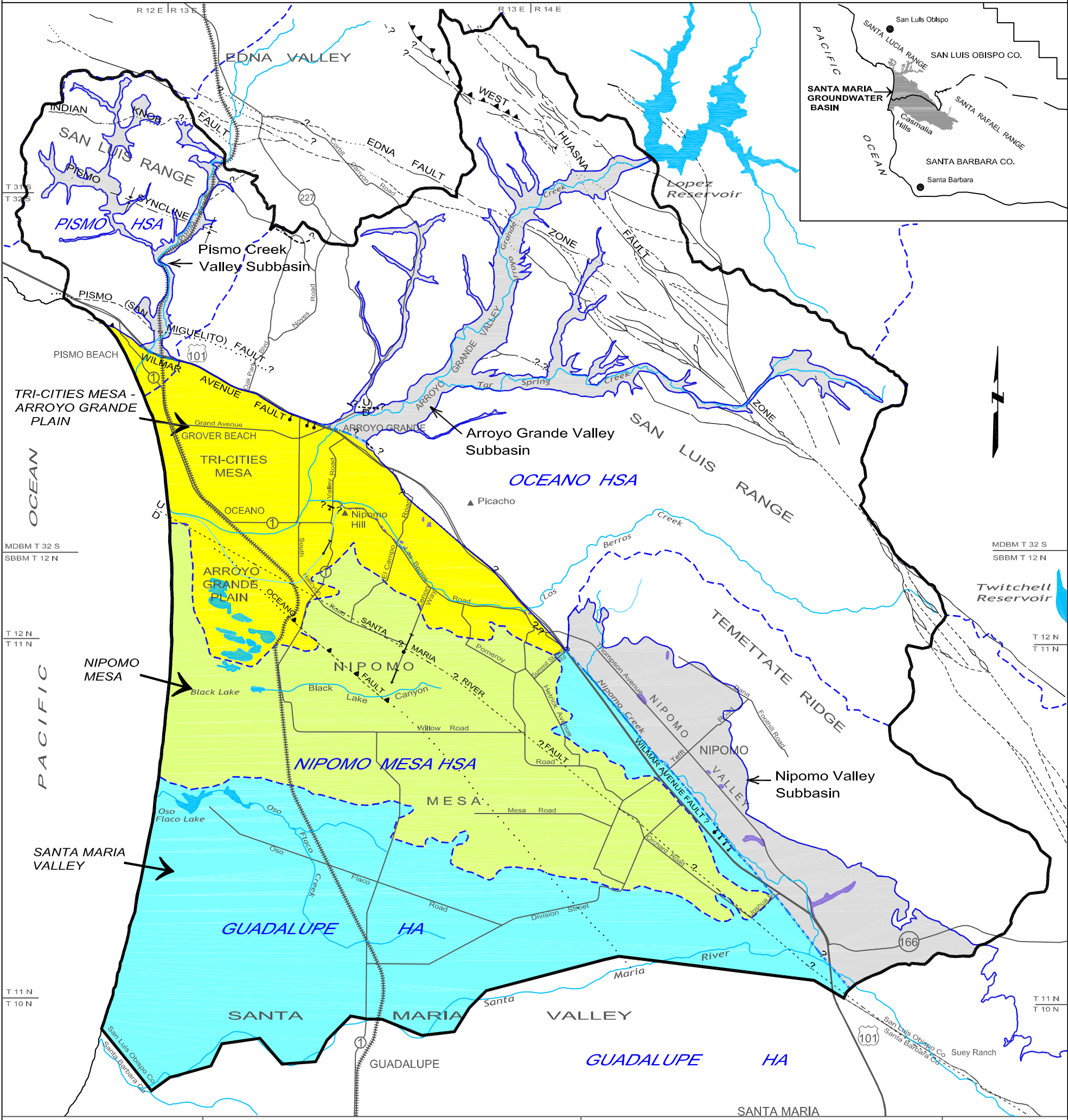


PLATE ES1 - ARROYO GRANDE - NIPOMO MESA STUDY AREA



LEGEND

- | | | | |
|--|----------------------|---|---|
| Divisions Within Santa Maria Groundwater Basin | | Study Area Boundary
Groundwater Basin Boundary
Groundwater Subbasin Boundary
Hydrologic Area (HA) and Subarea (HSA) Boundaries
Bedrock Outcrop Within Groundwater Basin | Fault, dashed where approximately located, queried where inferred, dotted where concealed
Thrust Fault, dashed where approximately located, saw-teeth on upper plate, dip of fault plane between 30 and 80 degrees
Buried bedrock step of uncertain origin, ball on lower side
Buried monocline, arrow showing direction and width of downwarp
Syncline, showing trace of axial surface, dashed where approximately located, dotted where concealed |
| Tri-Cities Mesa - Arroyo Grande Plain
Nipomo Mesa
Santa Maria Valley | Groundwater Subbasin | | |

