

TO: Bruce Buel, General Manager, Nipomo Community Services District

RE: Groundwater in storage underneath the NMMA as of Spring 2007

DATE: May 23, 2007

Page 2 of 3

1 Figure 6: NMMA Groundwater Levels in 2006 (with side-view)

2 Figure 7: NMMA Groundwater Levels in 2007 (with side-view)

3 Figure 8: Change in GW Level Surface from 2000 to 2006

4 Figure 9: Change in GW Level Surface from 2000 to 2007

5 Figure 10: Change in GW Level Surface from 2006 to 2007

6 RESULTS

7 **Table 1: Groundwater in Storage Underneath Nipomo Mesa Management Area**

Boundary	Volume of groundwater in storage above sea level (AF)			Volume of groundwater in storage below sea level (AF)
	April 2000	April 2006	April 2007	2000, 2006,2007
Nipomo Mesa Management Area (Phase III)	105,000	102,000	90,000	790,000

8 ➤ On average the groundwater elevations have dropped seven feet from April 2006 to
9 April 2007 when comparing water elevations taken at the same wells.

10 ➤ During Water Year 2007 rainfall was approximately 40 percent of normal in San Luis
11 Obispo and Santa Barbara Counties.

12 METHODOLOGY

13 *Well Measurements*

14 Groundwater level data originated from the San Luis Obispo County Department of
15 Public Works (SLO DPW), NCSO, and Woodlands. SLO DPW measures the groundwater
16 levels in monitoring wells in the spring and the fall of each year. SAIC staff accompanied the
17 SLO Department of Public Works (SLO DPW) in April 2007 water level monitoring and used
18 GPS measure the well locations and elevations for the SLO DPW monitoring wells. This data
19 was used to refine the water level information used for the 2000 and 2006 analysis.

20 NSCD and Woodlands measures the levels in its monitoring wells monthly. Woodlands
21 data for April 2007 was not released at the time of this analysis. The latest water level
22 measurements available were in January 2007. The January 2007 measurements were used to
23 estimate the water level elevations for April 2007. Table 2, 3, and 4 lists the data from April

TO: Bruce Buel, General Manager, Nipomo Community Services District

RE: Groundwater in storage underneath the NMMA as of Spring 2007

DATE: May 23, 2007

Page 3 of 3

1 2000, 2006, and 2007 respectively. Figure 2, 3, and 4 displays the well locations and the
2 measured groundwater elevations for April 2000, 2006, and 2007 respectively.

3 The groundwater level data were evaluated for accuracy. Well completion records and
4 historical hydrographic records were reviewed to flag data that appeared to be anomalous.
5 Data that did not follow the historical trend in well hydrographs were removed. Water level
6 measurements from shallow wells were also removed because of the concern that the
7 measurement represents a perched shallow aquifer and does not represent the water level of the
8 deep aquifer that is the subject of this analysis.

9 *Groundwater Surface Interpolation*

10 The well measurements were interpolated using an inverse distance weighting method
11 in ArcView 9.1 (Power=2, Number of points = 12). The interpolation was based on the data
12 points and was not interpreted based on assumptions related to structural geology. The
13 representations of the groundwater surface in April 2000, April 2006, and April 2007 are shown
14 in Figures 2 through 7.

15 *Groundwater Volume Estimate*

16 The groundwater volume above sea level as shown in Table 1 was estimated by
17 subtracting sea level surface (elevation equals zero) from the representation of the groundwater
18 surface and subtracting the volume of bedrock above sea level (The bedrock surface originated
19 from Figure 11: Base of Potential Water-Bearing Sediments (DWR 2002)). The groundwater
20 volume below sea level was estimated by subtracting the bed rock surface from the sea level
21 surface. The total volume of the groundwater was multiplied by the specific yield to estimate
22 the amount of groundwater in storage. The specific yield used was 11.7%, based on the average
23 weighted specific yield for the Nipomo Mesa Hydrologic Sub-area estimated by DWR (DWR
24 2002, pg. 86).

25 The amount of groundwater in storage under the Nipomo Mesa depends on the
26 boundary that is used to describe the Nipomo Mesa. For this analysis, the NMMA from Phase
27 III of the trial was used for continuity with previous analysis that SAIC had done in 2003.

28 *Change in Storage Comparison: 2007, 2006 and 2000*

29 The groundwater in storage in April 2007 was compared to storage levels in April 2006,
30 and April 2000 by subtracting the groundwater elevation surface in 2007 from 2006 and 2000
31 (See Figures 8, 9, 10). The groundwater pumping hole near NCSA Black Lake and Belington
32 wells was reduced from 2000 to 2007.

33

34

D
R
A
F
T

Table 2: Groundwater Measurements in April 2000

State Well Number	Common Name	Description	Reporting Agency	Ground Surface Elevation (ft MSL)	Depth to Water Surface (ft bgs)	Date	Water Surface Elevation (ft MSL)
11N34W05J01S			SLO DPW	380.0	11.0	4/21/2000	369.0
11N34W06L01S			SLO DPW	330.9	124.2	4/21/2000	206.7
11N34W09P01S			SLO DPW	369.7	64.2	4/21/2000	305.5
11N34W18P03S	NIPOMO REGIONAL PARK		SLO DPW	336.5	124.9	4/21/2000	211.6
11N34W19Q01S	BENNY - DIVISION		SLO DPW	284.9	230.0	4/21/2000	54.9
11N34W20J02S	EGG FARM		SLO DPW	301.1	224.4	4/21/2000	76.7
11N34W27D01S	P G & E	Sounded 135'11/74	SLO DPW	278.5	97.6	4/21/2000	180.9
11N34W27E01S	LAMPHIER - MESA	285' deep	SLO DPW	278.5	171.9	4/21/2000	106.6
11N34W5K01S			SLO DPW	363.1	23.4	4/21/2000	339.7
11N34W5K02S			SLO DPW	364.4	60.2	4/21/2000	304.2
11N35W02F01S	WILLIAMS - POMEROY	370-390'	SLO DPW	368.1	330.3	4/20/2000	37.8
11N35W03B01S	FIIZPATRICK - FRANKIE		SLO DPW	269.5	229.8	4/20/2000	39.7
11N35W05G01S	ANDREWS - FOWLER LANE		SLO DPW	122.1	109.6	4/19/2000	12.5
11N35W05G02S	WHITE - FOWLER LANE	140'+ pump	SLO DPW	120.4	108.9	4/19/2000	11.5
11N35W05L01S	SACKMAN - HWY #1	200' deep,then clay	SLO DPW	107.8	101.9	4/19/2000	5.9
11N35W05L03S	SACKMAN		SLO DPW	120.1	100.8	4/19/2000	19.3
11N35W05R01S	GATES - CALLENDER		SLO DPW	132.3	116.2	4/19/2000	16.1
11N35W06J01S	RUDD - HWY #1		SLO DPW	86.6	69.8	4/19/2000	16.8
11N35W09K04S	CASANO - HWY#1/WILLOW	274' deep, mixed aquifer	SLO DPW	145.3	140.7	4/19/2000	4.6
11N35W09K05S	Eureka		NCSD	173.6	147.0	4/26/2000	26.6
11N35W10G01S	BLACK LAKE GOLF - EAST	460' deep	SLO DPW	313.3	317.3	4/19/2000	-4.0
11N35W10G04S	Black Lake 3		NCSD	319.1	286.0	4/26/2000	33.1
11N35W10G05S	Black Lake 4		NCSD	301.4	337.0	4/26/2000	-35.6
11N35W10J02S	Bevington		NCSD	317.1	376.0	4/26/2000	-58.9
11N35W10L01S	Via Concha		NCSD	263.9	298.0	4/26/2000	-34.1
11N35W11B01S	NASHOLM - MESA	315-320/366-372	SLO DPW	367.2	336.8	4/21/2000	30.4
11N35W11C01S	NASHOLM - MESA		SLO DPW	238.8	258.5	4/21/2000	-19.7
11N35W11C02S	STRUBLE - MESA		SLO DPW	237.2	257.3	4/21/2000	-20.1
11N35W11J01S	CAMACHO - MESA		SLO DPW	338.5	257.6	4/20/2000	80.9
11N35W11J02S	Omiya		NCSD	389.6	298.0	4/26/2000	91.6
11N35W12E04S	NOLLER		SLO DPW	367.1	320.9	4/20/2000	46.2
11N35W13C01S	ARLT - POMEROY		SLO DPW	337.8	282.7	4/20/2000	55.1
11N35W13D01S	KAMINAKA		SLO DPW	302.3	263.7	4/20/2000	38.6
11N35W13E02S	KAMINAKA - SOUTH		SLO DPW	290.1	232.1	4/20/2000	58.0
11N35W13E03S	KAMINAKA - NORTH		SLO DPW	286.0	233.6	4/20/2000	52.4
11N35W13G01S	Olympic		NCSD	346.0	312.0	5/5/2000	34.4
11N35W13M02S	Dana 1 (Cheyenne)		NCSD	307.7	272.0	4/26/2000	35.7
11N35W14J01S	Dana 2 (Mandi)		NCSD	320.9	236.0	4/26/2000	84.9
11N35W15H01S	Sundale -South		NCSD	251.0	214.0	4/26/2000	37.0
12N34W31F01S		390 - 690	SLO DPW	396.1	73.5	4/21/2000	322.6
12N35W28J02S	BARNETT - HALCYON	360 - 520	SLO DPW	180.0	38.6	4/13/2000	141.4
12N35W30P02S	IKEDA BROS-CIENGA VALLEY	330 - 570	SLO DPW	26.0	3.1	4/19/2000	22.9
12N35W32G01S	COLE - HALCYON		SLO DPW	184.0	174.5	4/20/2000	9.5
12N35W33D01S	PHIL BEN		SLO DPW	240.0	131.1	4/13/2000	108.9
12N35W33J02S	DICK - FERNDALE	alluvium/Paso Robles	SLO DPW	250.4	257.6	4/20/2000	-7.2
12N35W33J03S	FAGUNDES - FERNDALE	390 - 465	SLO DPW	257.0	251.5	4/20/2000	5.5
12N35W33L01S	JOHNSON - HALCYON		SLO DPW	293.3	285.6	4/20/2000	7.7
12N35W34G08S	OLIVER - LOS BERROS		SLO DPW	189.0	24.5	4/17/2000	164.5
12N35W35P01S	JOHNSON - APPLGATE RANCH		SLO DPW	376.7	197.7	4/20/2000	179.0
12N35W35P03S	SEVERENCE - DOMESTIC		SLO DPW	388.8	228.8	4/20/2000	160.0
12N36W36L02S	PISMO BEACH - WEST		SLO DPW	9.1	3.4	4/28/2000	5.7
32E13E33A05M			SLO DPW	80.0	5.3	4/13/2000	74.7
32S13E33A06M	GARING NEW DOM		SLO DPW	80.0	20.5	4/13/2000	59.5
32S13E33K03M	WALLER SEED COMPANY		SLO DPW	51.5	28.5	4/14/2000	23.0
	Savage		NCSD	310.0	19.0	4/26/2000	291.0

Table 2: Groundwater Measurements in April 2000

State Well Number	Common Name	Description	Reporting Agency	Ground Surface Elevation (ft MSL)	Depth to Water Surface (ft bgs)	Date	Water Surface Elevation (ft MSL)
11N34W05J01S			SLO DPW	380.0	11.0	4/21/2000	369.0
	Church		NCSO	300.0	85.0	4/26/2000	215.0
	Hermreck		NCSO	340.0	22.0	4/26/2000	318.0
	DAWN		Woodlands	248.1	218.0	4/18/2000	30.3
	HWY 1 PRODUCTION		Woodlands	245.3	212.0	4/18/2000	33.0
	HWY 1 MONITORING		Woodlands	244.3	198.0	4/18/2000	46.0
	MESA		Woodlands	246.7	201.0	4/18/2000	42.3
	HOMESTEAD		Woodlands	184.9	143.0	4/18/2000	42.0
	FLINTCOTE		Woodlands	241.6	204.0	4/18/2000	38.0

Table 3: Measurements in April 2006

State Well Number	Common Name	Description	Reporting Agency	Ground Surface Elevation (ft MSL)	Depth to Water Surface (ft bgs)	Date	Water Surface Elevation (ft MSL)
11N34W05J01S			SLO DPW	380.0	7.2	4/11/2006	372.8
11N34W06L01S			SLO DPW	330.9	117.8	4/11/2006	213.1
11N34W09P01S			SLO DPW	369.7	81.5	4/11/2006	288.2
11N34W17B04S			SLO DPW	298.7	35.2	4/6/2006	263.6
11N34W18P03S	NIPOMO REGIONAL PARK	230/245,-,280/300	SLO DPW	336.5	119.7	4/6/2006	216.8
11N34W19Q01S	BENNY - DIVISION	315' depth	SLO DPW	284.9	238.8	4/11/2006	46.1
11N34W20J02S	EGG FARM		SLO DPW	301.1	228.1	4/11/2006	73.0
11N34W27D01S	P G & E	Sounded 135'11/74	SLO DPW	278.5	72.2	4/6/2006	206.3
11N34W27E01S	LAMPHIER - MESA	285' deep	SLO DPW	278.5	196.5	4/6/2006	82.1
11N34W5K01S			SLO DPW	363.1	24.5	4/11/2006	338.6
11N34W5K02S			SLO DPW	364.4	71.6	4/11/2006	292.8
11N35W02G02S	SMITH DOMESTIC	258' depth per owner	SLO DPW	381.3	219.1	4/18/2006	162.3
11N35W03B01S	FITZPATRICK - FRANKIE	290-310'	SLO DPW	269.5	231.1	4/18/2006	38.4
11N35W05G01S	ANDREWS - FOWLER LANE	250-265',165'depth	SLO DPW	122.1	106.4	4/10/2006	15.7
11N35W05G02S	WHITE - FOWLER LANE	140'+ pump	SLO DPW	120.4	111.1	4/10/2006	9.3
11N35W05L01S	SACKMAN - HWY #1	200' deep,then clay	SLO DPW	107.8	99.1	4/10/2006	8.7
11N35W05L03S	SACKMAN		SLO DPW	120.1	98.1	4/10/2006	22.0
11N35W05R01S	GATES - CALLENDER	240' deep	SLO DPW	132.3	113.7	4/13/2006	18.6
11N35W08L01S			SLO DPW	109.0	90.0	4/30/2006	19.0
11N35W09K04S	CASANO - HWY#1/WILLOW	274' deep, mixed aquifer	SLO DPW	145.3	133.5	4/10/2006	11.8
11N35W09K05S	Eureka	220-575	NCSD	173.6	144.0	4/3/2006	29.6
11N35W10F--S			Woodlands	277.9	253.0	4/17/2006	24.9
11N35W10G01S	BLACK LAKE GOLF - EAST	460' deep	SLO DPW	313.3	316.6	4/10/2006	-3.3
11N35W10G04S	Black Lake 3	330 - 560	NCSD	319.1	295.0	4/3/2006	24.1
11N35W10G05S	Black Lake 4	360 - 520	NCSD	301.4	349.0	4/3/2006	-47.6
11N35W10J02S	Bevington	330 - 570	NCSD	317.1	299.0	4/3/2006	18.1
11N35W10L01S	Via Concha	390 - 690	NCSD	263.9	312.0	4/3/2006	-48.1
11N35W10N--S			Woodlands	246.0	216.8	5/16/2006	29.2
11N35W11B01S	NASHOLM - MESA	315-320/366-372	SLO DPW	367.2	335.6	4/11/2006	31.6
11N35W11C01S	NASHOLM - MESA	210-233/320-324	SLO DPW	238.8	238.6	4/11/2006	0.2
11N35W11C02S	STRUBLE - MESA	312' deep	SLO DPW	237.2	243.2	4/11/2006	-6.0
11N35W11J01S	CAMACHO - MESA	257-267/287-297/-313	SLO DPW	338.5	250.3	4/11/2006	88.2
11N35W11J02S	Omiya	390 - 465	NCSD	389.6	308.0	4/3/2006	81.6
11N35W13C01S	ARLT - POMEROY	500'	SLO DPW	337.8	285.6	4/11/2006	52.2
11N35W13D01S	KAMINAKA		SLO DPW	302.3	269.4	4/6/2006	33.0
11N35W13E02S	KAMINAKA - SOUTH	PR form. 430' deep	SLO DPW	290.1	243.4	4/6/2006	46.8
11N35W13M02S	Dana 1 (Cheyenne)		NCSD	307.7	307.0	4/3/2006	0.7
11N35W14J01S	Dana 2 (Mandi)		NCSD	320.9	305.0	4/3/2006	15.9
11N35W15B03S			Woodlands	239.4	194.1	4/17/2006	45.3
11N35W15B04S			Woodlands	246.6	209.8	4/17/2006	36.8
11N35W15G01S			Woodlands	234.8	191.2	4/17/2006	43.6
11N35W15H01S	Sundale -South	380 - 580, 630 - 670	NCSD	251.0	209.0	4/3/2006	42.0
12N34W31F01S			SLO DPW	396.1	76.0	4/11/2006	320.1
12N35W27N03S	PHALEN CATTLE COMPAN	40-82 3/8"SLO DPWts	SLO DPW	161.8	2.7	4/13/2006	-2.7
12N35W28J02S	BARNETT - HALCYON		SLO DPW	180.0	48.1	4/13/2006	131.9
12N35W29R03S	CURRIER - OLD SPILLMAN	300'+ depth	SLO DPW	211.7	200.5	4/21/2006	11.2
12N35W30P02S	IKEDA BROS-CIENGA VALLEY		SLO DPW	26.0	2.4	4/13/2006	23.6
12N35W32G01S	COLE - HALCYON	320' depth	SLO DPW	184.0	172.2	4/19/2006	11.8
12N35W33D01S	PHIL BEN		SLO DPW	240.0	150.9	4/13/2006	89.1
12N35W33J02S	DICK - FERNDAL	443'dp/pump @ 320'	SLO DPW	250.4	251.8	4/18/2006	-1.4
12N35W33J03S	FAGUNDES - FERNDAL	407' deep	SLO DPW	257.0	241.2	4/18/2006	15.9
12N35W33L01S	JOHNSON - HALCYON		SLO DPW	293.3	288.5	4/19/2006	4.8
12N35W34G08S	OLIVER - LOS BERROS		SLO DPW	189.0	25.7	4/13/2006	163.4
12N35W35P01S	JOHNSON - APPLGATE RA	220'	SLO DPW	376.7	195.7	4/18/2006	181.1
12N35W35P03S	SEVERENCE - DOMESTIC		SLO DPW	388.8	221.1	4/18/2006	167.7

Table 3: Measurements in April 2006

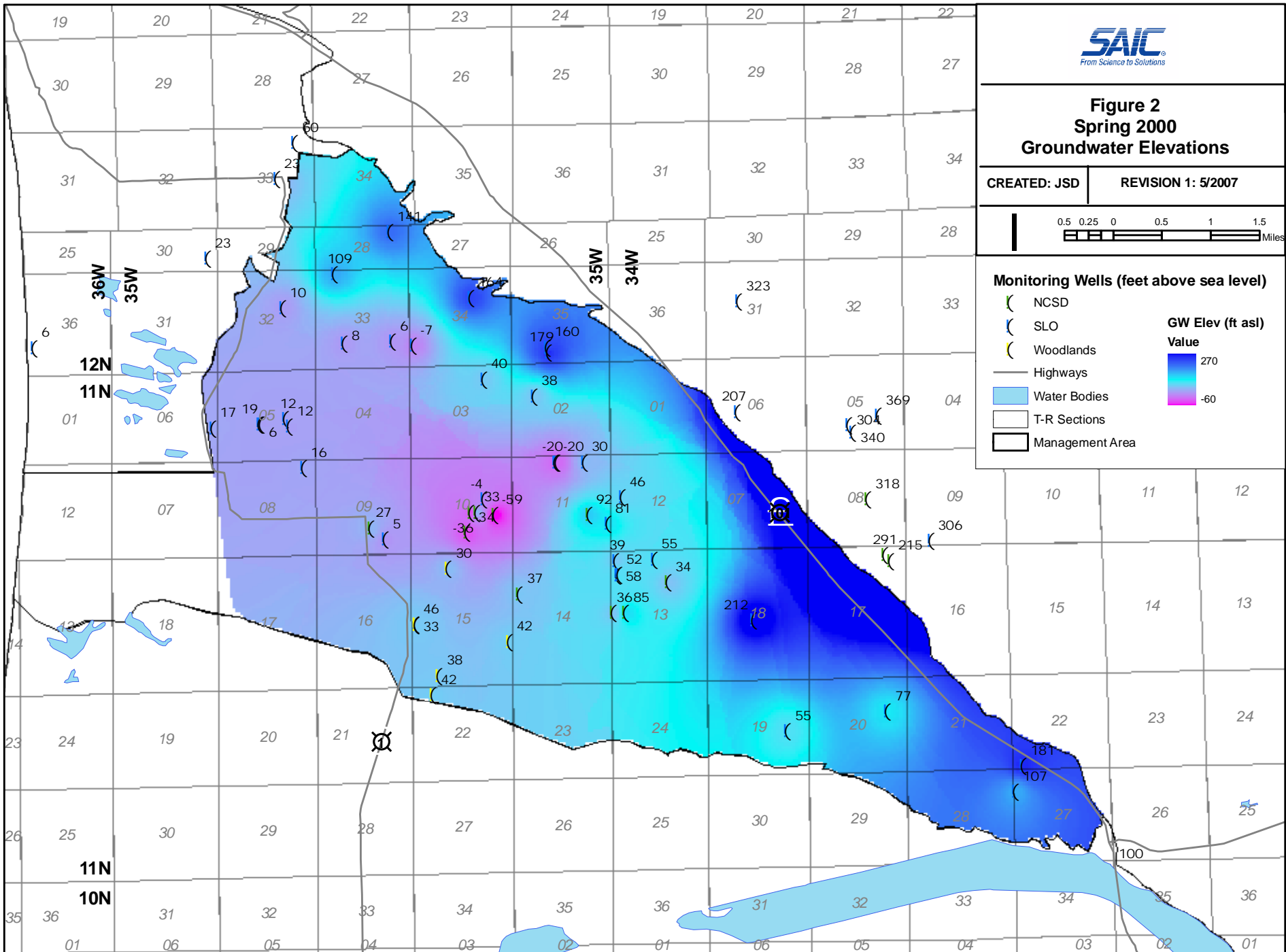
State Well Number	Common Name	Description	Reporting Agency	Ground Surface Elevation (ft MSL)	Depth to Water Surface (ft bgs)	Date	Water Surface Elevation (ft MSL)
12N36W36L02S	PISMO BEACH - WEST	535-545'	SLO DPW	9.1	3.4	4/20/2006	5.7
32S13E33A06M	GARING NEW DOM		SLO DPW	80.0	29.9	4/13/2006	50.1
32S13E33K03M	WALLER SEED COMPANY	64-82' 96'deep	SLO DPW	51.5	27.3	4/13/2006	24.2
	Sundale - North (Knollwood)		NCSD	279.0	274.0	4/3/2006	5.0
	Savage		NCSD	310.0	39.0	4/3/2006	271.0
	Church	140-240	NCSD	300.0	55.0	4/3/2006	245.0
	DAWN		Woodlands	233.8	202.0	4/17/2006	31.6
	HWY 1 PRODUCTION		Woodlands	245.3	211.0	4/17/2006	34.0
	HWY 1 MONITORING		Woodlands	244.3	200.0	4/17/2006	45.0
	MESA		Woodlands	246.7	205.0	4/17/2006	41.4
	HOMESTEAD		Woodlands	184.9	144.0	4/17/2006	41.0
	FLINTCOTE		Woodlands	241.6	201.0	4/17/2006	40.0
	OLYMPIC		NCSD	346.0	344.0	4/17/2006	2.0

Table 4: Measurements in April 2007

State Well Number	Common Name	Description	Reporting Agency	Ground Surface Elevation (ft MSL)	Depth to Water Surface (ft bgs)	Date	Water Surface Elevation (ft MSL)
11N34W05J01S			SLO DPW	380.0	20.9	4/19/2007	359.2
11N34W06L01S			SLO DPW	330.9	129.4	4/19/2007	201.6
11N34W09P01S			SLO DPW	369.7	84.7	4/19/2007	285.0
11N34W17B04S			SLO DPW	298.7	45.5	4/19/2007	253.2
11N34W18P03S	NIPOMO REGIONAL PARK	230/245,-,280/300	SLO DPW	336.5	117.6	4/19/2007	218.9
11N34W19Q01S	BENNY - DIVISION	315' depth	SLO DPW	284.9	255.5	4/23/2007	29.5
11N34W20J02S	EGG FARM		SLO DPW	301.1	231.0	4/23/2007	70.2
11N34W27D01S	P G & E	Sounded 135'11/74	SLO DPW	278.5	70.9	4/23/2007	207.6
11N34W27E01S	LAMPHIER - MESA	285' deep	SLO DPW	278.5	177.1	4/23/2007	101.4
11N34W27P01S			SLO DPW	274.3	95.2	4/23/2007	179.1
11N34W29Q02S			SLO DPW	171.7	100.6	4/24/2007	71.2
11N34W29R01S			SLO DPW	167.9	84.3	4/24/2007	83.6
11N34W5K01S			SLO DPW	363.1	28.3	4/24/2007	334.8
11N34W5K02S			SLO DPW	364.4	111.7	4/24/2007	252.7
11N35W02F01S	WILLIAMS - POMEROY	370-390'	SLO DPW	368.1	359.8	4/19/2007	8.3
11N35W02G02S	SMITH DOMESTIC	258' depth per owner	SLO DPW	381.3	216.6	4/19/2007	164.7
11N35W03B01S	FITZPATRICK - FRANKIE	290-310'	SLO DPW	269.5	232.8	4/23/2007	36.8
11N35W05G01S	ANDREWS - FOWLER LANE	250-265',165'depth	SLO DPW	122.1	113.9	4/24/2007	8.2
11N35W05G02S	WHITE - FOWLER LANE	140'+ pump	SLO DPW	120.4	124.5	4/24/2007	-4.1
11N35W05L01S	SACKMAN - HWY #1	200' deep,then clay	SLO DPW	107.8	111.0	4/24/2007	-3.2
11N35W05L03S	SACKMAN		SLO DPW	120.1	113.7	4/24/2007	6.4
11N35W05R01S	GATES - CALLENDER	240' deep	SLO DPW	132.3	126.2	4/24/2007	6.1
11N35W06J01S	RUDD - HWY #1		SLO DPW	86.6	77.2	4/24/2007	9.4
11N35W08L01S			SLO DPW	109.0	105.0	4/24/2007	4.1
11N35W09K02S	SCHAEFER HWY#1/WILLOW	356' deep	SLO DPW	144.3	123.2	4/24/2007	21.1
11N35W09K04S	CASANO - HWY#1/WILLOW	274' deep, mixed aquifer	SLO DPW	145.3	151.8	4/24/2007	-6.4
11N35W09K05S	Eureka	220-575	NCSD	173.6	190.0	4/9/2007	-16.4
11N35W10F--S			Woodlands	277.9	263.9	1/11/2007	14.0
11N35W10G01S	BLACK LAKE GOLF - EAST	460' deep	SLO DPW	313.3	279.1	4/24/2007	34.3
11N35W10G04S	Black Lake 3	330 - 560	NCSD	319.1	255.0	4/9/2007	64.1
11N35W10G05S	Black Lake 4	360 - 520	NCSD	301.4	292.0	4/9/2007	9.4
11N35W10J02S	Bevington	330 - 570	NCSD	317.1	311.0	1/9/2007	6.1
11N35W10L01S	Via Concha	390 - 690	NCSD	263.9	291.0	4/9/2007	-27.1
11N35W10N--S			Woodlands	246.0	217.6	1/11/2007	28.4
11N35W11B01S	NASHOLM - MESA	315-320/366-372	SLO DPW	367.2	339.5	4/24/2007	27.7
11N35W11C01S	NASHOLM - MESA	210-233/320-324	SLO DPW	238.8	242.9	4/24/2007	-4.1
11N35W11C02S	STRUBLE - MESA	312' deep	SLO DPW	237.2	259.4	4/24/2007	-22.2
11N35W11J01S	CAMACHO - MESA	257-267/287-297/-313	SLO DPW	338.5	249.9	4/23/2007	88.6
11N35W12E04S	NOLLER		SLO DPW	367.1	318.1	4/23/2007	49.1
11N35W13C01S	ARLT - POMEROY	500'	SLO DPW	337.8	286.3	4/19/2007	51.5
11N35W13D01S	KAMINAKA		SLO DPW	302.3	277.7	4/23/2007	24.6
11N35W13E02S	KAMINAKA - SOUTH	PR form. 430' deep	SLO DPW	290.1	235.1	4/19/2007	55.0
11N35W13E03S	KAMINAKA - NORTH	PR formations	SLO DPW	286.0	227.8	4/19/2007	58.2
11N35W13G01S	Olympic	365-455	NCSD	346.4	357.0	4/9/2007	-10.6
11N35W13M02S	Dana 1 (Cheyenne)		NCSD	307.7	286.0	4/9/2007	21.7
11N35W14J01S	Dana 2 (Mandi)		NCSD	320.9	266.0	4/9/2007	54.9
11N35W15B03S			Woodlands	239.4	204.0	1/11/2007	35.4
11N35W15B04S			Woodlands	246.6	218.2	1/11/2007	28.4
11N35W15G01S			Woodlands	234.8	200.2	1/11/2007	34.6
11N35W15H01S	Sundale -South	380 - 580, 630 - 670	NCSD	251.0	224.0	2/12/2007	27.0
11N35W28F02S			SLO DPW	74.1	39.7	4/24/2007	34.4
12N35W28J02S	BARNETT - HALCYON		SLO DPW	180.0	47.3	4/17/2007	132.7

Table 4: Measurements in April 2007

State Well Number	Common Name	Description	Reporting Agency	Ground Surface Elevation (ft MSL)	Depth to Water Surface (ft bgs)	Date	Water Surface Elevation (ft MSL)
12N35W32G01S	COLE - HALCYON	320' depth	SLO DPW	184.0	179.7	4/24/2007	4.3
12N35W33D01S	PHIL BEN		SLO DPW	240.0	152.2	4/17/2007	87.8
12N35W33J02S	DICK - FERNDALE	443' dp/pump @ 320'	SLO DPW	250.4	255.4	4/23/2007	-5.0
12N35W33J03S	FAGUNDES - FERNDALE	407' deep	SLO DPW	257.0	253.2	4/23/2007	3.8
12N35W33L01S	JOHNSON - HALCYON		SLO DPW	293.3	291.0	4/23/2007	2.3
12N35W34G08S	OLIVER - LOS BERROS		SLO DPW	189.0	36.1	4/17/2007	152.9
12N35W35P01S	JOHNSON - APPLGATE RA	220'	SLO DPW	376.7	194.0	4/19/2007	182.8
12N35W35P03S	SEVERENCE - DOMESTIC		SLO DPW	388.8	220.4	4/19/2007	168.5
12N36W36L02S	PISMO BEACH - WEST	535-545'	SLO DPW	9.1	11.0	4/18/2007	-1.9
32S13E33A06M	GARING NEW DOM		SLO DPW	80.0	39.2	4/17/2007	40.8
32S13E33K03M	WALLER SEED COMPANY	64-82' 96'deep	SLO DPW	51.5	33.4	4/17/2007	18.1
	OSO FLACO LAST WELL		SLO DPW	33.4	20.0	4/19/2007	13.4
	Sundale - North (Knollwood)		NCSD	279.0	265.0	1/9/2007	14.0
	Savage		NCSD	310.0	42.0	4/9/2007	268.0
	Church	140-240	NCSD	300.0	129.0	4/9/2007	171.0
	DAWN		Woodlands	233.8	212.0	1/11/2007	21.3
	HWY 1 PRODUCTION		Woodlands	245.3	221.0	1/11/2007	24.0
	MESA		Woodlands	246.7	215.0	1/11/2007	31.8
	HOMESTEAD		Woodlands	184.9	164.0	1/11/2007	21.0
	FLINTCOTE		Woodlands	241.6	210.0	1/11/2007	32.0



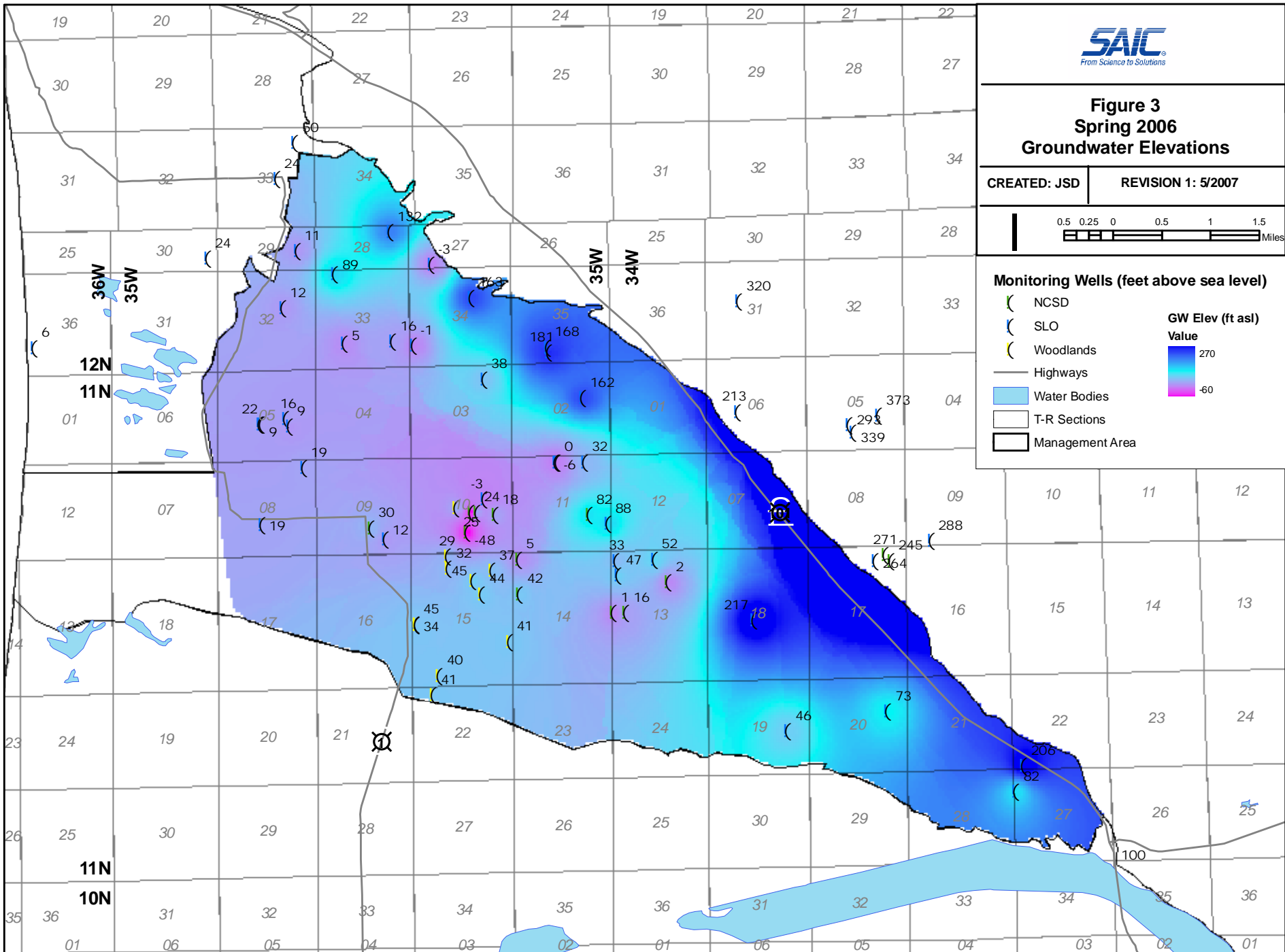
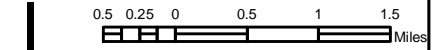




Figure 4
Spring 2007
Groundwater Elevations

CREATED: JSD

REVISION 1: 5/2007



Monitoring Wells (feet above sea level)

- () NCSD
 - () SLO
 - () Woodlands
 - Highways
 - Water Bodies
 - T-R Sections
 - Management Area
- GW Elev (ft asl)**
Value
-
- 270
-60

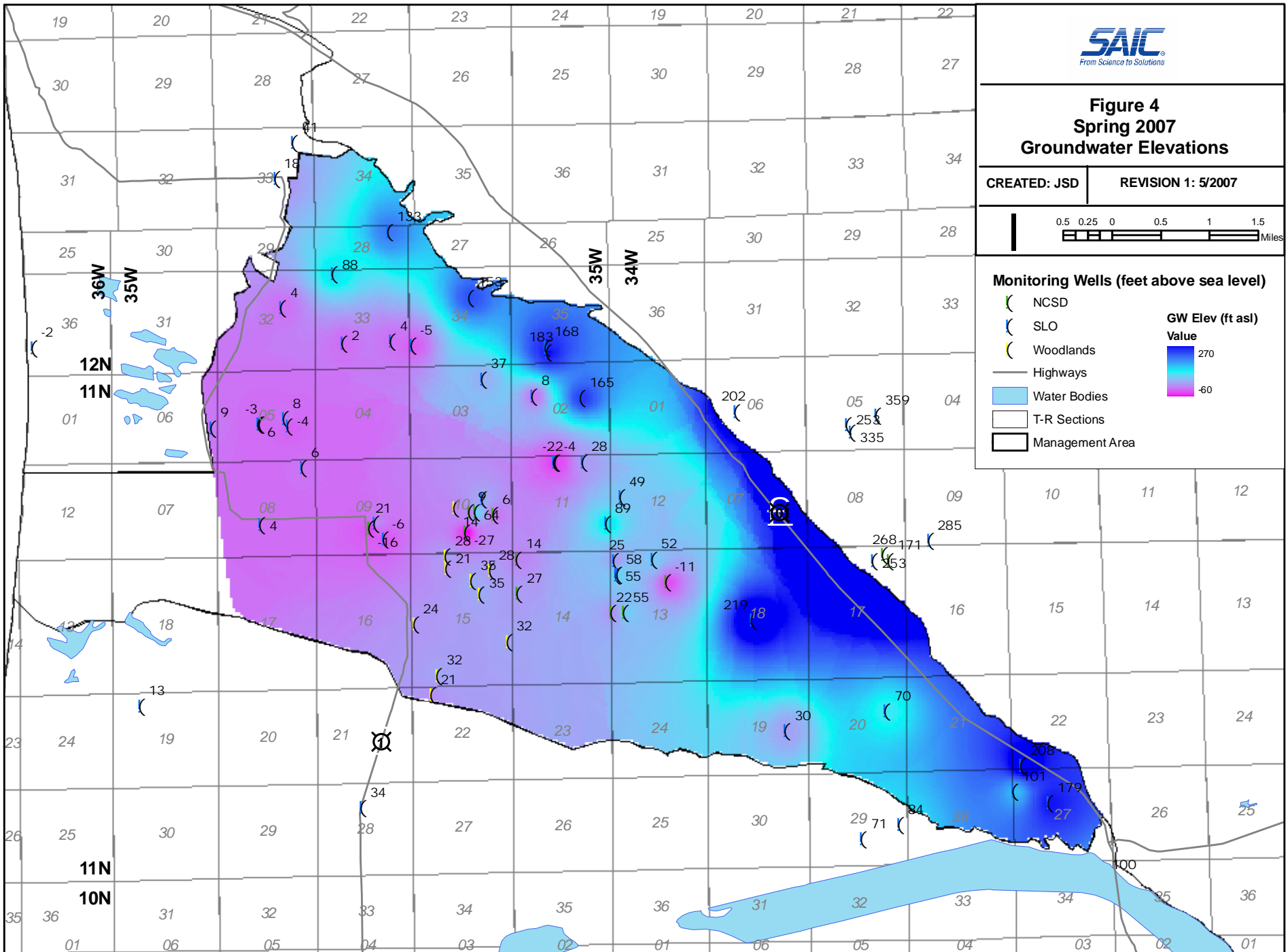
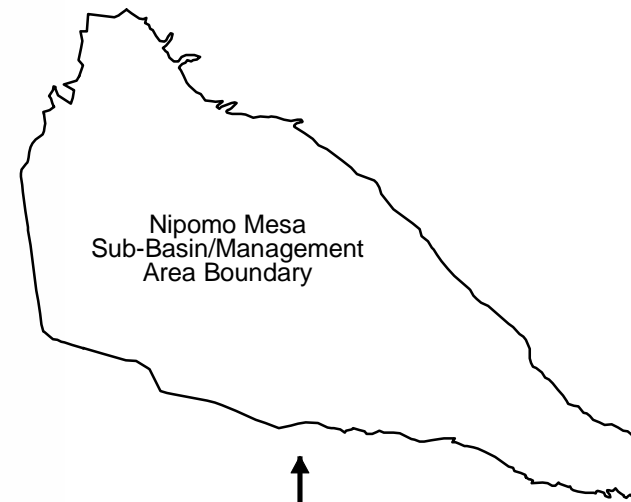
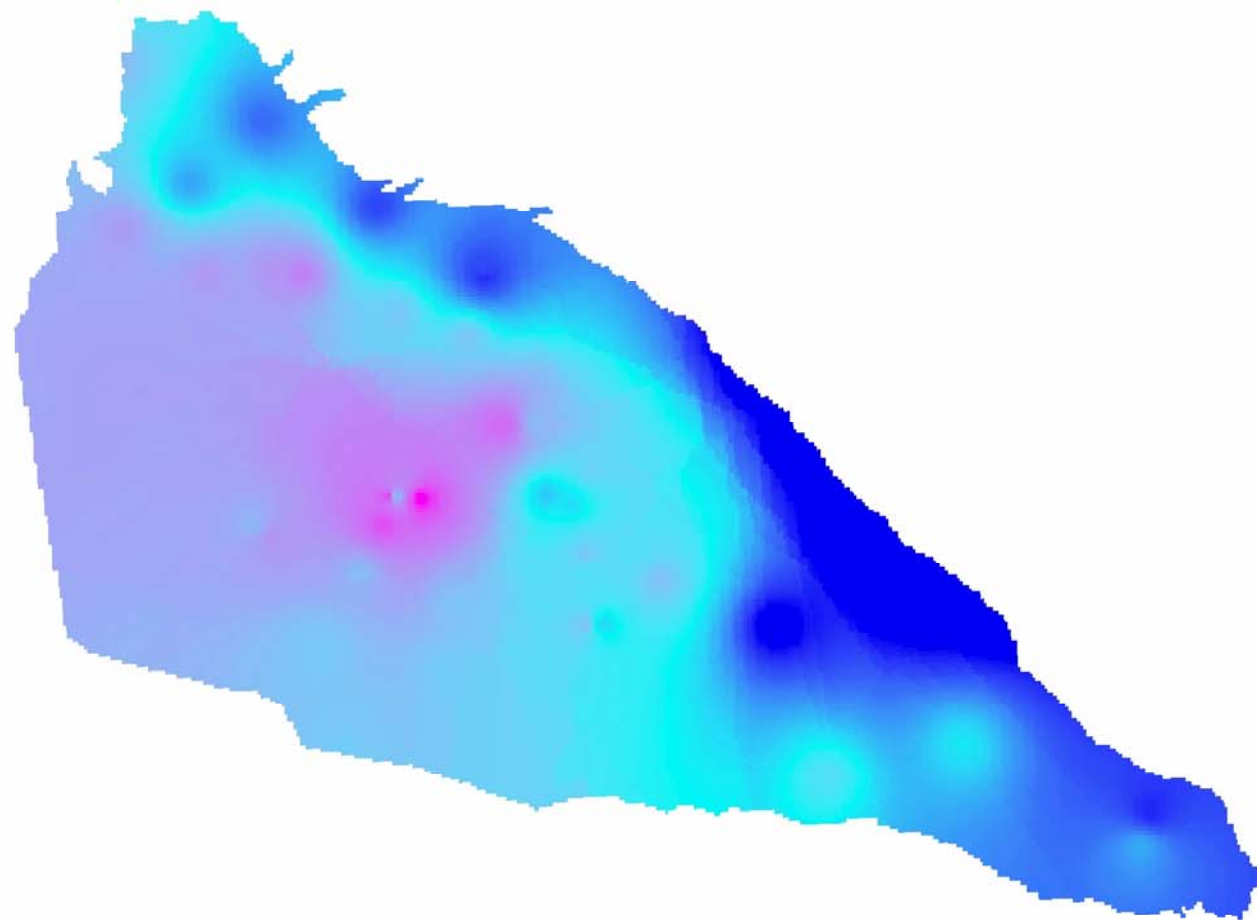
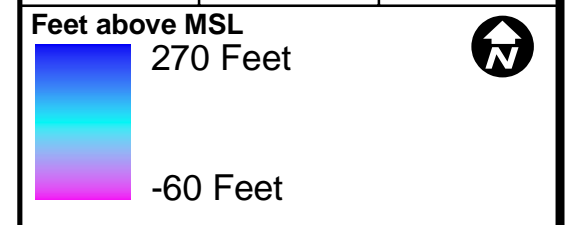


Figure 5
NMMA Groundwater Level 2000

CREATED BY: JPW3 REVISION 1 - 05/07 T:\WATER\WTR_Nipomol\Projects\2007 Analysis\WTR_NMMA-2000 - 05-22-06.mxd



Angle of view for
lower figure

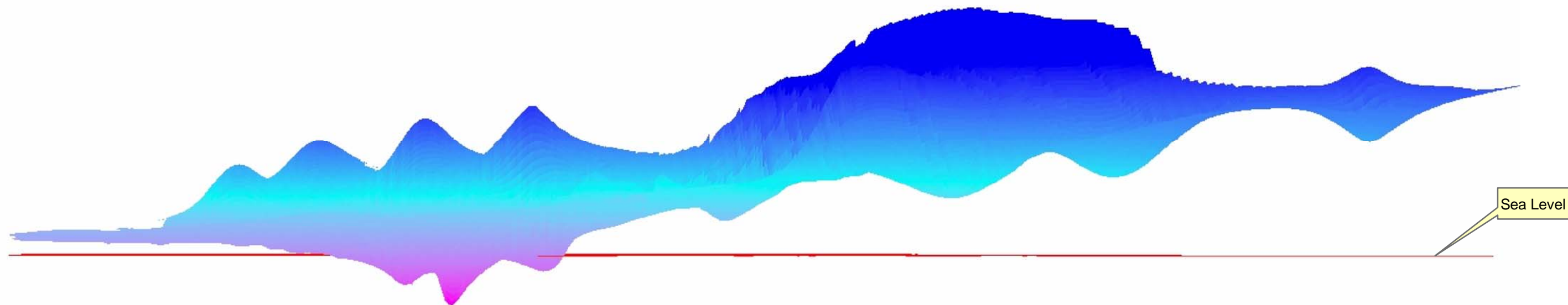
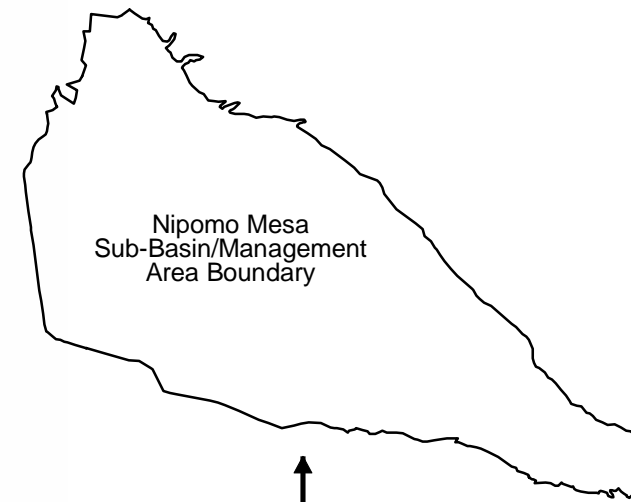
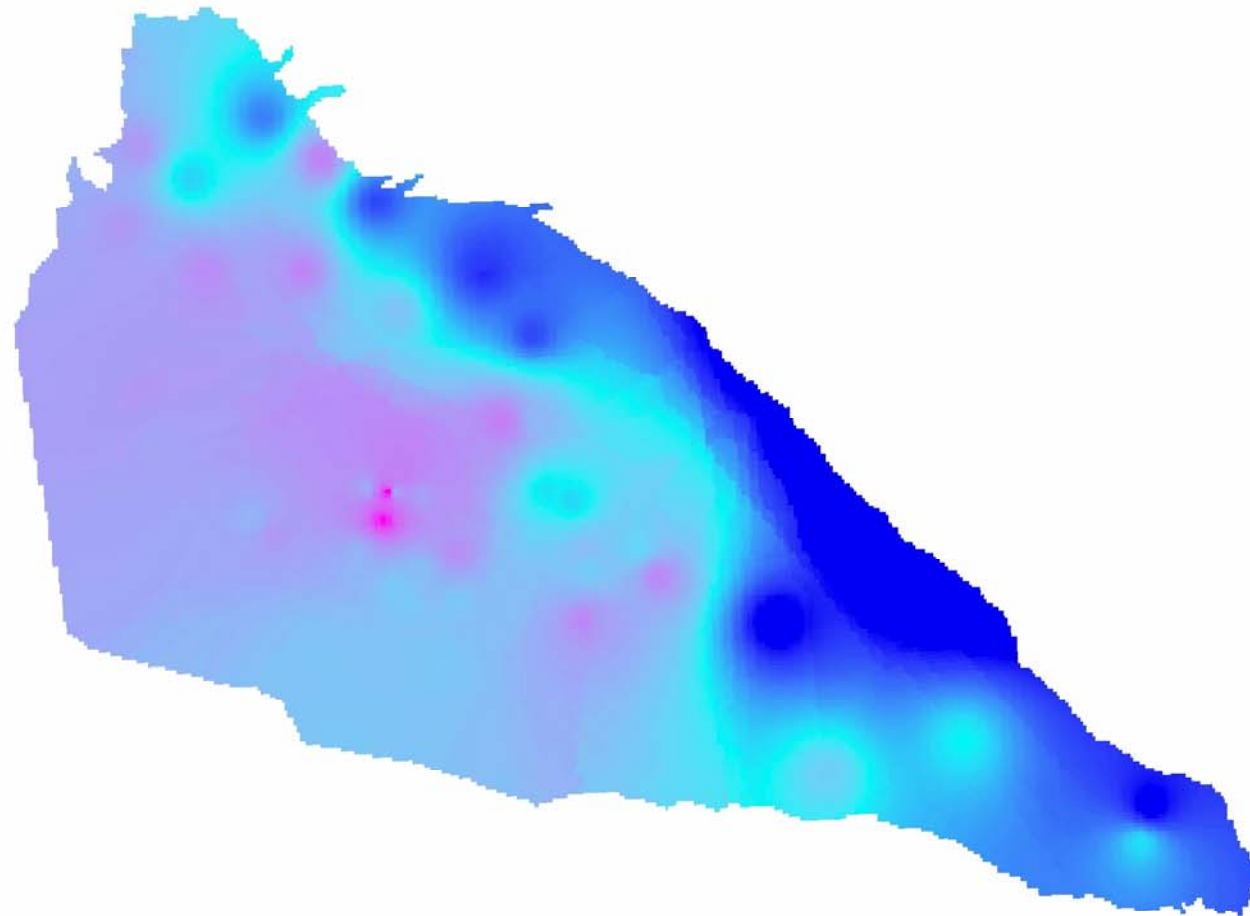
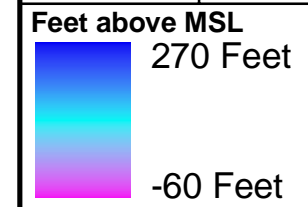


Figure 6
NMMA Groundwater Level 2006

CREATED BY: JPW3 REVISION 1 - 05/07 T:\WATER\WTR_NipomolProjects\2007 Analysis\WTR_NMMA-2006 - 05-22-06.mxd



↑
Angle of view for
lower figure

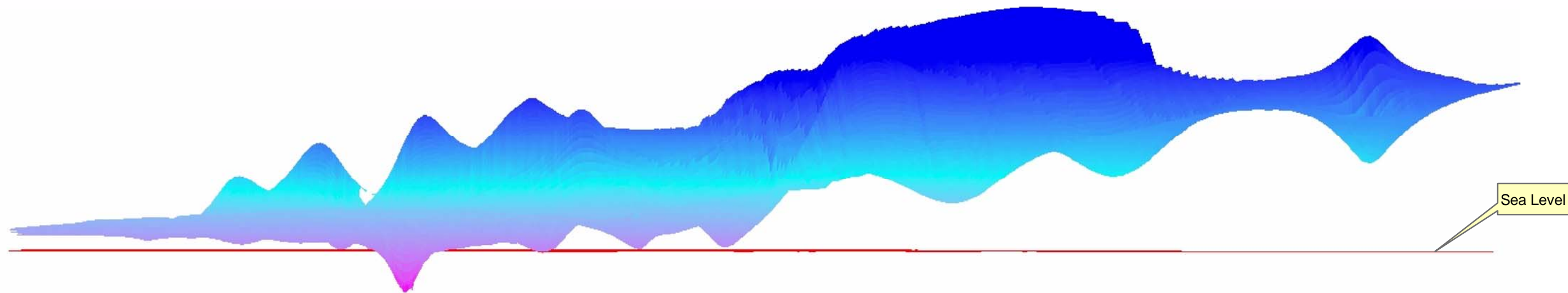
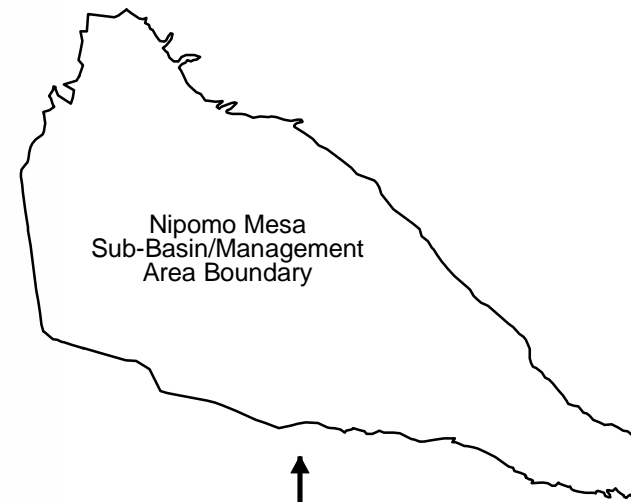
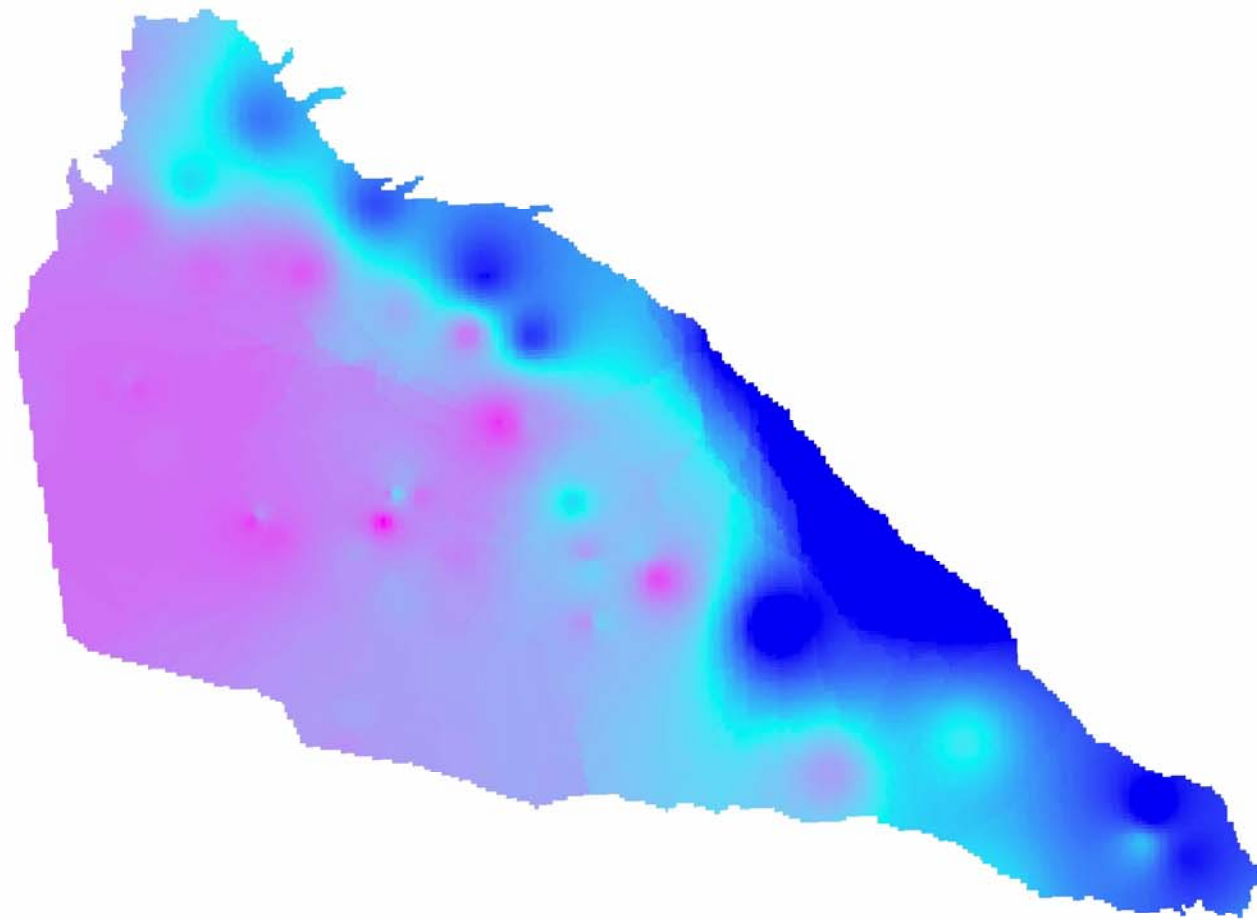
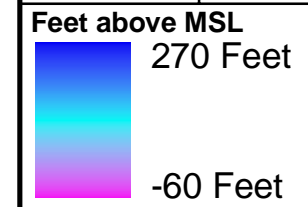
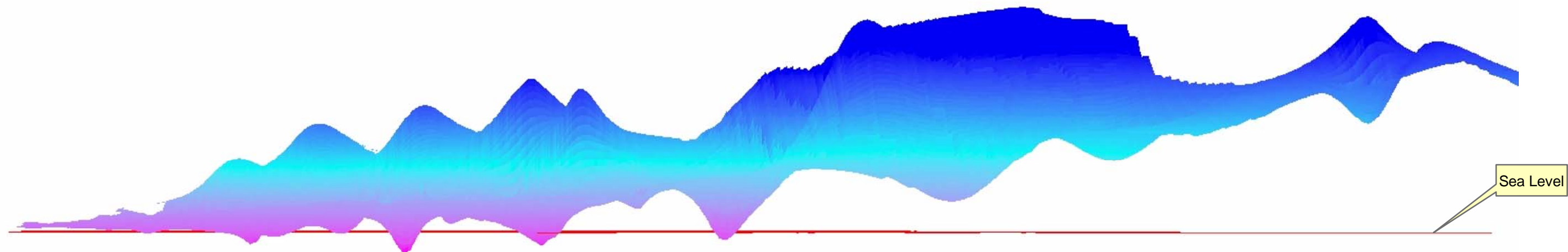


Figure 7
NMMA Groundwater Level 2007

CREATED BY: JPW3 REVISION 1 - 05/07 T:\WATER\WTR_Nipomo\Projects\2007 Analysis\WTR_NMMA-2007 - 05-22-06.mxd



Angle of view for
lower figure

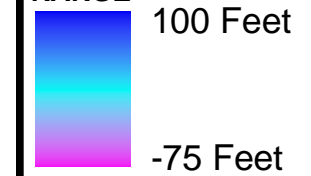


Sea Level

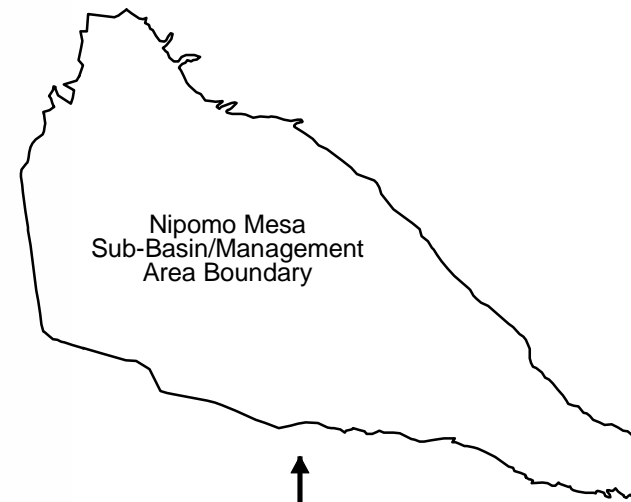
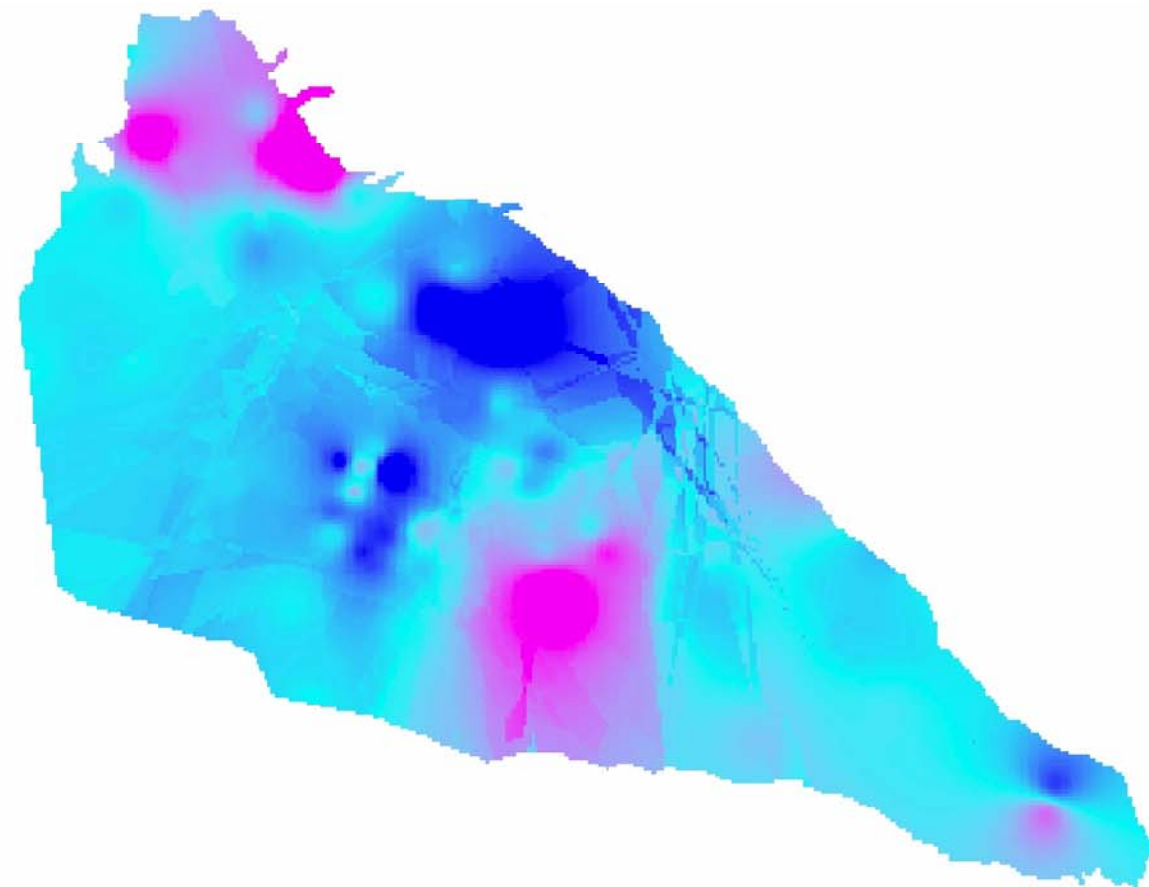
Figure 8
Change in Groundwater Level Surface from 2000 to 2006

CREATED BY: JPW3 REVISION 1 - 05/07 T:\WATER\WTR_Nipomo\Projects\2007_Analysis\WTR_NMMA-2006 minus 2000 - 05-22-06.mxd

RANGE



NOTE: Change in groundwater level surface; calculated by subtracting 2000 groundwater surface elevations from 2006 groundwater surface elevations



↑
Angle of view for lower figure

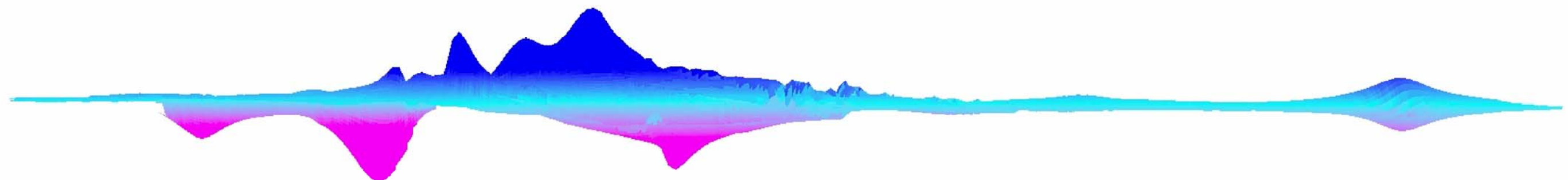
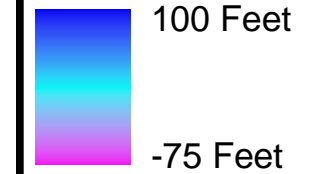


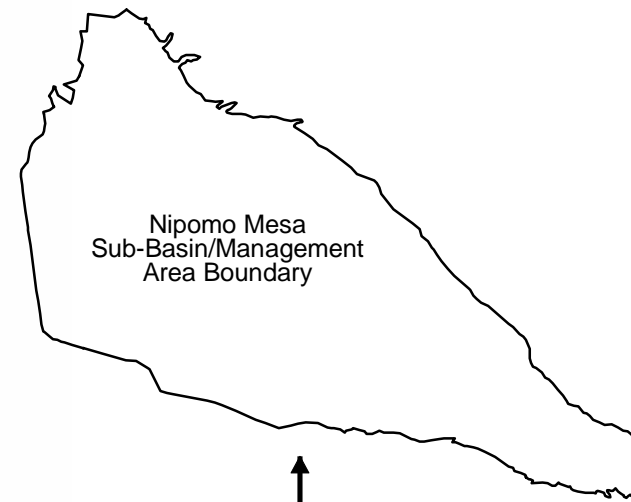
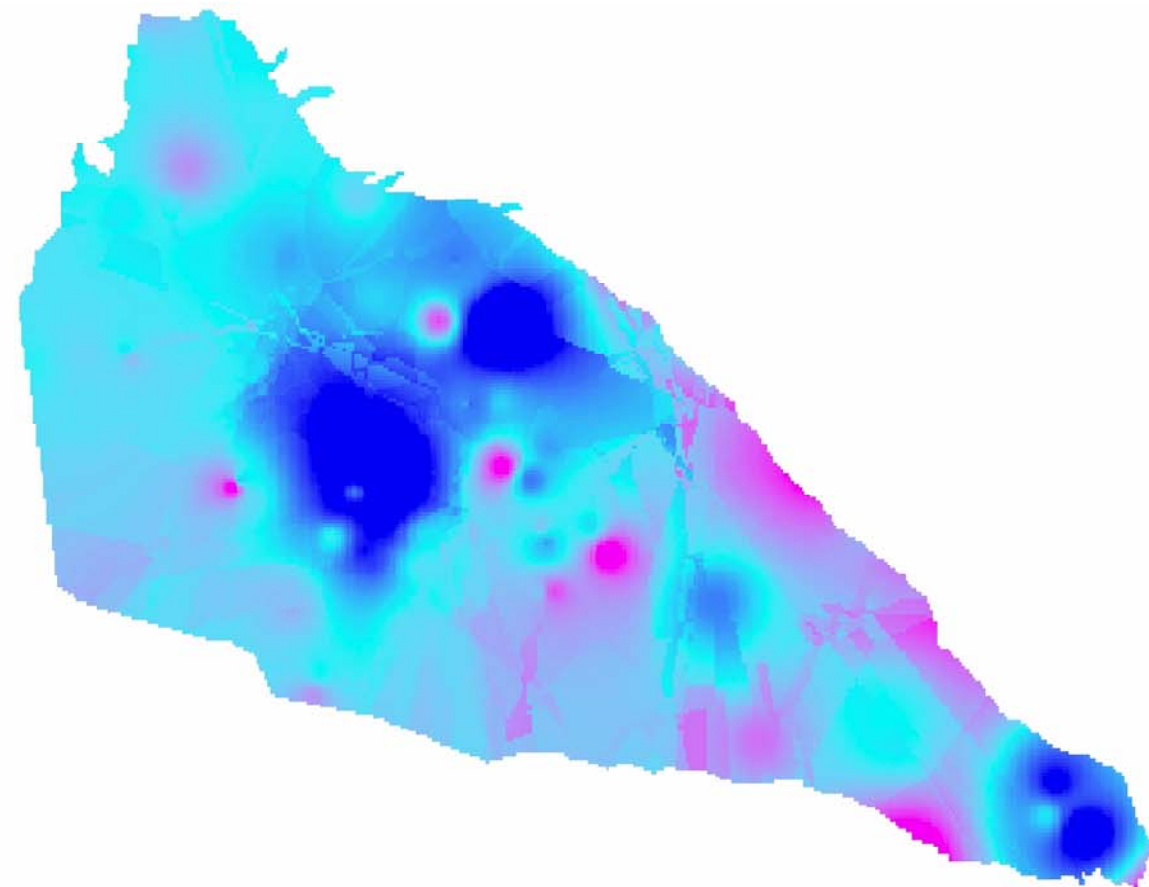
Figure 9
Change in Groundwater Level
Surface from 2000 to 2007

CREATED BY: JPW3 REVISION 1 - 05/07 T:\WATER\WTR_Nipomo\Projects\2007 Analysis\WTR_NMMA-2007 minus 2000 - 05-22-06.mxd

RANGE



NOTE: Change in groundwater level surface; calculated by subtracting 2000 groundwater surface elevations from 2007 groundwater surface elevations



↑
Angle of view for
lower figure

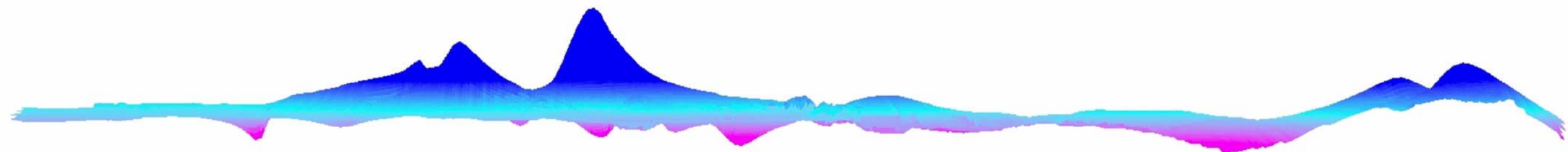
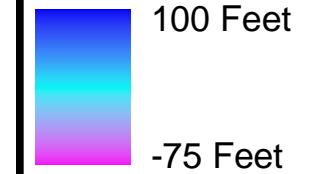


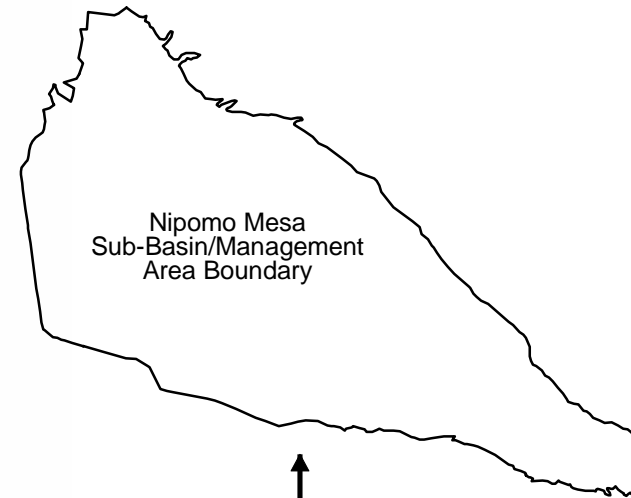
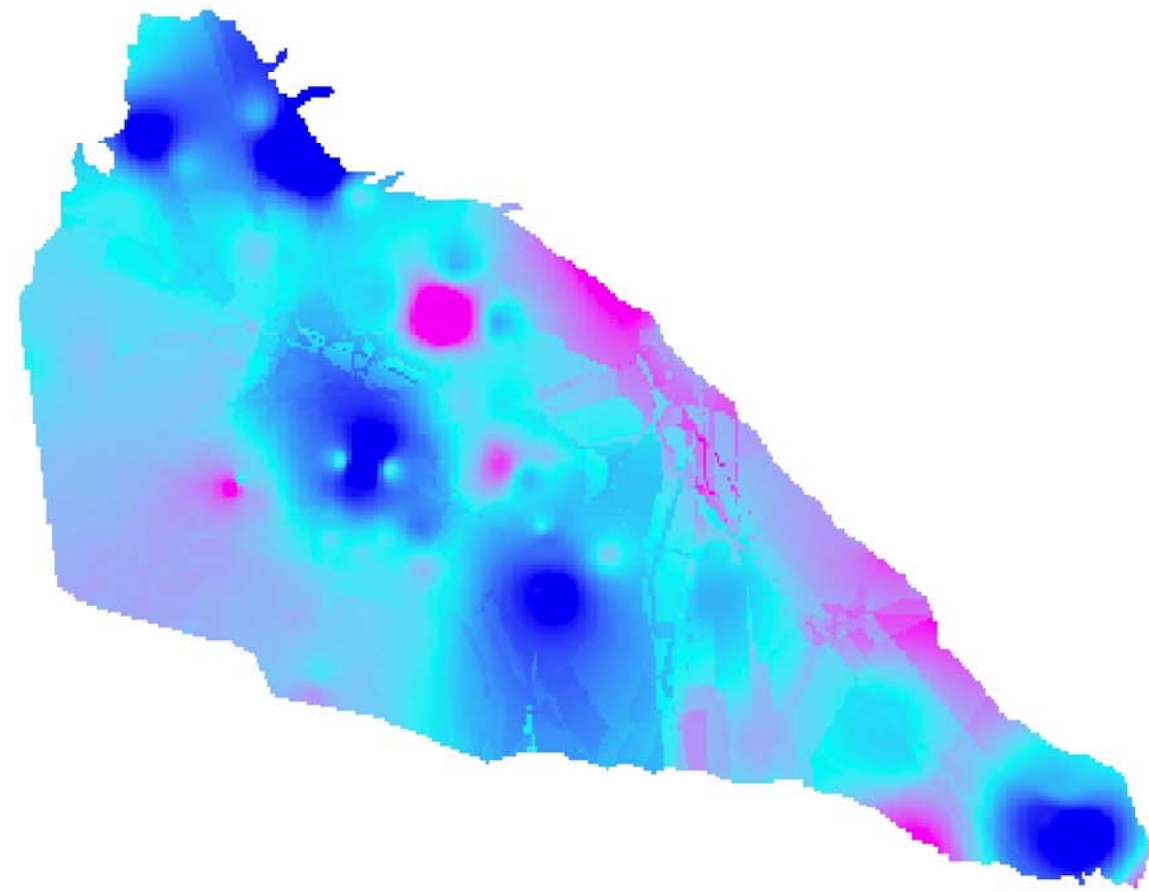
Figure 10
Change in Groundwater Level
Surface from 2006 to 2007

CREATED BY: JPW3 REVISION 1 - 05/07 T:\WATER\WTR_Nipomo\Project\2007 Analysis\WTR_NMMA-2007 minus 2006 - 05-22-06.mxd

RANGE



NOTE: Change in groundwater level surface; calculated by subtracting 2006 groundwater surface elevations from 2007 groundwater surface elevations



Nipomo Mesa
Sub-Basin/Management
Area Boundary



Angle of view for
lower figure

