

State Water and County Planning Efforts

Oceano CSD

October 28, 2009



Courtney Howard, P.E.
San Luis Obispo County
Public Works Department

Presentation

- State Water Project (SWP)
 - Overview
 - Drought Buffer
- Water Management Efforts
- County-wide Master Water Plan
- Integrated Regional Water Management
 - Regional Plan
 - Grant Opportunities

What is the SWP?

- Conveys water from Northern California watersheds to agriculture areas and urban regions throughout the state
 - CA Department of Water Resources (DWR)
 - State Water Project Analysis Office (SWPAO) evaluates supply and storage
 - State Water Contractors (SWC)

When did the District Join the SWP?

- August 3, 1962 Master Water Supply Agreement with DWR
- Individual agencies within the District signed up for State Water in '92 and '93
- State Water was first delivered to our County in July 1997

How much water does the District get from the SWP?

- Table A Allocation (Capacity to Devil's Den (DD))
 - 25,000 AFY Total
- Water Service Amount (Contracted Capacity after DD)
 - 4,830 AFY
- Drought Buffer
 - 3,657 AFY
- Excess Allocation
 - 16,513 AFY
- Projected Allocation (Delivery Percentage)
 - Currently at 40% of Table A Allocations/Water Service Amounts

Who
subcontracts
with the
District for
State Water?

Subcontractor	Water Service Amount	Drought Buffer	Total Reserved
<u>Chorro Valley Turnout</u>			
City of Morro Bay	1,313	2,290	3,603
Ca Mens Colony	400	400	800
Co Operations Center	425	425	850
Cuesta College	200	200	400
<u>Lopez Turnout</u>			
City of Pismo Beach	1,240	0	1,240
Oceano CSD	750	0	750
San Miguelito MWC	275	275	550
Avila Beach CSD	100	0	100
Avila Valley MWC	20	60	80
San Luis Coastal USD	7	7	14
Shandon	100	0	100
TOTAL	4,830	3,657	8,487

How does Drought Buffer work?

- Example - Desire 100% reliability at a 50% or greater projected allocation
 - Subcontractor Allocation = 750 AFY
 - Drought Buffer Required = 750 AFY
 - $750 \text{ AFY} * 50\% + 750 \text{ AFY} * 50\% = 750 \text{ AFY}$
- Drought Buffer Agreement
 - Pay annual DWR fixed costs for that quantity

State Water Cost

- What is the cost to deliver 750 AFY of State Water with 750 AFY of Drought Buffer to Oceano CSD?
 - Fixed Costs = $\$850 * 750 \text{ AFY} = \$637,500$
 - Variable Costs = $\$250$ per AF delivered
 - Drought Buffer Costs = $\$75 * 750 \text{ AFY} = \$56,250/\text{year}$
 - Wheeling Costs = $\$23$ per AF delivered

Water Management Efforts

State Water

- Short term agreement to utilize more than contracted capacity
- Long term agreement for use of excess allocation and pipeline capacity

Seawater Intrusion Monitoring

Water Management Efforts

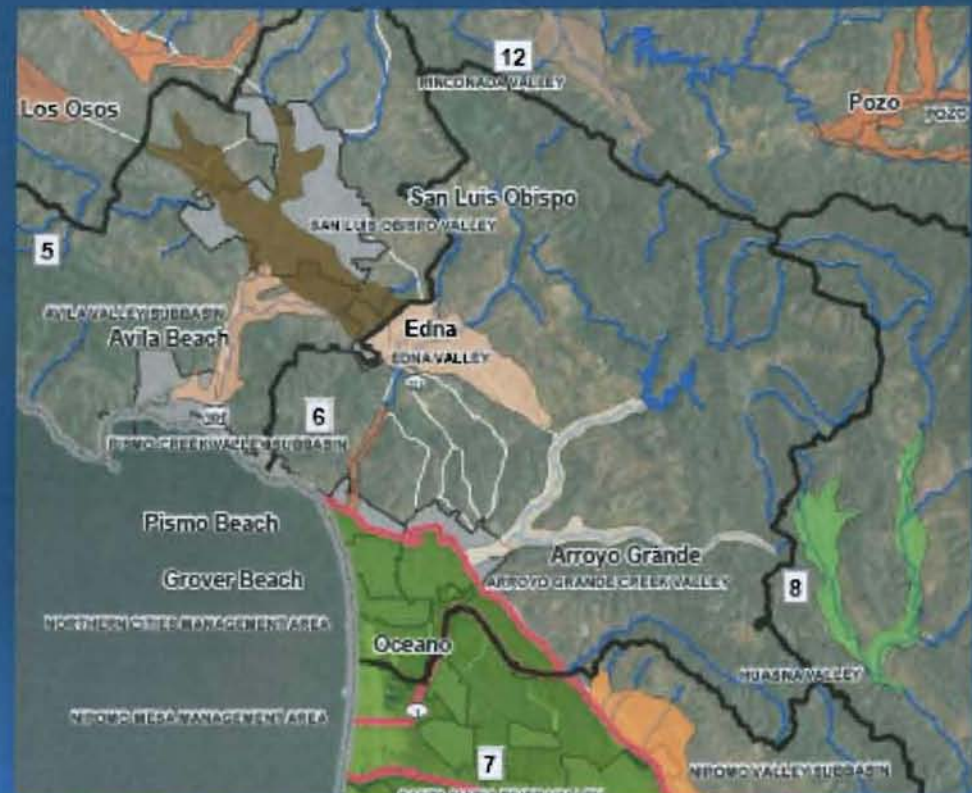
- Conservation
- Recycled Water
- Desalination

Master Water Plan

- Description of Water Resources Management in the County
- Analysis of Supply and Demand Now and into the Future
- Identification of Sustainable Water Resource Policies, Strategies and Projects

Northern Cities Planning Area

- Supply
 - State/Lopez Water
 - Santa Maria GWB
- Water Users
 - City of Pismo Beach
 - City of Arroyo Grande
 - City of Grover Beach
 - Oceano CSD
 - Agriculture and other overlying users
- Issues: Limited GW Supplies, Current Demands



Integrated Regional Water Management Plan

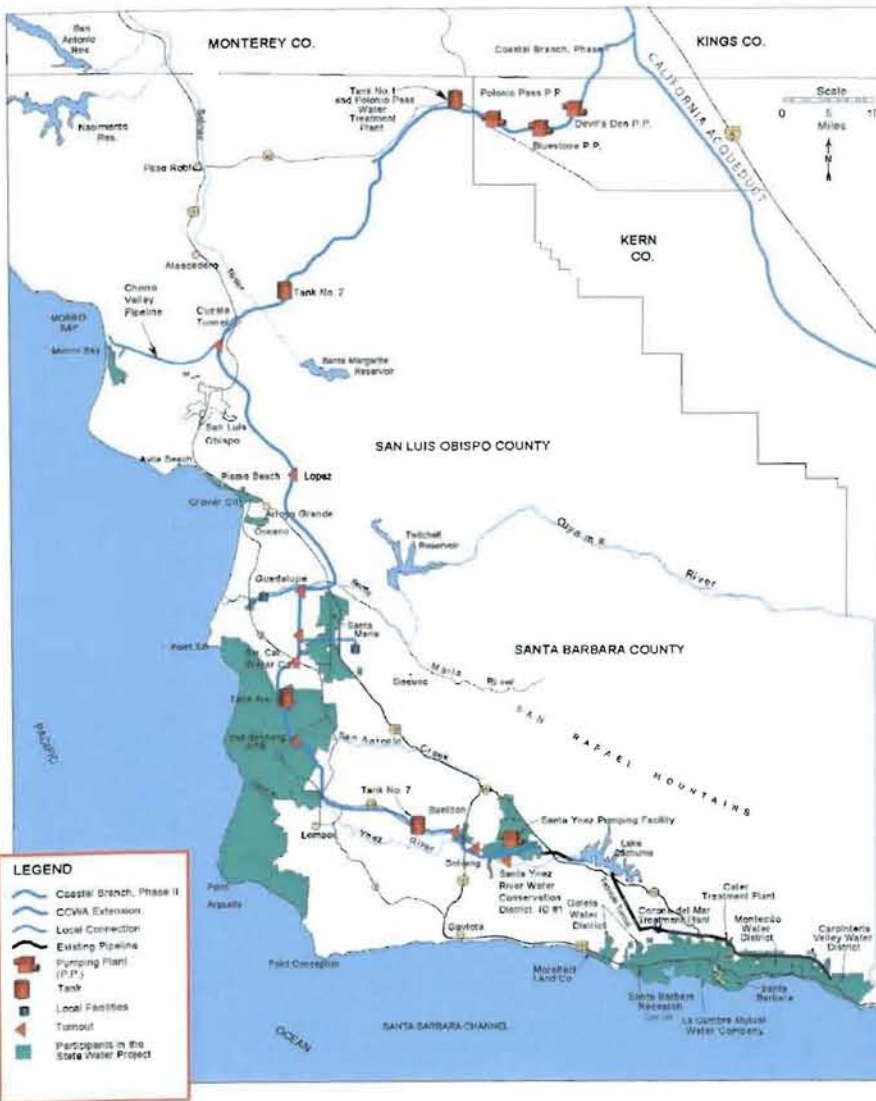
- 2007 Plan:
 - Zone 1/1A Waterway Management Program
- 2010 Plan:
 - NCMA Efforts
- Grant Opportunities



Community Input

- Master Water Plan
 - Water Supply and Demand Description
 - Supply Issues to Address
- Integrated Regional Water Management
 - Water Quality, Groundwater, Flood Control and Ecosystem Issues to Address

www.SLOCountyWater.org



Questions?

choward@co.slo.ca.us

www.SLOCountyWater.org